

# Winter SALE

JAN 2024

55% OFF UP TO 55% OFF OFF UP TO 55% OFF

2 FOR £52

SAVE  
13%

## Kinross Padded Shirt - JB200

Colours: Red, Blue & Green

Size: M 40" L 42" XL 44"

2XL 46/48" 3XL 48/50" 4XL 50/52"

\*Buy 1 for £30 EACH or

**Buy 2 for £26 EACH!**

RED

BLUE

GREEN

Padded  
Lining

**Jolliman**  
FAMILY RUN SINCE 1946

visit [www.jolliman.co.uk](http://www.jolliman.co.uk)  
or call 0303 031 0310

# Take advantage of our Money-saving Multi-buy Offers!

This offer also allows you to  
**Mix & Match Colours** and even  
other Styles wherever you see  
the below logo!

## MIX & MATCH

**Mix and Match** lets you choose  
different colours of the same product  
when there's a multi-buy offer.  
*Just pick the colours you like!*

**Only £7**  
Per Trouser

**SUPERIOR™  
CREASE**

*Through our precise in-house  
process, we ensure trousers  
maintain sharp, long-lasting  
creases for a polished,  
professional look.*

- Saves time and stress with your ironing
- Smart each and every time after washing
- Affordable one off payment
- Travel and weatherproof crease
- Environmentally safe
- Can be applied to most materials

***Last the lifetime of the garment!***

**MEDIA CODE: M266**



**WAIST  
SIZE**

UP TO  
**60"**

**NAVY**

**GREY**

**CAMEL**

**SUPERIOR  
CREASE**

**Only £7**  
Per Trouser

**MIX &  
MATCH**  
ANY 2  
COLOURS

**2 FOR £46**

**SAVE\***  
**8%**

## EXPANDING « WAIST » TECHNOLOGY

### Cavalry Twill Expanding Waist Trouser - JA02

Cavalry Twill is quality tailoring with a classic style. 2 side pockets and a single buttoned back pocket. Belt loops for belts up to 1½" wide. Machine washable. 100% Polyester. Colours: **Navy, Grey & Camel**  
Waist: 32" 34" 36" 38" 40" 42" 44"  
46" 48" 50" 52" 54" 56" 58" 60"  
Leg: Extra Short (27") Short (29") Regular (31")

**\*Buy 1 for £25 EACH or Buy 2 for £23 EACH!**



WAS £65

SAVE\*  
**23%**

## MENS PREMIUM PARTYWEAR!

### Tweed Wool Check Blazer - JC201

Elevate your style with our Premium Country Check Tweed Blazer, expertly crafted to blend classic sophistication with modern flair. The rich, textured tweed fabric exudes timeless charm, while the intricate country check pattern adds heritage-inspired elegance. Perfect for formal or casual occasions, this versatile blazer offers refinement and sartorial excellence. Discover timeless style with our Premium Country Check Tweed Blazer. 35% Wool | 65% Polycotton.

Colour: **Navy**

Size: M 40" - L 42" XL 44" - 2XL 46"

**\*Was £65 NOW ONLY £50 Save 23%**

**JACKET COVER  
INCLUDED**



#### PATTERNED INNER LINING



SIZES

UP TO  
**2XL**

CALL to order 0303 031 0310

3

ONLINE orders [www.jolliman.co.uk](http://www.jolliman.co.uk)

SAVE\*  
**50%**

## FORMAL WEAR AT LOW PRICES

*You won't find this on the High Street!*



GREY

### Luxury Suit Jacket - JC138

This Luxury Jacket is a versatile, stylish addition to our collection. Its classic silhouette flatters all body types, while high-quality fabric ensures comfort and durability. Ideal for formal events or smart-casual outings. Elegance meets practicality and is perfect for the modern gentleman. Match with trousers or cords for a sophisticated look.

**Please note: This is not a suit, it's a jacket only.**

Colours: **Grey & Black**

Jacket Size: 38" 40" 42" 44" 46" 48" 50" 52" 54" 56"

Length: Short, Regular or Long

**\*Was £60 NOW ONLY £30 Save 50%**



WAS £60  
now  
£30

BLACK

*Quality Tailoring!*



BUTTONED CUFFS



TWO SIDE POCKETS

CALL to order 0303 031 0310

4

ONLINE orders [www.jolliman.co.uk](http://www.jolliman.co.uk)



# GREAT OFFERS ON EXPANDING WAIST TROUSERS

The More You Buy, The More **You Save!**



**1**

**2 FOR £46**  
**SAVE\***  
**8%**

**MIX & MATCH**  
ANY 2 COLOURS

**SUPERIOR CREASE**

CHARCOAL  
BLACK  
BROWN

**Only £7**  
Per Trousers

*Adds permanent creases to trousers.*



**2**

**2 FOR £50**  
**SAVE\***  
**7%**

**MIX & MATCH**  
ANY 2 COLOURS

**SUPERIOR CREASE**

**Only £7**  
Per Trousers

**WAIST SIZE**  
UP TO **60"**

NAVY  
GREY  
BLACK



## 1. Jolliman Classic Trousers - JA65

Single leg with 4" self adjusting waist. Button fastening and zip fly. 2 slanted side and 2 button back pockets. Soft touch fabric. Belt loops for belts up to 1½". 100% Polyester.

Colours: **Charcoal, Black & Brown**

Waist: 32", 34", 36", 38", 40", 42",

44", 46", 48", 50", 52", 54", 56", 58", 60"

Leg: Extra short (27") Short (29") Regular (31")

**\*Buy 1 for £25 EACH or Buy 2 for £23 EACH!**



## 2. Wonder Waist Trousers - JA26

Discreet Active stretch waist. Single pleat front French bearer and button fastening with zip fly. 2 slanted side pockets and buttoned back pocket. Machine washable. 65% Polyester | 35% Viscose.

Colours: **Navy, Grey & Black**

Waist: 32", 34", 36", 40", 42", 44", 46", 48",

50", 52", 54", 56", 58", 60"

Leg: Extra Short (27") Short (29") Regular (31")

**\*Buy 1 for £27 EACH or Buy 2 for £25 EACH!**

CALL to order 0303 031 0310

5

ONLINE orders [www.jolliman.co.uk](http://www.jolliman.co.uk)



FAWN

OLIVE

WINE

NAVY

BROWN



1



98% COTTON  
BLEND

WAS £35

SAVE\*  
**17%**

WAIST  
SIZE

UPTO  
**60"**

**<< EXPANDING WAIST >>**  
TECHNOLOGY



## 1. Classic Expanding Waist Lincoln Cords - JA71

High-waist, flat-front corded trousers offer style and practicality. Featuring an expanding waist, eight-wale cord, button and bar fastening, two jetted pockets, a buttoned back pocket, soft-touch fabric and belt loops. 98% Cotton | 2% Elastane.

Colours: **Fawn, Olive, Wine, Navy & Brown**

Waist: 32" 34" 36" 38" 40" 42" 44" 46"

48" 50" 52" 54" 56" 58" 60"

Leg: Extra Short (27") Short (29") Regular (31")

**\*Was £35 NOW ONLY £29 Save 17%**

## 2. 100% Cotton Tattersall Long Sleeve Shirt - JB18

Our classic Tattersalls are renowned for timeless British style, generous cut, and superb tailoring. Perfect for casual wear or with a tie, they feature a brushed interior for added comfort, straight hem, two chest pockets, mock horn buttons, and two-button cuffs. 100% Pure Cotton.

Colours: **Blue, Red & Green**

Size: M 40" L 42" XL 44" 2XL 46/48" 3XL 50/52"

**\*Buy 1 for £20 EACH or Buy 2 for £18 EACH!**

Champion.



FLAP  
POCKETS



100%  
COTTON

2 FOR £36

SAVE\*  
**10%**

2



**MIX & MATCH** ANY 2 COLOURS



BLUE



RED



GREEN

CALL to order 0303 031 0310

6

ONLINE orders [www.jolliman.co.uk](http://www.jolliman.co.uk)



Champion.

2 FOR £34

SAVE\*  
15%



1



**MIX&MATCH ANY 2 COLOURS**



GREEN



RED



BLUE

## 1. Kilbeggan Shirt - JB78

Every wardrobe needs a warm checked shirt for those cooler days! Soft and breathable 100% yarn dyed flannel. Brushed on the inside for extra comfort. Two chest pockets with flap, button fastening and 2 button cuff. Straight hem. 100% Cotton.

Colours: **Green, Red & Blue**

Size: M 40" L 42" XL 44" 2XL 46/48"

3XL 48/50" 4XL 50/52"

**\*Buy 1 for £20 EACH or Buy 2 for £17 EACH!**

## 2. Quality Plus Trousers - JA01

A wardrobe essential, ideal for any occasion. Featuring a classic fit, easy-care fabric, and practical details like belt loops and multiple pockets. Machine washable. 100% Polyester.

Colours: **Grey, Navy, Fawn, Black & Brown**

Waist: 32", 34", 36", 38", 40", 42", 44",

46", 48", 50", 52", 54", 56", 58", 60"

Leg: Extra short (27") Short (29") Regular (31") Long (33")

**\*Buy 1 for £19 EACH or Buy 2 for £16 EACH!**

**MIX&MATCH ANY 2 COLOURS**



GREY



NAVY



FAWN



BLACK



BROWN

2



2 FOR £32

SAVE\*  
15%

WAIST  
SIZE

UP TO  
**60"**

LEG SIZE  
UP TO  
**33"**

**SUPERIOR™  
CREASE**

Adds permanent  
creases to trousers.

**Only £7**  
Per Trouser

CALL to order 0303 031 0310

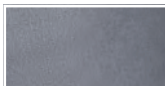
7

ONLINE orders [www.jolliman.co.uk](http://www.jolliman.co.uk)

## MIX & MATCH ANY 2 COLOURS



NAVY



GREY



BLACK



TEFLON-TREATED  
FABRIC

1

SUPERIOR  
CREASE

Only £7  
Per Trousers

2 FOR £46

SAVE\*  
8%

WAIST  
SIZE

UP TO  
60"

LEG SIZE  
UP TO  
33"

« EXPANDING WAIST »  
TECHNOLOGY



## 1. Active Stretch Waist Trousers - JA115

Teflon-treated fabric for stain resistance, 4" self-adjusting waist, single pleat front, 2 side pockets, 1 buttoned back pocket, belt loops for belts up to 1 1/2". Zip fly and button fastening.

Colours: **Navy, Grey & Black**

Waist: 32", 34", 36", 38", 40", 42",

44", 46", 48", 50", 52", 54", 56", 58", 60"

Leg: Extra short (27") Short (29") Regular (31") Long (33")

\*Buy 1 for £25 EACH or **Buy 2 for £23 EACH!**

## 2. York Long Sleeve Shirt - JB108

This stylish check shirt, with its exquisite colour scheme, complements casual, vintage, and business outfits. The brushed lining offers wind protection and extra snugness. It features a single chest pocket, straight hem, and two-button cuffs. 65% polyester 35% cotton yarn dyed flannel.

Colours: **Wine & Brown**

Size: M 40" L 42" XL 44" 2XL 46/48" 3XL 50/52" 4XL 54/56"

\*Buy 1 for £19 EACH or **Buy 2 for £17.50 EACH!**

2 FOR £35

SAVE\*  
7%

Champion.



CHEST  
POCKET

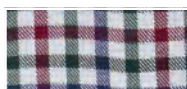


BRUSHED  
LINING

2



## MIX & MATCH ANY 2 COLOURS



WINE



BROWN

CALL to order 0303 031 0310

8

ONLINE orders [www.jolliman.co.uk](http://www.jolliman.co.uk)



Champion.

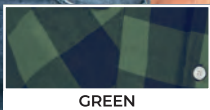


WAS £24

SAVE\*  
**12%**



BLUE



GREEN

### 1. Arran Long Sleeve Checked Shirt - JB279

This stylish casual shirt, made from 100% yarn-dyed cotton flannel, keeps you warm on cooler days. It features two large buttoned breast pockets, a straight hem, and two-button cuffs. Pair it with Jolliman cords or jeans for a great look.

65% Polyester | 35% Cotton.

Colours: **Blue & Green**

Size: M 40" L 42/44" XL 46" 2XL 48" 3XL 50/52" 4XL 54"

**\*Was £24 NOW ONLY £21 Save 12%**

### 2. Cavalry Twill Expanding Waist Trousers - JA02

Cavalry Twill is quality tailoring with a classic style, 2 side pockets and a single buttoned back pocket. Belt loops for belts up to 1½" wide. Machine washable.

100% Polyester. Colours: **Navy, Grey & Camel**

Waist: 32" 34" 36" 38" 40" 42" 44"

46" 48" 50" 52" 54" 56" 58" 60"

Leg: Extra Short (27") Short (29") Regular (31")

**\*Buy 1 for £25 EACH or Buy 2 for £23 EACH!**

**EXPANDING WAIST**  
TECHNOLOGY



2 FOR £46

SAVE\*  
**8%**

WAIST  
SIZE

UP TO  
**60"**

SUPERIOR  
**CREASE**

Only **£7**  
Per Trousers

**MIX & MATCH ANY 2 COLOURS**



NAVY



GREY



CAMEL

CALL to order 0303 031 0310

9

ONLINE orders [www.jolliman.co.uk](http://www.jolliman.co.uk)

2 FOR £38

SAVE\*  
9%



SOFT  
TOUCH



FRONT  
POCKETS

1

## 1. Soft Touch Cable Knit V Neck Jumper - JF164

This timeless cable-knit V-neck jumper is perfect for layering over shirts, whether for a smart or casual look. It features cosy ribbing on the hem, cuffs, and neckline for added comfort. 100% Soft Acrylic.

Colours: **Blue, Wine & Taupe**

Size: M 40" L 42" XL 44" 2XL 46" 3XL 48"

**\*Buy 1 for £21 EACH or Buy 2 for £19 EACH!**

## 2. Soft Touch Cable Knit Cardigan - JF165

Stay warm and cosy this winter with this vintage-style V-front cable knit cardigan. Featuring five easy fasten buttons, two front patch pockets, and ribbed neck, sleeves, and hem, it's a must-have for the colder months. 100% Soft Acrylic.

Colours: **Blue, Wine & Taupe**

Size: M 40" L 42" XL 44" 2XL 46"

**\*Buy 1 for £21 EACH or Buy 2 for £19 EACH!**

**MIX & MATCH**  
ANY 2 ITEMS  
WITH THE SAME  
MULTI-BUY SAVING!

2

2 FOR £38

SAVE\*  
9%



UK  
MADE



*Soft Touch!*

**MIX & MATCH** ANY 2 COLOURS



BLUE



WINE



TAUPE



**MIX & MATCH** ANY 2 COLOURS



BLUE



WINE



TAUPE

CALL to order 0303 031 0310

10

ONLINE orders [www.jolliman.co.uk](http://www.jolliman.co.uk)



2 FOR £60

SAVE\*  
9%



SOFT  
TOUCH

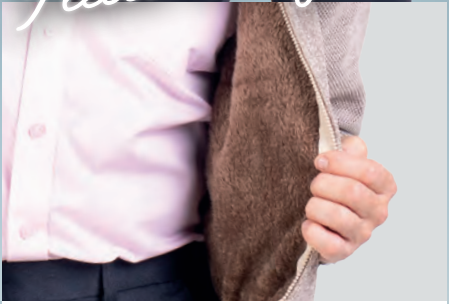


FRONT  
POCKETS

1



*Fleece lining!*



**MIX&MATCH** ANY 2 COLOURS



GREY



BEIGE



BROWN

## 1. Chenille Fleece Lined Full Zip Cardigan - JF176

This ever popular cardigan is both practical and stylish and sure to keep you warm and snug through the cold months ahead. It comes with a striking vertical design front, soft faux fur lining, full zip fastening and lined pockets.

100% Polyester. Colours: **Grey, Beige & Brown**  
Size: M 38/40" L 42/44" XL 44/46" 2XL 46/48"

**\*Buy 1 for £33 EACH or Buy 2 for £30 EACH!**

## 2. Full Zip Basic Cardigan - JF205

Featuring a full-zip closure for easy wear, this piece combines style and practicality. Two pockets offer space for essentials. The long sleeves provide added warmth. Crafted from soft fabric, its timeless design transitions effortlessly between casual and formal settings. 100% Acrylic. Colours: **Grey, Plum & Navy**  
Size: M 38/40" L 42/44" XL 44/46" 2XL 46/48"

**\*Buy 1 for £30 EACH or Buy 2 for £27 EACH!**



SOFT  
FABRIC



UK  
MADE

2



**MIX&MATCH** ANY 2 COLOURS



GREY



PLUM



NAVY

2 FOR £54

SAVE\*  
10%

CALL to order 0303 031 0310

11

ONLINE orders [www.jolliman.co.uk](http://www.jolliman.co.uk)

WAS £38

NOW\*

£36

## MENS KNITWEAR FOR LESS!

### Samuel Horizontal Striped Chenille Zipper - JF222

Embrace warmth and style with this chenille full-zip cardigan, crafted for ultimate comfort. The luxurious faux fur lining and high neck provide superior insulation, while a bold horizontal stripe across the chest lends a contemporary edge. Featuring two discreet waist pockets for practicality, this refined cardigan effortlessly transitions from casual evenings at home to brisk outdoor outings. 100% Polyester.

Colours: **Navy & Grey**

Size: M 40" L 42" XL 44" 2XL 46/48"

**\*Was £38 NOW ONLY £36 Save 5%**

NAVY

**FULL ZIP  
CLOSURE**

GREY

*Side Pockets!*

SIZES

UP TO  
**2XL**

*Fleece lining!*

CALL to order 0303 031 0310

12

ONLINE orders [www.jolliman.co.uk](http://www.jolliman.co.uk)



## Men's Poplin Long Sleeve Easy Iron Shirt - JB181

This classic shirt features a left breast pocket for conveniently storing small essentials like pens or glasses, while its stiffened collar maintains a polished look throughout the day, providing a sharp appearance. Adjustable cuffs offer a customisable fit and versatility, ensuring both comfort and style, complemented by a straight hem that provides a clean suitable for effortless tucking in or leaving out. Crafted from easy-care fabric, it resists wrinkles and maintains crispness. 65% Polyester | 35% Cotton Poplin.

Colours: **Black, Blue, White, Pink, Wine & Navy**  
Size: M 15" L16" XL 17" 2XL 18" 3XL 19" 4XL 19.5"

**\*Buy 1 for £20 EACH or  
Buy 2 for £17 EACH!**

*6 Colours!*



**MIX & MATCH**  
ANY 2 COLOURS



Also Available In  
**SHORT SLEEVE JB180**

**2 FOR £34**

**SAVE\*  
15%**

**SIZES**

**UP TO  
4XL**

**WHITE**



*Wrinkle Resistant!*

**CALL to order 0303 031 0310**

**13**

**ONLINE orders [www.jolliman.co.uk](http://www.jolliman.co.uk)**

# PREMIUM TROUSERS AT LOW PRICES!

Quality, Reliability, and Comfort You Can Feel!

1

WAIST  
SIZE

UP TO  
**48"**

**MIX &  
MATCH**  
ANY 2  
COLOURS

SUPERIOR  
CREASE

Only **£7**  
Per Trouser



BLACK



WINE



NAVY

2 FOR £65

SAVE\*  
**7%**



## 1. Premium 100% Cotton Needle Cords - JA121

A must for smart or casual occasions. Comfort expanding waist with elegant flat front styling. Zip fly, 2 side pockets, 1 buttoned back pocket and 1 ½" belt loops. Machine washable. 100% Cotton.

Colours: **Black, Wine & Navy**

Waist: 32", 34", 36", 38", 40", 42", 44", 46", 48"

Leg: Extra Short (27") Short (29") Regular (31")

\*Buy 1 for **£35 EACH** or **Buy 2 for £32.50 EACH!**

2

WAIST  
SIZE

UP TO  
**44"**

GREAT VALUE

ONLY  
**£35**



SOFT PEACH  
FINISH

*Luxury* | **STRETCH  
FABRIC**

## 2. Luxury Stretch Moleskin Trousers - JA186

Crafted from LUXURY moleskin stretch fabric, these trousers offer comfort, style, and durability. Featuring French bearer closure, deep side pockets, reinforced seams, and two button back pockets.

Colour: **Hunter Green**

Waist: 32" 34" 36" 38" 40" 42" 44"

Leg: Extra Short (27") Short (29") Regular (31")

**GREAT VALUE ONLY £35**

CALL to order 0303 031 0310

14

ONLINE orders [www.jolliman.co.uk](http://www.jolliman.co.uk)



Champion.

2 FOR £32

SAVE\*

15%



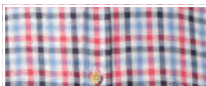
1



**MIX & MATCH** ANY 2 COLOURS



NAVY



RED

### 1. Lyndhurst Long Sleeve Shirt - JB190

Add flair to your casual wardrobe with the Lyndhurst Long Sleeve Shirt. Featuring a branded buttoned chest pocket, straight hem, and brushed fabric for extra warmth, it's perfect for colder days. Pair with jeans or chinos for a classic look.

65% polyester 35% cotton yarn dyed flannel.

Colours: **Navy & Red**

Size: M 40" L 42" XL 44" 2XL 46/48" 3XL 48/50"

**\*Buy 1 for £19 EACH or Buy 2 for £16 EACH!**

### 2. Thermal Wonderwaist Trouser - JA122

Expanding comfort waist. Thermal lined. Zip fly belt loops for belts up to 1.5 inches wide. 2 side pockets, 2 back buttoned pockets and flat front. 65% Polyester 35% Viscose. Colour: **Navy, Grey & Black**

Waist: 32", 34", 36", 38", 40", 42", 44", 46", 48", 50", 52", 54", 56", 58", 60"

Leg: Extra Short (27") Short (29") Regular (31")

**\*Buy 1 for £29 EACH or Buy 2 for £25 EACH!**

**« EXPANDING WAIST »**  
TECHNOLOGY

2



2 FOR £50

SAVE

£8\*

WAIST  
SIZE

UP TO  
60"

SUPERIOR  
CREASE

Only £7  
Per Trouser

**MIX & MATCH**  
ANY 2  
COLOURS



NAVY



GREY



BLACK

CALL to order 0303 031 0310

15

ONLINE orders [www.jolliman.co.uk](http://www.jolliman.co.uk)

# EXPANDING «WAIST» TECHNOLOGY



**SUPERIOR™  
CREASE**

Adds a  
permanent  
crease to  
trousers.

**Only £7**  
Per Trouser

*Premium  
Trousers  
for Less!*

**2 FOR £50**

**SAVE  
£6\***

**WAIST  
SIZE**

**UPTO  
60"**

**WAS £45**

**SAVE\*  
20%**

**WAIST  
SIZE**

**UPTO  
48"**

## 1. Easy Care Travel Trouser - JA69

Discreet 4" self-adjusting waistband for all-day comfort. Lightweight, easy-care fabric with 2 side pockets, 2 rear buttoned pockets, a coin pocket, French bearer, button fastening, and belt loops. 100% Polyester. Colours: **Grey, Beige & Sky**  
Waist: 34", 36", 38", 40", 42", 44", 46", 48", 50", 52", 54", 56", 58", 60"  
Leg: Extra Short (27") Short (29") Regular (31")

**\*Buy 1 for £28 EACH or Buy 2 for £25 EACH!**



GREY



BEIGE



SKY



SKY



MULBERRY



NAVY



STONE

## 2. Active Waist Cotton Chino - JA125

Now with our active stretch waist for all-day comfort. Featuring a zip fly, button fastening and belt loops. Two handy side pockets and two buttoned back pockets. 100% Cotton.

Colours: **Sky, Mulberry, Navy & Stone**

Waist: 32", 34", 36", 38", 40", 42", 44", 46", 48"  
Leg: Extra Short (27") Short (29") Regular (31")

**\*Was £45 NOW ONLY £36 Save 20%**

**CALL to order 0303 031 0310**

**16**

**ONLINE orders [www.jolliman.co.uk](http://www.jolliman.co.uk)**



GREY



GREAT VALUE

ONLY  
£45

SIZES

UP TO  
2XL

NAVY



BEIGE



## Highgrove Padded Jacket - JC181

Our Highgrove padded jacket features a water-resistant finish, a fully quilted lining for extra warmth and comfort, and a detachable hood with a drawstring. Additional features include a full zip and stud front fastening, two side pockets, two front stud patch pockets, and one inner pocket. 100% Polyester Outer with mixed fibre lining.

Colours: **Grey, Beige & Navy**

Size: M 40" L 42" XL 44" 2XL 46/48"

**GREAT VALUE ONLY £45**



FULL ZIP CLOSURE



MULTI-USE POCKETS

CALL to order 0303 031 0310

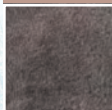
17

ONLINE orders [www.jolliman.co.uk](http://www.jolliman.co.uk)

Champion.

WAS £45

SAVE\*  
**17%**

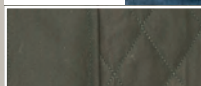


FLEECE  
INNER LINING

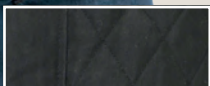
1



WATER  
RESISTANT



OLIVE



BLACK

**CORDUROY SHOULDER PATCHES**

### 1. Lewis Quilted Jacket - JC113

Full zip front and studded back vent. Corduroy shoulder patches. Fleece-lined inner for superb warmth with padding throughout. Multi-use pockets. 100% Polyester Microfibre.

Colours: **Olive & Black**

Size: M 42" L 44" XL 46/48" 2XL 50/52" 3XL 52/54"

**\*Was £45 NOW ONLY £37 Save 17%**

### 2. Windstorm Waterproof Padded Coat - JC163

This waterproof padded coat features a full fleece lining in the body and detachable hood for warmth and comfort. With a full zip, waist and hem drawstrings, taped seams, multiple pockets, and adjustable cuffs, it's practical and cosy.

100% Polyester. Colour: **Blue**

Size: S 38" M 40" L 42" XL 44/46" 2XL 48" 3XL 50" 4XL 52" 5XL 54"

**GREAT VALUE ONLY £65**

Champion.

GREAT VALUE

ONLY  
**£65**



WATER  
RESISTANT

2



MULTI  
POCKET

CALL to order 0303 031 0310

18

ONLINE orders [www.jolliman.co.uk](http://www.jolliman.co.uk)





WATER  
RESISTANT

GREAT VALUE

ONLY  
£55

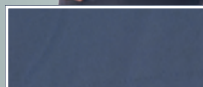


ZIPPERED  
POCKETS

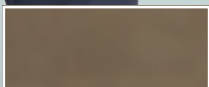
WAS £45

SAVE\*  
6%

1



NAVY



OLIVE

DETACHABLE HOOD

### 1. Balmoral Padded Outdoor Jacket - JC139

The Ultimate Outdoor Jacket with detachable lined hood The Balmoral Jacket is totally waterproof and windproof with intelligent features such as padded lining, taped seams and a double zip. Ideal for that casual walk or the occasional ramble.

100% Breathable Polyester. Colours: **Navy & Olive**

Size: M 40", L 42", XL 44", 2XL 46", 3XL 48"

**GREAT VALUE ONLY £55**

### 2. Stephen Padded Waterproof Jacket - JC206

Get prepared for the elements with this fleece-lined jacket featuring a detachable hood, high neck, and showerproof design. With 3 external zip pockets, reinforced waist pockets, and 1 internal pocket, it combines practicality with modern protection.

100% Polyester. Colour: **Black**

M 42" L 44" XL 46/48" 2XL 50/52" 3XL 52/54"

\*Was £45 **NOW ONLY £42 Save 6%**

2



WATER  
RESISTANT



WAS £33

SAVE\*  
9%



### 1. Norfolk Fleece Lined Jacquard Zipper - JF221

Stay warm in style with this heavyweight full-zip cardigan. Fleece lined ensures comfort, while a high neck offers extra protection. Featuring a bold horizontal pattern across the chest and two convenient waist pockets for functionality and flair. 100% Polyester.

Colours: **Wine & Charcoal**

Size: M 40", L 42", XL 44", 2XL 46"

**\*Was £33 NOW ONLY £30 Save 9%**

### 2. Fleece lined Sherpa Collared Cable Zipper - JF220

Cable knit full zip fleece-lined cardigan. Featuring a Soft fleece inside the high neck collar and two waist pockets, it blends cosy comfort with a timeless, textured design for versatile everyday wear.

100% Polyester. Colour: **Navy**

Size: M 40", L 42", XL 44", 2XL 46"

**\*Was £38 NOW ONLY £36 Save 5%**

WAS £38

SAVE\*  
5%

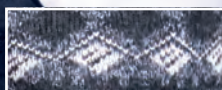


FLEECE  
INNER LINING

2



WINE



CHARCOAL



Sherpa  
Collar





WAS £30

SAVE\*  
**26%**

SIZES

UP TO  
**2XL**

GREY



BEIGE

NAVY

## Arctic Fleece Lined Zip Jumper - JF173

This fleece lined zipped jumper comes in a regular fit that offers a comfortable and relaxed feel. It features a full zip front that makes it easy to wear and take off. The high funnel neck provides extra warmth and protection against chilly winds, while the two side pockets offer ample space to store your essentials. Crafted with a blend of 50% cotton and 50% polyester, this jacket is soft and durable. The cotton ensures breath-ability and comfort, while the polyester provides durability and wrinkle resistance.

Colours: **Beige, Navy & Grey**

Size: M 38/40" L 42/44" XL 44/46" 2XL 46/48"

**\*Was £30 NOW ONLY £22 Save 26%**



FULL ZIP CLOSURE



TWO SIDE POCKETS

CALL to order 0303 031 0310

21

ONLINE orders [www.jolliman.co.uk](http://www.jolliman.co.uk)

# ENGINEERED TO FIT AND FLEX WITH YOU

Quality, Reliability, and Comfort You Can Feel!

**HURRY... LIMITED STOCK!**

**1**

**WAIST  
SIZE**

UP TO  
**60"**

**SUPERIOR  
CREASE**

Only **£7**  
Per Trousers

**MIX &  
MATCH  
ANY 2  
COLOURS**



BEIGE



BROWN



GREY

**WAS £17**

**SAVE\*  
11%**

**« EXPANDING WAIST »**  
TECHNOLOGY

## 1. Comfort Waist Trousers - JA64

Flat fronted. Button and clip fastening. Zip fly, 2" Self adjusting waist. Slanted side pockets and buttoned back pocket. Belt loops for belts up to 1½" wide. 100% Polyester. Machine washable.

Colours: **Beige, Brown & Grey**

Waist: 30", 32", 34", 36", 38", 40", 42", 44",

46", 48", 50", 52", 54", 56", 58", 60"

Leg: Extra Short (27") Short (29") Regular (31")

**\*Was £17 NOW ONLY £15 Save 11%**

**2**

**SUPERIOR  
CREASE**

Only **£7**  
Per Trousers

**MIX &  
MATCH  
ANY 2  
COLOURS**



ORANGE



BISCUIT



WALNUT

**2 FOR £40**

**SAVE\*  
9%**



**SOFT PEACH  
FINISH**

**« EXPANDING WAIST »**  
TECHNOLOGY

## 2. Premium Expanding Waist Travel Trousers - JA180

Equipped with an expanding waist that adapts to you. Shirt-gripping waistband keeps your shirt neatly tucked in. Soft poly/viscose fabric with a peach finish and 4% stretch.

Colours: **Burnt Orange, Biscuit & Walnut**

Waist: 34", 36", 38", 40", 42", 44", 46", 48",

Leg: Extra Short (27") Short (29") Regular (31")

**\*Buy 1 for £22 EACH or Buy 2 for £20 EACH!**

CALL to order 0303 031 0310

22

ONLINE orders [www.jolliman.co.uk](http://www.jolliman.co.uk)



2 FOR £54

SAVE\*  
10%



1

## 1. Marl-knit Zip Front Cardigan - JF132

This versatile jacquard cardigan is perfect for both smart and casual wear. It features a sleek mandarin-style collar, full zip fastening, two front patch pockets, and ribbed cuffs and hem, offering a blend of style, comfort, and practicality for any occasion. 100% Acrylic. Colours: **Blue, Grey, Wine & Beige**  
Size: M 38/40" L 42/44" XL 46/48"  
2XL 50/52" 3XL 54/56" 4XL 58/60"

**\*Buy 1 for £30 EACH or Buy 2 for £27 EACH!**

## 2. Classic Design Zip Cardigan - JF166

Features a concealed zip, half-moon collar, and two front pockets, along with ribbed cuffs and hem for a snug fit. Perfect for layering, it pairs well with a plain shirt or can be worn casually, offering a blend of style, comfort and versatility. 100% Soft Acrylic. Colours: **Grey, Black, Blue, Wine, Beige & Navy**  
Size: M 38/40" L 42/44" XL 46/48" 2XL 50/52" 3XL 54/56"

**\*Buy 1 for £26 EACH or Buy 2 for £23 EACH!**



2 FOR £46

SAVE\*  
10%



2



**MIX&MATCH ANY 2 COLOURS**



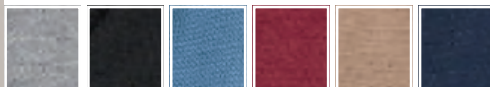
BLUE

GREY

WINE

BEIGE

**MIX&MATCH ANY 2 COLOURS**



GREY

BLACK

BLUE

WINE

BEIGE

NAVY

CALL to order 0303 031 0310

23

ONLINE orders [www.jolliman.co.uk](http://www.jolliman.co.uk)

2 FOR £40

SAVE\*  
9%

CLARET



ZIP NECK  
FASTENING

TAUPE



**MIX & MATCH** ANY 2 COLOURS

BLUE

FRONT  
POCKETS



### Pattern Full Zip Knit Cardigan - JF216

This medium-weight full-zip cardigan features a classic crew neck, cable knit design, and contrasting chest pattern for a sophisticated yet modern look. Warm yet lightweight, it's perfect for layering, with two patch pockets adding functionality. A versatile choice for any season. 100% Acrylic.

Colours: **Claret, Taupe & Blue**

Size: M 40" L 42" XL 44" 2XL 46/48"

**\*Buy 1 for £22 EACH or**

**Buy 2 for £20 EACH!**

SIZES

UP TO  
**2XL**



CALL to order 0303 031 0310

24

ONLINE orders [www.jolliman.co.uk](http://www.jolliman.co.uk)



WAS £38

NOW  
£36\*

1



OLIVE



NAVY



TWEED BLAZER - JC201

### 1. Combe Crew Neck Sweater - JF223

Classic tonal stripe lightweight crew neck jumper. Its subtle stripe design adds a modern touch, while the lightweight fabric ensures comfort and versatility for layering or wearing solo in any season. 100% Acrylic

Colours: **Olive & Navy**

Size: M 38/40" L 42/44" XL 44/46" 2XL 46/48"

\*Was £38 **NOW ONLY £36 Save 5%**

### 2. Argyle Pattern Sweater - JF157

The intricate Argyle design adds a touch of timeless elegance, making it ideal for those who value both style and practicality. Whether you're heading to a business meeting or dining out, this piece ensures you look sharp and feel comfortable.

50% Cotton | 50% Acrylic. Colours: **Beige & Blue**

Size: M 38/40" L 42/44" XL 46/48" 2XL 50/52"

\*Buy 1 for £18 EACH or **Buy 2 for £16 EACH!**

2 FOR £32

SAVE\*  
11%



2



**MIX & MATCH** ANY 2 COLOURS



BLUE



BEIGE

CALL to order 0303 031 0310

25

ONLINE orders [www.jolliman.co.uk](http://www.jolliman.co.uk)

2 FOR £40

SAVE\*  
**16%**



LIGHT  
WEIGHT



UK  
MADE

1



**MIX&MATCH** ANY 2 COLOURS



NAVY



BEIGE



PLUM



SOFT  
TOUCH



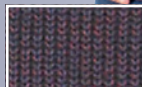
UK  
MADE

2



WAS £38

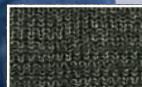
NOW  
**£36\***



PLUM



NAVY



OLIVE

## 1. V-Neck Patterned Jumper - JF198

Long sleeve V neck sweaters have always been a favourite for Jolliman customers. Our v-neck Jacquard sweater is a lighter weight and has a ribbed neck, cuffs and hem to maintain its shape and look smart. 50% Cotton | 50% Acrylic.

Colours: **Navy, Beige & Plum**

Size: M 38/40" L 42/44" XL 44/46" 2XL 46/48"

**\*Buy 1 for £24 EACH or Buy 2 for £20 EACH!**

## 2. Chunky Knit Crew Neck Jumper - JF194

Crafted with care on traditional hand-framed knitting machines in the heart of the Lake District, this sweater brings together heritage and style. It's perfect for layering over shirts and pairs effortlessly with your favourite cords or jeans, offering comfort and versatility for any occasion. 100% Soft Acrylic Material. Colours: **Plum, Olive & Navy**

Size: M 38/40" L 42/44" XL 44/46" 2XL 46/48"

**\*Was £38 NOW ONLY £36 Save 5%**

CALL to order 0303 031 0310

26

ONLINE orders [www.jolliman.co.uk](http://www.jolliman.co.uk)



Champion.

2 FOR £56

SAVE\*  
6%



1

### 1. Pennine Padded Shirt - JB314

Durable and comfortable, this jacket features a luxurious 100% polyester sherpa fleece lining for warmth and softness. It has two chest pockets for small items, two lower pockets for added convenience, button fastening for a secure fit, and a straight hem for a sleek look. 65% Polyester | 35% Cotton. Colours: **Blue, Green & Red**

Size: M 40" L 42" XL 44" 2XL 46/48" 3XL 48/50"

**\*Buy 1 for £30 EACH or Buy 2 for £28 EACH!**

### 2. Totnes Padded Shirt - JB197

Quilted padded check shirt. 2 chest pockets with button flaps. Exterior hard-wearing 65% Polyester, 35% Cotton yarn dyed flannel - lightly brushed for a soft touch feel. Interior lining 65% Polyester, 35% Cotton with polyester padding for insulation. Two inches longer than standard length. Straight hem and side slits. Colours: **Blue, Green & Red**

Size: M 38/40" L 42/44" XL 46/48" 2XL 48/50" 3XL 52/54"

**\*Buy 1 for £26 EACH or Buy 2 for £23 EACH!**



2 FOR £46

SAVE\*  
11%



2

**MIX&MATCH ANY 2 COLOURS**



BLUE



GREEN



RED



*Sherpa lining!*



**MIX&MATCH ANY 2 COLOURS**



BLUE



GREEN



RED

CALL to order 0303 031 0310

27

ONLINE orders [www.jolliman.co.uk](http://www.jolliman.co.uk)

WAS £20

SAVE\*  
**25%**

# OVERSHIRTS AT LOW PRICES!

## Alaska Polar Fleece Long Sleeve Shirt - JB335

This checked shirt blends classic design with modern comfort. The lightweight fleece fabric offers warmth without bulk, making it perfect for layering. Its timeless plaid pattern adds style, while two chest pockets provide practicality. With a straight cut hem, it pairs well with jeans or chinos, ideal for casual settings.  
100% Polyester.

Colours: **Navy & Red**

Size: M 40" L 42" XL 44/46" 2XL 48"

**\*Was £20 NOW ONLY £15 Save 25%**

RED

**BUTTON  
CUFFS**



**LIGHT  
WEIGHT**

**NAVY**

*Flap Pockets!*

**SIZES**

UP TO  
**2XL**

CALL to order 0303 031 0310

28

ONLINE orders [www.jolliman.co.uk](http://www.jolliman.co.uk)



GREAT VALUE

ONLY  
£36

Champion.



FLAP  
POCKETS

Premium Style!

Fleece  
Lining

### 1. Kenmore Lined Overshirt - JB277

Timeless style meets comfort in this classic check shirt with a soft fleece lining and straight hem. This overshirt moves with you for a more relaxed fit. Featuring two convenient flap-button chest pockets to keep essentials close. Made from 100% Cotton.

Colour: **Navy**

Size: M 38/40" L 42/44" XL 46/48"

2XL 50/52" 3XL 52/54"

**GREAT VALUE ONLY £36**

### 2. Dumfries Hooded Lumber Jacket - JC192

Timeless country tartan check with a Sherpa fleece lining. Toggle fastening quilted hood for extra warmth, 2 flapped breast button pockets, and 2 side entry pockets. Comfortable to wear - looks stylish layered over a shirt or jumpers and teamed up with cords or jeans. Colour: **Grey & Blue**

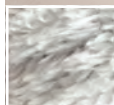
Size: M 38/40" L 42/44" XL 46/48" 2XL 50/52"

**\*Was £38 NOW ONLY £32 Save 15%**

Champion.

WAS £38

SAVE\*  
15%



SHERPA STYLE  
LINING



GREY



BLUE

CALL to order 0303 031 0310

29

ONLINE orders [www.jolliman.co.uk](http://www.jolliman.co.uk)

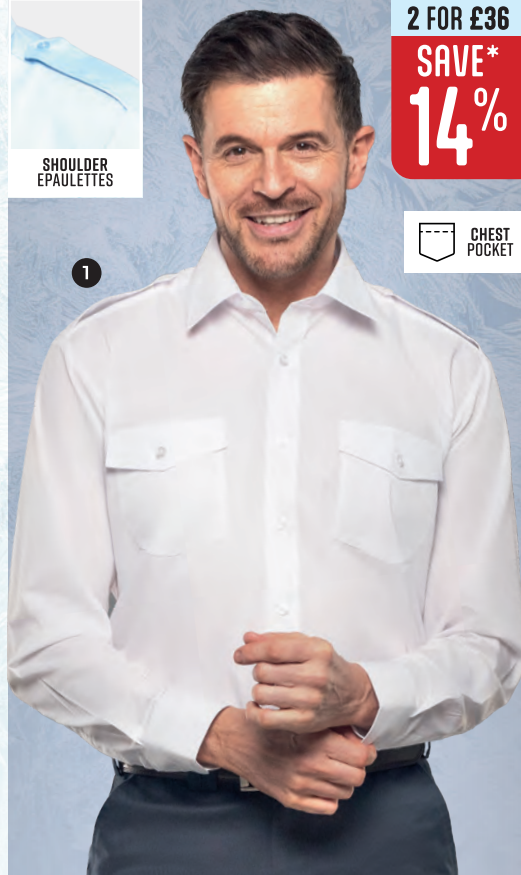
2 FOR £36

SAVE\*  
**14%**

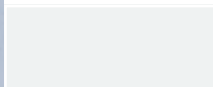
SHOULDER  
EPAULETTES

CHEST  
POCKET

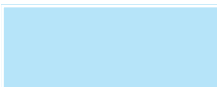
1



**MIX&MATCH** ANY 2 COLOURS



WHITE



BLUE



**SHORT SLEEVE - JB155**

## 1. Long Sleeve Pilot Shirt - JB81

Made from a cotton/polyester blend which is more durable than typical pure cotton shirts and is more breathable. Features two handy chest pockets that are ideal for carrying pocket-sized items.

65% Polyester | 35% Cotton.

Colours: **White & Blue**

Size: M 15½" L16" XL 17" 2XL 18" 3XL 19" 4XL 20" 5XL 21"

**\*Buy 1 for £21 EACH or Buy 2 for £18 EACH!**

## 2. Fisherman Rib Crew Neck Jumper - JF108

Military style fisherman rib crew jumper.

Coordinating reinforced shoulder and elbow patches plus ribbed cuffs and hem. Practical and comfortable - looks great with cords and country check shirts. Machine washable. 100% Acrylic.

Polycotton Corduroy Patches.

Colours: **Navy, Khaki & Black**

Size: M 38/40" L 42/44" XL 44/46" 2XL 46/48" 3XL 50/52"

**\*Buy 1 for £33 EACH or Buy 2 for £30 EACH!**

2 FOR £60

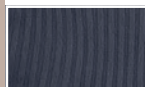
SAVE  
**£6\***

SHOULDER  
PATCHES

2



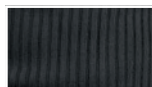
**MIX&MATCH** ANY 2 COLOURS



NAVY



KHAKI



BLACK

CALL to order 0303 031 0310

30

ONLINE orders [www.jolliman.co.uk](http://www.jolliman.co.uk)



Champion.

2 FOR £32

SAVE\*  
15%



## 1. Epsom Long Sleeve Shirt - JB283

This classic fit casual flannel shirt is styled with the ever popular Tattersall check design. Brushed on the inside for extra comfort and comes with a single breast pocket for those essentials, straight hem and 2 button cuff.

65% Polyester | 35% Cotton. Colours: **Green & Blue**

Size: M 40" L 42" XL 44" 2XL 46/48" 3XL 50/52" 4XL 54/56"

**\*Buy 1 for £19 EACH or Buy 2 for £16 EACH!**

## 2. Harrowgate Long Sleeve Shirt - JB313

This shirt offers comfort and durability. The button-down collar adds sophistication, while its generous fit and 2-inch longer length provide extra coverage and ease of movement. This shirt adapts effortlessly to any occasion. 55% Cotton | 45% Polyester.

Colour: **Blue**

Size: M 40" L 42" XL 44" 2XL 46/48"

3XL 48/50" 4XL 50/52"

**\*Buy 1 for £21 EACH or Buy 2 for £19 EACH!**

Champion.



2 FOR £38

SAVE  
£6\*

2



**MIX&MATCH** ANY 2 COLOURS



GREEN



BLUE



**CREW NECK SWEATER - JF223**

**BUTTON-DOWN  
COLLAR**



CALL to order 0303 031 0310

31

ONLINE orders [www.jolliman.co.uk](http://www.jolliman.co.uk)

*Style with*

## MIX&MATCH ANY 2 COLOURS



STONE



CREAM



1

SUPERIOR  
CREASE

Only £7  
Per Trousers

2 FOR £40

SAVE\*  
9%

WAIST  
SIZE

UP TO  
48"



« EXPANDING WAIST »  
TECHNOLOGY



## 1. Linen-Look Expanding Waist Trousers - JA181

Made from a special melange effect polyester fabric that not only adds a touch of elegance but also ensures breathability. Equipped with a shirt-gripping waistband, two side pockets, two back pockets with buttons and a front coin pocket. Experience the perfect blend of comfort and style.

Colours: **Stone & Cream**

Waist: 32" 34" 36" 38" 40" 42" 44" 46" 48"

Leg: Extra Short (27") Short (29") Regular (31")

**\*Buy 1 for £22 EACH or Buy 2 for £20 EACH!**

## 2. Salisbury Long Sleeve Shirt - JB284

This Salisbury shirt is another fine example of Champion classic fit country styling. Brushed fabric for extra comfort and comes with a single breast pocket for those essential items, branded buttons, straight hem and generously sized.

65% Polyester | 35% Cotton. Colours: **Green & Brown**

Size: M 40" L 42/44" XL 46" 2XL 48" 3XL 50/52" 4XL 54"

**\*Buy 1 for £22 EACH or Buy 2 for £19 EACH!**



2

2 FOR £38

SAVE\*  
13%

Champion.



CHEST  
POCKET

## MIX&MATCH ANY 2 COLOURS



GREEN



BROWN

CALL to order 0303 031 0310

32

ONLINE orders [www.jolliman.co.uk](http://www.jolliman.co.uk)



# GREAT OFFERS ON **F FARAH** TROUSERS

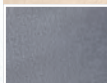
The More You Buy, The More You Save!

1

**MIX & MATCH**  
ANY 2  
COLOURS



NAVY



GREY



BLACK

**BUY 2**

**SAVE**  
**£10\***

**ELASTICATED**  
« WAIST »  
PULL ON AND GO!

**SUPERIOR**  
**CREASE**  
Only £7  
Per Trousers

**4 WAY ACTIVE**  
**STRETCH**

**EASY CARE**  
**FABRIC**

## 1. FARAH 4 Way Active Stretch Trousers - JA130

4 way active stretch waist easy care fabric, 2 back pockets with buttons and 2 side pockets. Flat front with French bearer and zip fly. 73% Polyester 21% Viscose 6% Elastane. Colours: **Navy, Grey & Black**  
Waist: 32" 34" 36" 38" 40" 42" 44" 46"  
Leg: Extra Short (27") Short (29") Regular (31")

\*Buy 1 for £55 EACH or **Buy 2 for £50 EACH!**

2

**MIX & MATCH**  
ANY 2  
COLOURS



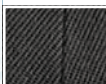
NAVY



GREY



BLACK



CHARCOAL



TAUPE

**BUY 2**

**SAVE**  
**£10\***

**ELASTICATED**  
« WAIST »  
PULL ON AND GO!

**SUPERIOR**  
**CREASE**  
Only £7  
Per Trousers

**EASY CARE**  
**FABRIC**

## 2. FARAH Easy Care Trousers - JA131

The Stretch Waistband not only offers style but all-day comfort. Featuring a French bearer, 2 side pockets, zip fly and single back pocket. 100% Polyester. Colours: **Navy, Grey, Black, Charcoal & Taupe**  
Waist: 32" 34" 36" 38" 40" 42" 44" 46"  
Leg: Extra Short (27") Short (29") Regular (31")

\*Buy 1 for £55 EACH or **Buy 2 for £50 EACH!**

CALL to order 0303 031 0310

33

ONLINE orders [www.jolliman.co.uk](http://www.jolliman.co.uk)

## MIX & MATCH ANY 2 COLOURS



STONEWASH



BLACK

1



WAIST  
SIZE

UPTO  
**60"**

2 FOR £48

SAVE\*  
**7%**

*great with a Belt!*

CLASSIC  
MENS BELT  
J1215

ONLY  
**£10**



### 1. Classic Denim Jeans - JA86

Regular fit straight leg jeans. Classic double stitching, button waist fastening/zip fly, 5 pocket western styling & belt loops up to 1½" wide. 100% Cotton.

Colours: **Black & Stonewash**

Waist: 32" 34" 36" 38" 40" 42" 44" 46" 48"

50" 52" 54" 56" 58" 60"

Leg: Extra Short (27") Short (29") Regular (31")

**\*Buy 1 for £26 EACH or Buy 2 for £24 EACH!**

### 2. Classic Birkdale Jacket - JC67

This regular-fit jacket is lightweight and water-resistant, featuring a full zip front closure for easy wear. Made from soft-touch microfibre, it includes a breathable mesh lining, adjustable cuffs, two side-entry pockets, and two inside pockets for added convenience. 100% Polyester Microfibre.

Colours: **Navy & Stone**

Size: M 42/44" L 44/45" XL 46/48" 2XL 50/52" 3XL 54/56"

**BEST PRICE ONLY £30**

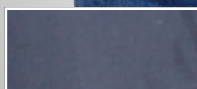
Champion.



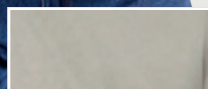
BEST PRICE

ONLY  
**£30**

2



NAVY



STONE

CALL to order 0303 031 0310

34

ONLINE orders [www.jolliman.co.uk](http://www.jolliman.co.uk)





WAS £34

SAVE\*  
**8%**

**ELASTICATED**  
**«WAIST»**  
**PULL ON AND GO!**



1



**MIX&MATCH ANY 2 COLOURS**



BLACK



NAVY



WINE



GREEN



STONE

### 1. Harrington Jacket - JC121

The timeless Harrington Jacket, a classic favourite, remains popular for its versatile, easy-care fabric, slanted pockets, and ribbed cuffs and hem. 100% Peach Finish Polyester.

Colours: **Black, Navy, Wine, Green & Stone**

Chest Size: S 40" M 42" L 44" XL 46/48" 2XL 50/52" 3XL 54" 4XL 56" 5XL 58"

**\*Was £34 NOW ONLY £31 Save 8%**

### 2. Easy Pull On Jean Trousers - JA176

Comfortable elasticated waist and internal drawstrings for easy movement. Flat fly front, button fastening. Two front pockets and one back pocket. Machine-washable poly-cotton blend. Colour: **Denim**

Waist: 32" 34" 36" 38" 40" 42" 44" 46" 48" 50" 52" 54" 56" 58" 60"

Leg: Extra Short (27") Short (29") Regular (31")

**\*Was £32 NOW ONLY £27 Save 15%**

2



**WAIST**  
**SIZE**

UP TO  
**60"**

WAS £32

SAVE\*  
**15%**

*Comfortable fitting!*

CALL to order 0303 031 0310

35

ONLINE orders [www.jolliman.co.uk](http://www.jolliman.co.uk)

# GREAT OFFERS ON THERMAL LINED COLLECTION

The More You Buy, The More You Save!



DRAWSTRING  
WAIST

1

2 FOR £55

SAVE  
£5\*



THERMAL  
LINED

MIX & MATCH  
ANY 2  
COLOURS



KHAKI



BLACK



STONE



NAVY

ELASTICATED  
« WAIST »

PULL ON AND GO!



**1. Thermal Lined Easy Pull On Trousers - JA116**  
Thermal lined, quick drying. Expandable waist, button fastening and drawstring. Zip fly, 2 side and 2 buttoned back pockets. 65% Polyester | 35% Cotton. Inner: 100% Polyester. Colours: **Khaki, Black, Stone & Navy**  
Waist: 32", 34", 36", 38", 40", 42", 44", 46", 48", 50"  
Leg: Extra Short (27") Short (29") Regular (31")

\*Buy 1 for £30 EACH or **Buy 2 for £27.50 EACH!**



WATER  
RESISTANT

2

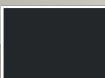
WAS £44

SAVE\*  
31%



THERMAL  
LINED

MULTI  
POCKET  
6 ZIP  
+3 OPEN



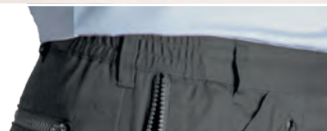
BLACK



NAVY

ELASTICATED  
« WAIST »

PULL ON AND GO!



**2. Multi Pocket Fleece Lined Action Trousers - JA81**  
Multi-pocket, fleece lined action trousers. Part elasticated waistband for added comfort. Quick drying water repellent finish. 6 zip & 3 open pockets. 65% Polyester | 35% Cotton. Colours: **Black & Navy**  
Waist: 32", 34", 36", 38", 40", 42", 44", 46"  
Leg: Extra Short (27") Short (29") Regular (31")

\*Was £44 **NOW ONLY £30 Save 31%**

CALL to order 0303 031 0310

36

ONLINE orders [www.jolliman.co.uk](http://www.jolliman.co.uk)



FLEECE  
BACKEDCHEST  
POCKET

2 FOR £26

SAVE\*  
**23%**

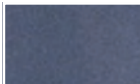
1

**MIX&MATCH ANY 2 COLOURS**

CHARCOAL



BURGUNDY



NAVY

**1. Long Sleeve Polo Shirt - JB251**

The long sleeves are perfect for layering while keeping a polished look. A 3-button placket offers versatility, and side vents with an extended back provide comfort and ease of movement all day.

65% Polyester | 35% Cotton.

Colours: **Charcoal, Burgundy & Navy**

Size: M 40" L 42" XL 44" 2XL 46/48" 3XL 50/52" 4XL 54/56"

**\*Buy 1 for £17 EACH or Buy 2 for £13 EACH!**

**2. Stripe Design Fleece Lined Polo - JB342**

Heavyweight pullover sweat. Featuring a brush-backed fleece jersey, tri-colour sewn blocks, a smart collar with 3-button placket, it's the perfect blend of comfort and modern design.

65% Cotton | 35% Polyester

Colour: **Navy/Mustard, Grey/Navy & Navy/Blue**

Size: M 38/40" L 42/44" XL 46/48" 2XL 50/52"

**\*Buy 1 for £24 EACH or Buy 2 for £20 EACH!**

FLEECE  
BACKED

2 FOR £40

SAVE\*  
**16%**

2

*Brushed Comfort!***MIX&MATCH ANY 2 COLOURS**

NAVY/MUSTARD



GREY/NAVY



NAVY/BLUE

CALL to order 0303 031 0310

37

ONLINE orders [www.jolliman.co.uk](http://www.jolliman.co.uk)

**ECO**  
Fabric

WAS £19

SAVE\*  
**21%**



1



BURGUNDY



ROYAL



BLACK



CHARCOAL



NAVY

### 1. Eco Crew Neck Jumper - JF215

Eco-friendly fleece-backed jumper. Rich, lasting colour from reactive dye. Twin needle stitching. Tailored set-in sleeves, offers both style and comfort. Lycra ribbed cuffs and neck. **50% Recycled Polyester 30% Recycled Cotton 20% Organic Cotton**  
Colours: **Burgundy, Royal, Black, Charcoal & Navy**  
Size: S 38/40" M 40/42" L 42/44" XL 44/46" 2XL 46/48" 3XL 50/52"

\*Was £19 **NOW ONLY £15 Save 21%**

### 2. Fleece Lined 3 Button Polo - JB238

Stylish and comfortable brushed-back Fleece jersey pullover sweat. Featuring a 3-button placket collar, and chest pocket, it offers a refined look, a classic and versatile wardrobe essential.  
65% Cotton | 35% Polyester.

Colour: **Wine, Navy & Denim**

Size: M 38/40" L 42/44" XL 46/48" 2XL 50/52"

\*Buy 1 for £19 EACH or **Buy 2 for £17.50 EACH!**



CHEST  
POCKET



FLEECE  
BACKED

2 FOR £35

SAVE\*  
**7%**

2



**MIX & MATCH** ANY 2 COLOURS



WINE



NAVY



DENIM

CALL to order 0303 031 0310

38

ONLINE orders [www.jolliman.co.uk](http://www.jolliman.co.uk)



WAS £29

SAVE\*  
**20%**



**ELASTICATED  
« WAIST »**  
**PULL ON AND GO!**

1



### 1. Thor Interactive Fleece - JE15

Professionally made from anti-pill polyester fleece with an adjustable shock-cord hem, full-length zippered front. 2 slant zip pockets and Raglan sleeves. Quick drying. 100% Polyester.

Colours: **Black, Royal Blue, Navy, Bordeaux & Grey**  
Size: S 38" M 40" L 42" XL 44" 2XL 46" 3XL 48" 4XL 50"

\*Was £29 **NOW ONLY £23 Save 20%**

### 2. Multi Pocket Action Trousers - JA172

Partially elasticated waist, belt loops, zip fly, button closure, and 9 pockets, including side slant, zip, hip, and back pockets. Made from a durable polycotton blend. Colours: **Navy & Black**

Waist: 32", 34", 36", 38", 40", 42", 44", 46", 48", 50", 52"  
Leg: Extra Short (27") Short (29") Regular (31")

\*Buy 1 for £28 EACH or **Buy 2 for £25 EACH!**

2

2 FOR £50

SAVE  
**£6\***



**WATER  
RESISTANT**

**9**

**MULTI-USE  
POCKETS**



**MIX & MATCH  
ANY 2 COLOURS**



NAVY



BLACK

CALL to order 0303 031 0310

39

ONLINE orders [www.jolliman.co.uk](http://www.jolliman.co.uk)

# GREAT OFFERS ON EASY PULL-ON COLLECTION

The More You Buy, The More You Save!



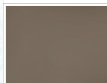
DRAWSTRING  
WAIST

1

2 FOR £50

SAVE\*  
**13%**

**MIX & MATCH**  
ANY 2  
COLOURS



KHAKI



SKY



STONE



NAVY

**ELASTICATED**  
« WAIST »

PULL ON AND GO!

## 1. Easy Pull On Chino Trouser - JA19

**RELAXED FIT** elasticated waist with drawstring. Flat fly-front with button fastening. 2 side pockets. 1 buttoned back pocket. Belt loops. 65% Polyester | 35% Cotton. Colours: **Khaki, Sky, Stone & Navy**  
Waist: 34" 36" 38" 40" 42" 44" 46" 48" 50" 52" 54" 56" 58" 60"  
Leg: Extra Short (27") Short (29") Regular (31")

\*Buy 1 for **£29 EACH** or **Buy 2 for £25 EACH!**



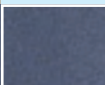
DRAWSTRING  
WAIST

2

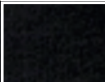
WAS **£24**

SAVE\*  
**16%**

**7**  
MULTI-USE  
POCKETS



NAVY



BLACK



RECYCLED  
FABRIC

**ELASTICATED**  
« WAIST »

PULL ON AND GO!

## 2. Multi Pocket Elasticated Waist Trouser - JA182

Sustainable recycled 100% polyester herringbone effect fabric. 2 side, 2 back and 2 knee cargo pockets secured with Velcro. We've also added a zipped side security pocket. Colours: **Navy & Black**  
Waist: 34" 36" 38" 40" 42" 44" 46" 48"  
Leg: Extra Short (27") Short (29") Regular (31")

\*Was **£24 NOW ONLY £20 Save 16%**

CALL to order 0303 031 0310

40

ONLINE orders [www.jolliman.co.uk](http://www.jolliman.co.uk)



# GREAT OFFERS ON EASY PULL-ON COLLECTION

The More You Buy, The More You Save!



DRAWSTRING  
WAIST

1

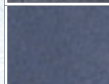
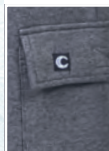
2 FOR £40

SAVE\*  
**16%**

**MIX &  
MATCH**  
ANY 2  
COLOURS



CARGO  
POCKETS



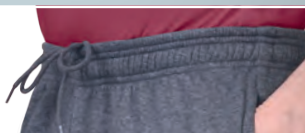
NAVY



BLACK

**ELASTICATED**  
« WAIST »

PULL ON AND GO!



## 1. Easy Pull on Cargo Jogger - JA178

Our Leisure Joggers, equipped with combat pockets for your everyday essentials. Brushed interior for added comfort, an elasticated waist with drawstrings, and open hems. Colours: **Navy & Black**  
Waist: M 32/34" L 36/38" XL 40/42" 2XL 44/46"  
3XL 48/50" 4XL 52/54" 5XL 56/58"

\*Buy 1 for £24 EACH or **Buy 2 for £20 EACH!**



DRAWSTRING  
WAIST

2

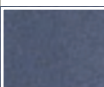
2 FOR £40

SAVE\*  
**9%**

**MIX &  
MATCH**  
ANY 2  
COLOURS



ZIP SIDE  
POCKETS



NAVY



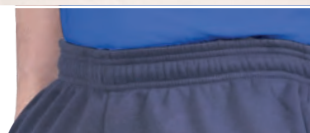
GREY



BLACK

**ELASTICATED**  
« WAIST »

PULL ON AND GO!



## 2. Easy Pull on Leisure Jogger - JA113

Men's casual style joggers. Brushed on the inside for extra warmth and comfort. Featuring open hems and an elasticated waistband with drawstrings.  
60% Cotton | 40% Polyester. Colours: **Navy, Grey & Black**  
Waist: M 32/34" L 36/38" XL 40/42" 2XL 44/46" 3XL 48/50"  
4XL 52/54" 5XL 56/58"

\*Buy 1 for £22 EACH or **Buy 2 for £20 EACH!**

CALL to order 0303 031 0310

41

ONLINE orders [www.jolliman.co.uk](http://www.jolliman.co.uk)

**BEST PRICE**

**ONLY  
£35**

**REGATTA**   
GREAT OUTDOORS™

1



**WATER/STAIN  
RESISTANT**

**5  
MULTI-USE  
POCKETS**



**BEIGE**



**NAVY**



**GREY**



**BLACK**

**LEG**

**UP TO  
33"**

**ELASTICATED  
« WAIST »**

**PULL ON AND GO!**

### 1. REGATTA Action Trousers - JA67

Durable & water repellent, ideal for walking, gardening, or work-wear. Part elasticated waist, open and zipped pockets. 65% Polyester | 35% Cotton.

Colours: **Beige, Navy, Grey & Black**

Waist: 32" 34" 36" 38" 40" 42" 44" 46"

Leg: Extra Short (27") Short (29") Regular (31") Long (33")

**BEST PRICE ONLY £35**

**WAS £32**

**SAVE\*  
21%**

2



**DRAWSTRING  
WAIST**

**GREY**

**2  
PACK**

**NAVY**

**ELASTICATED  
« WAIST »**

**PULL ON AND GO!**

### 2. Easy Pull On Quality Plus Trousers - JA185

Adjustable elasticated waist. Internal drawstring. Flat fly-front with button fastening, two side pockets, one button back pocket. Belt loops for belts up to 1.5" wide. Made from sustainable recycled fabric. Colours: **1 x Grey - 1 x Navy**  
Waist: 34", 36", 38", 40", 42", 44", 46", 48", 50", 52", 54", 56", 58", 60"  
Leg: Extra Short (27") Short (29") Regular (31")

**\*Was £32 NOW ONLY £25 Save 16%**

**CALL to order 0303 031 0310**

**42**

**ONLINE orders [www.jolliman.co.uk](http://www.jolliman.co.uk)**



WAS £48

SAVE\*  
**22%**



WATER  
RESISTANT



FRONT  
POCKETS



FLEECE  
LINING

1



### 1. All-Weather Windproof Jacket - JC171

Windproof jacket with adjustable hem, cuffs and concealed hood. Waterproof fabric with taped seams. Features 220gsm microfleece lining, fleece-lined collar, insulated sleeves, articulated elbows, two zipped pockets, inner patch pocket, and toggles. 100% Waterproof Polyester.

Colours: **Navy/Red, Black/Yellow & Grey/Orange**

Size: S 38/40" M 40/42" L 42/44" XL 44/46" 2XL 46/48" 3XL 50/52" 4XL 52/54"

**\*Was £48 NOW ONLY £37 Save 22%**

### 2. Be Seen Night Winter Jacket - JC208

Waterproof with taped seams, padded lining, hood with adjustable drawcord, phone pocket, 3 pockets. Retro Reflective Strips. Elasticated cuffs. Outer: 100% Polyester PU Coated. Colours: **Orange & Yellow**

**\*Was £36 NOW ONLY £30 Save 22%**

**UKCA Certified & CE Certified**

WAS £36

SAVE\*  
**16%**



WATER  
RESISTANT



FRONT  
POCKETS

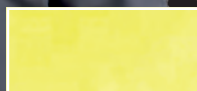


PADED  
LINING

2



ORANGE



YELLOW



Navy/Red

Black/Yellow

Grey/Orange

CALL to order 0303 031 0310

43

ONLINE orders [www.jolliman.co.uk](http://www.jolliman.co.uk)

# MULTI-BUY OFFERS ON MENS T-SHIRTS & POLOS

*The More You Buy, The More **You Save!***

## 1. Crew Neck T-Shirt - JB88

Crew neck T-shirts are the essential addition to every man's wardrobe they are simple versatile and can be worn under, layer up or just on their own. Jolliman's Crew neck regular fit T-shirt collection in 100% Pure Cotton.

Colours: **Black, Sky, Royal Blue, Beige, White, Green, Grey & Burgundy**

Size: M 40" L 42/44" XL 46" 2XL 48" 3XL 50/52" 4XL 54"

**\*Buy 1 for £8 EACH or Buy 3 for £6 EACH!**

**MIX & MATCH**  
ANY 2 COLOURS

BLACK	SKY	ROYAL	BEIGE
WHITE	GREEN	GREY	BURGUNDY



**8**  
COLOURS

**3 FOR £18**

**SAVE**  
**25%**



**11**  
COLOURS

**2 FOR £20**

**SAVE**  
**16%**



## 2. Classic Pique Polo Shirt - JB148

Team up with your favourite shorts, jeans or chinos. Or for those chillier days or evenings you can layer up with sweaters or simply a jacket. Generous Fit. 50% Cotton | 50% Polyester.

Colours: **Black, Green, Navy, Maroon, Royal, White, Sky, Grey, Yellow, Orange & Red**

Size: M 40" L 42/44" XL 46" 2XL 48" 3XL 50/52" 4XL 54"

**\*Buy 1 for £12 EACH or Buy 2 for £10 EACH!**

**MIX & MATCH** ANY 2 COLOURS

BLACK	GREEN	NAVY	MAROON	ROYAL	
WHITE	SKY	GREY	YELLOW	ORANGE	RED

**CALL to order 0303 031 0310**

44

**ONLINE orders [www.jolliman.co.uk](http://www.jolliman.co.uk)**



WAS £23

SAVE\*  
£10

WINE

1

ROYAL

GREY

TEAL

### 1. Sailboat Patterned Casual Polo - JB329

Colours: **Royal, Grey, Teal & Wine**

Size: M 40" L 42/44" XL 46" 2XL 48/50"

\*Was £23 **NOW ONLY £13 Save 43%**

WAS £23

SAVE\*  
£10

BEIGE

2

WINE

GREY

BLUE

### 2. Ashbourne Polo Shirt - JB262

Colours: **Wine, Grey, Beige & Blue** Size: M 38/40" L 42/44" XL 46/48" 2XL 50/52"

\*Was £23 **NOW ONLY £13 Save 43%**

WAS £23

SAVE\*  
£10

BLUE

3

GREY

TEAL

### 3. Horizontal Design Polo Shirt - JB226

Colours: **Blue, Grey & Teal**

Size: M 38/40" L 42/44" XL 46/48" 2XL 50/52"

\*Was £23 **NOW ONLY £13 Save 43%**

**Flexi-Waist Trousers**

SAVE UP TO 26%

Was £30 **NOW ONLY £22**

4

  
**DRAWSTRING  
WAIST**

SALMON

STONE

SKY

WAS £30

SAVE\*  
£8

**Flexi**  
«WAIST»

### 4. Flexi-Waist Trousers - JA188

Featuring a drawstring tie, button fastening, and 1/2 elasticated back for the perfect fit. With 2 buttoned back pockets and a comfort fit. 100% Polyester.

Colours: **Salmon, Stone & Sky**

Waist: 32" 34" 36" 38" 40" 42" 44" 46" 48"

Leg: Extra Short (27") Short (29") Regular (31")

\*Was £30 **NOW ONLY £22 Save 26%**

CALL to order 0303 031 0310

45

ONLINE orders [www.jolliman.co.uk](http://www.jolliman.co.uk)

# MENS PYJAMAS SETS FROM ONLY £24\* EACH

*Unmatched Quality - Unbeatable Deals!*

## Kingston 100% Brushed Cotton Pyjamas - JG50

Classically designed pyjama set designed for warmth and comfort. The shirt showcases a turned-down collar, chest pocket and effortlessly undoable buttons, while the bottoms offer an elasticated waist and convenient button fly for added ease. With stylish piping detail throughout. Machine washable. 100% Brushed Cotton.

Colours: **Burgundy & Blue**

Size: S 36/38" M 38/40" L 42/44"  
XL 44/46" 2XL 48/50" 3XL 52/54"

**\*Buy 1 for £27 EACH  
or Buy 2 for £24 EACH!**

**2 FOR £48**

**SAVE  
£6\***

**MIX &  
MATCH**  
**ANY 2 ITEMS**  
WITH THE SAME  
MULTI-BUY SAVING!



BURGUNDY



BLUE



*Brushed  
100% Cotton*

AVAILABLE IN  
**BURGUNDY OR BLUE**

CALL to order 0303 031 0310

46

ONLINE orders [www.jolliman.co.uk](http://www.jolliman.co.uk)



# MULTI-BUY OFFERS ON MENS NIGHTWEAR

The More You Buy, The More You Save!

2 FOR £48

SAVE  
£6\*



2 FOR £54

SAVE\*  
10%



## 1. Cambridge Pyjamas - JG53

Pure brushed cotton. Button full opening jacket for easy dressing. Chest pocket. Trousers have an elasticated waistband with adjuster. 100% Brushed Cotton.

Colours: **Red & Navy**

Sizes: M 38/40" L 42/44" XL 44/46" 2XL 48/50" 3XL 52/54"

\*Buy 1 for £27 EACH or **Buy 2 for £24 EACH!**

## 2. Knightsbridge Dressing Gown - JG51

Wear this soft touch fleece dressing gown for lazy evenings around the house. Ideal for the chilly weather, the dressing gown offers tie fastening, twin pockets and a hanging hook. 100% Polyester.

Colour: **Navy**

Sizes: M 38/40" L 42/44" XL 46" 2XL 48"

\*Buy 1 for £30 EACH or **Buy 2 for £27 EACH!**

CALL to order 0303 031 0310

47

ONLINE orders [www.jolliman.co.uk](http://www.jolliman.co.uk)

# THE MORE YOU BUY, THE MORE YOU SAVE!

Unmatched Quality - Unbeatable Deals!

Champion.



1

2 FOR £40

SAVE\*  
**13%**

**< MIX & MATCH >**  
ANY 2 ITEMS  
WITH THE SAME  
MULTI-BUY SAVING!

Champion.



2

*Lightweight*



BLUE

NAVY

## 1. Harrow Nightshirt - JG33

Stylish stripes and a soft finish, this Harrow nightshirt will ensure you have a comfortable sleep. Long sleeves and chest pocket. 100% Brushed Cotton.

Colours: **Blue & Navy**

Size: M 38/40" L 42/44" XL 46" 2XL 48" 3XL 50/52"

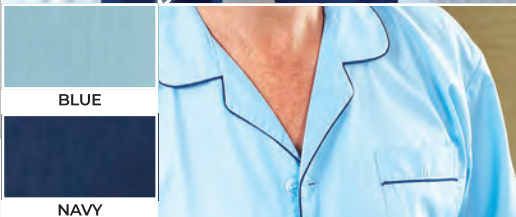
\*Buy 1 for **£23 EACH** or **Buy 2 for £20 EACH!**

## 2. Thames Pyjamas - JG11

Lightweight for good nights and good mornings. Single chest pocket with contrast piping at collar and leg hem. Elasticated waist. 65% Polyester | 35% Cotton. Colours: **Blue & Navy**

Size: S 36/38" M 38/40" L 42/44" XL 44/46"  
2XL 48/50" 3XL 52/54"

\*Buy 1 for **£23 EACH** or **Buy 2 for £20 EACH!**



BLUE

NAVY



CALL to order 0303 031 0310

48

ONLINE orders [www.jolliman.co.uk](http://www.jolliman.co.uk)



# ANY 2 PYJAMA BOTTOMS FROM ONLY £24\* EACH

The More You Buy, The More You Save!



## 1. Cambridge Pyjama Bottoms (2Pk) - JG54

Pyjama bottoms with a comfortable elasticated waistband, two button adjuster and button fly. Lightweight and soft, perfect for a great nights sleep. 100% Brushed Cotton. Colour: **Blue**

Sizes: M 38/40" L 42/44"  
XL 46" 2XL 48" 3XL 50/52"

**\*Buy 1 for £27 EACH or Buy 2 for £24 EACH!**

## 2. Kingston Stripe Pyjama Bottoms (2Pk) - JG31

Stay comfortable all night long in these pyjama bottoms with two in a pack. Button fastening, regular fit with fully elasticated waist for extra room and comfort during the night. 100% Cotton.

Colour: **Navy**  
M 38/40" L 42/44" XL 44/46" 2XL 48/50" 3XL 52/54"

**\*Buy 1 for £27 EACH or Buy 2 for £24 EACH!**

2 FOR £48

SAVE  
£6\*

**< MIX & MATCH >**  
ANY 2 ITEMS  
WITH THE SAME  
MULTI-BUY SAVING!

2  
PACK

2

Brushed  
100% Cotton



2  
PACK

CALL to order 0303 031 0310

49

ONLINE orders [www.jolliman.co.uk](http://www.jolliman.co.uk)

2 FOR £30

SAVE\*  
16%



THERMAL  
WARMTH

### Thermal Short Sleeve Vest - JH44

50% Polyester | 50% Brushed thermal Cotton,  
Colour: **White** Size: Small - 4XL **\*£18 EACH - 2 FOR £30**

2 FOR £30

SAVE\*  
16%



THERMAL  
WARMTH

### Thermal Long Sleeve Vest - JH28

50% Polyester | 50% Brushed thermal Cotton  
Colour: **White** Size: Small - 4XL **\*£18 EACH - 2 FOR £30**

2 FOR £30

SAVE\*  
16%



THERMAL  
WARMTH

### Thermal Long Johns - JH42

50% Polyester | 50% Brushed thermal Cotton.  
Colour: **White** Size: Small - 4XL **\*£18 EACH - 2 FOR £30**

3 FOR £25

SAVE\*  
30%



100% PURE  
COTTON

### Sleeveless Vest - JH39

100% Soft Combed Cotton. Colour: **White** Size: Medium - 5XL  
**\*£12 EACH - 3 FOR £25**

3 FOR £25

SAVE\*  
30%



100% PURE  
COTTON

### Cotton Trunks - JH41

100% Soft Combed Cotton. Colour: **White** Size: Medium - 5XL  
**\*£12 EACH - 3 FOR £25**

3 FOR £25

SAVE\*  
30%



100% PURE  
COTTON

### Cotton Briefs - JH40

100% Soft Combed Cotton. Colour: **White** Size: Small - 5XL  
**\*£12 EACH - 3 FOR £25**

2 FOR £20

SAVE\*  
16%

### Yarn Dyed Boxer Shorts - JH43

65% Cotton | 35% Polyester. Size: Small - 5XL  
Colours may vary. **\*£12 EACH - 2 FOR £20**

WAIST  
SIZES

	S	M	L	XL	2XL	3XL	4XL
INCH	30-32	33-35	36-39	40-42	43-45	46-48	49-51
CM	76-81	84-89	91-99	102-107	109-114	117-122	124-130

CHEST  
SIZES

	S	M	L	XL	2XL	3XL	4XL
INCH	34-36	37-39	40-42	43-45	46-47	48-50	52-54
CM	86-91	94-99	102-107	109-114	117-119	122-127	132-137

CALL to order 0303 031 0310

50

ONLINE orders [www.jolliman.co.uk](http://www.jolliman.co.uk)



# SAVE UP TO 00% ON OUR SOCK COLLECTION

## Thick Thermal Wool Socks 3 Pack - JI329

Lamb's Wool Blend. Cushion foot and smooth toe seam. Unique stitching ensures no slipping down when stretched around calf. Size: 6-11.

*Lambs Wool!*



3 PAIRS

WAS £12  
NOW £10

SAVE  
16%



THERMAL  
WARMTH



## WINTER SALE

## WINTER SALE

## WINTER SALE

## WINTER SALE

## Lamb Wool Lycra Socks - JI321

55% Acrylic, 25% Wool, 18% Polyester 2% Elastane Lycra  
Size: 6-11

WAS £12  
NOW £10

SAVE  
16%

3 PAIRS



CALF  
LENGTH

## Knee Length Lamb Wool Lycra Socks - JI322

55% Acrylic, 25% Wool 18% Polyester 2% Elastane Lycra  
Size: 6-11

WAS £14  
NOW £12

SAVE  
14%

3 PAIRS



KNEE  
LENGTH

## Gentle Grip Black Socks - JI290

Cotton rich men's plain black socks. Perfect for everyday wear.  
Size: 6-11 or 12-14

WAS £9  
NOW £8

SAVE  
11%

3 PAIRS



CALF  
LENGTH

## Cotton Knee High Socks JI325

100% Cotton.  
Size: 6-11.

WAS £12  
NOW £8

SAVE  
33%

3 PAIRS



KNEE  
LENGTH

## Calf Length Blue Socks JI307

Various Blue  
Size: 6 to 11 or 12-14

BEST PRICE

ONLY  
£10

3 PAIRS



CALF  
LENGTH

## Argyle Pattern Socks - JI248

Colours:  
Blue & Grey  
Size: 6-11.

WAS £9  
NOW £8

SAVE  
11%

3 PAIRS



CALF  
LENGTH

## WINTER SALE

## WELL-BEING SOCKS

## WINTER SALE

## Copper Compression Socks - JN634

Copper-infused for healing. Breathable, stretchable with odour control. 2% Spandex for comfort. One Size.



1 PAIR



WAS £12  
NOW £10

SAVE  
16%

## EXTRA WIDE

## Diabetic Socks - JI323

Extra wide. Non binding, stays up and comfort fit with hand linked toe seam.  
Colours: May vary. Size: 6-11.

WAS £12  
NOW £10

SAVE  
16%

3 PAIRS



# LOW PRICES ON OUR MENS ACCESSORIES!

ONLY  
£13



## Lenny Trapper Men's Hat - JJ72

Wax Trapper with Faux Fur lining.  
Colour: **Black**  
Size: One Size

ONLY  
£14



## Dean Bakerboy Cap - JI336

Wide crown. Made of eight panels. Stitched with a button on the top.  
Colour: **Green Multi Check**  
Sizes: 58cm or 60cm

WAS £8  
NOW £10

SAVE  
20%



## Flat Cap - JJ22

Made from wool-mix tweeds. Shower resistant. Fully lined for extra insulation. Constructed for long-lasting wear.

### WINTER SALE

ONLY  
£10



## Fleece Lined Thermal Gloves - JI331

Men's 2.3 tog thermal gloves, double insulated for extra warmth.  
Colour: **One Colour** Size: One Size

### WINTER SALE

ONLY  
£11.99



## Arthritic Compression Gloves - JN753

Compresses hands, fingers, and wrists. Ultra comfortable fabric gives you support while retaining motion.

### WINTER SALE

ONLY  
£10



## Danny Hat - JJ71

Thinsulate lined ribbed cuff beanie hat. Outer 100% Acrylic Lining, 65% Polypropylene 35% Polyester.  
Colour: **Black**

### WINTER SALE

ONLY  
£11



## Stanford Elasticated Wrist Leather Gloves - JI287

Men's patchwork leather gloves.  
Colours: **Black & Brown**  
Sizes: S/M - M/L

### WINTER SALE

ONLY  
£9.99



## 2 In 1 Back Scratcher And Shoehorn - JN81

Durable, compact, and perfect for home or travel use.  
Colours: **Black & Stone** One Size

### WINTER SALE

ONLY  
£10



## Handkerchiefs - JI276

Pack of 10. Premium 100% cotton. These timeless accessories offer durability and softness in equal measure. (Colours May Vary)



# MENS TROUSER BRACES

Made of high-quality polyester, elastic fibre, and solid metal clips.

These braces feature a classic design that is soft to the touch and comfortable to wear, making them a necessary accessory for any gentleman.

## Spotted Braces - JI266

WAS £12  
NOW £10

SAVE  
**16%**

ONE  
SIZE



BURGUNDY

## Plain Braces - JI266

WAS £12  
NOW £10

SAVE  
**16%**

ONE  
SIZE



NAVY

## Combination Braces - JI349

WAS £12  
NOW £10

SAVE  
**16%**

ONE  
SIZE



TARTAN

Use with or without brace buttons



BLACK



NAVY



BURGUNDY



BLACK

# MENS STYLISH BELTS

WAS £12  
NOW £10

SAVE  
**16%**



## Classic Belt - JI215

Synthetic leather look with leather backing.

Colours: **Black & Brown**

M 34/36" L 38/40"

XL 42/44" 2XL 46/48"

3XL 50/52" 4XL 54/56" 5XL 58"

WAS £12  
NOW £10

SAVE  
**16%**



## 1 1/2" Wide Belt - JI219

Perfect with jeans and casual trouser. Synthetic leather look with leather backing.

Colours: **Black & Brown**

M 34/36" L 38/40" XL 42/44" 2XL

46/48" 3XL 50/52" 4XL 54/56" 5XL 58"

WAS £12  
NOW £10

SAVE  
**16%**

## STRETCH FABRIC



## Wonder-Waist Stretch Belt - JI273

Stylish and comfortable, made with stretchy elastic fabric and high-quality PU leather loop and belt end. The attractive heavy buckle design makes you stand out.

Colour: **Black**

Waist: 30 - 44" or 46 - 52"

# SAVE UP TO 21% ON OUR SLIPPER COLLECTION



SAVE  
10%

WAS £30 NOW £27

## Wool Mix Thermal Lining Moccasin Slipper - JL170

Genuine suede moccasin slipper, wool lining, cushioned insole, and TPR outdoor sole. Colours: **Navy & Camel**  
Size: 6, 7, 8, 9, 10, 11, 12



SAVE  
6%

WAS £32 NOW £30

## Harlequin Slipper - JD267

Multi velour slipper.  
Vulcanised rubber sole.  
Colours: **One Colour**  
Size: 6, 7, 8, 9, 10, 11, 12, 13



WINTER SALE

WINTER SALE

WINTER SALE

WINTER SALE



SAVE  
16%

WAS £24 NOW £20

## Velour Touch Fastening Slipper - JL137 Navy blue Velour.

Touch fastening slipper Textile covered injected PVC sole.  
Colours: **Navy** Size: 6, 7, 8, 9, 10, 11, 12



SAVE  
16%

WAS £18 NOW £15

## Luxury Full Slippers Navy Check - JL147

Men's cosy full slippers. Checked upper design.  
Two tone style twin gussets. Suitable for outdoors.  
Colours: **Check Navy**  
Size: 6, 7, 8, 9, 10, 11, 12

CALL to order 0303 031 0310

54

ONLINE orders [www.jolliman.co.uk](http://www.jolliman.co.uk)



# SAVE UP TO 21% ON OUR SLIPPER COLLECTION



**WIDE**  
*Fitting*

**SAVE**  
**13%**

**WAS £29 NOW £25**

## Multi Touch Fasten Comfort Slippers - JLI40

Superwide fitting. Memory foam sock. Textile sided & stitched sole. Colour: **Black**  
Size: 6, 7, 8, 9, 10, 11, 12



**SAVE**  
**14%**

**WAS £21 NOW £18**

**Dunlop Ribbed Velour Mule Slipper - JLI45** Black ribbed velour mule slipper. Textile covered TPR sole. Colour: **Black**  
Size: 6, 7, 8, 9, 10, 11, 12



**WINTER SALE**

**WINTER SALE**

**WINTER SALE**

**WINTER SALE**



**SAVE**  
**11%**

**WAS £17 NOW £15**

## Velour Slippers - JLO2

Elastic twin gusset. PVC sole. Velour upper, felt lined & PVC textile. Colours: **Navy & Black**  
Size: 6, 7, 8, 9, 10, 11, 12, 13, 14



**ONLY**  
**£20**

**GREAT VALUE**

## Check Velour Slippers Brown - JD268 Navy - JD368

Check velour twin gusset slipper. Textile covered injected PVC sole. Colours: **Brown & Navy**  
Size: 6, 7, 8, 9, 10, 11, 12, 13, 14



**CALL to order 0303 031 0310**

**55**

**ONLINE orders [www.jolliman.co.uk](http://www.jolliman.co.uk)**



# SAVE UP TO 21% ON OUR SLIPPER COLLECTION



ONLY  
£17

**BEST PRICE**

## Textured Knit Slippers - JL142

Mens cosy full slippers. Textured knit uppers. Easy slip on double elasticated gusset. Warming fleece lining. Durable sole. Colours: **Brown**  
Size: 6, 7, 8, 9, 10, 11, 12



FLEECE  
LINING



ONLY  
£21

**GREAT VALUE**

## Navy Check Velour Slip On Slipper - JL160

Navy check velour. Twin gusset. Memory foam sock textile lining. Textile covered sole. Colour: **Navy**  
Size: 6, 7, 8, 9, 10, 11, 12, 13, 14



MEMORY  
FOAM

**WINTER SALE**

**WINTER SALE**

**WINTER SALE**

**WINTER SALE**



ONLY  
£18

**GREAT VALUE**

## Tweed Textile Moccasin Style Slipper - JL166

Moccasin style slipper with terry lining & sock. Textile covered TPR sole. Colour: **Grey & Brown**  
Size: 6, 7, 8, 9, 10, 11, 12



WARM TERRY  
LINING



SAVE  
21%

WAS £23 NOW £18

## Navy Check Fleece Lined Slipper - JD264

Textile twin gusset slippers. Fleece lining with PVC sole. Colours: **Navy Check**  
Size: 6, 7, 8, 9, 10, 11, 12



FLEECE  
LINING

CALL to order 0303 031 0310

56

ONLINE orders [www.jolliman.co.uk](http://www.jolliman.co.uk)



# SAVE UP TO 19% ON MENS SMART BOOTS

SAVE  
10%



MEMORY  
FOAM



ZIPPED  
FASTENING

## Herringbone Textile/Leather Boots - JD280

Featuring an exquisite herringbone pattern on the textile upper, these shoes blend rich tan and brown hues for a versatile look. Crafted from premium leather and high-quality textile, they offer durability and a comfortable, supportive fit. The sturdy sole provides reliable traction on city streets and rugged terrain.

Colour: **Tan/Brown**  
Size: 6, 7, 8, 9, 10, 11, 12

WAS £70 NOW £63



100%  
GENUINE  
LEATHER

WINTER SALE

WINTER SALE

WINTER SALE

WINTER SALE



SAVE  
19%



SAVE  
12%



100%  
GENUINE  
LEATHER



THERMAL  
LINED

WAS £62 NOW £50

## Thermal Lined Zippered Boot - JD164

The Black Leather Twin Zip Thermal Lined Boot blends style and warmth. With a sleek black leather exterior, twin zip design for easy wear, thermal and faux fur lining for warmth, and a TR grip sole for reliable traction, these boots offer both fashion and functionality. Colour: **Black**

Size: 6, 7, 8, 9, 10, 11, 12



100%  
GENUINE  
LEATHER



THERMAL  
LINED

WAS £63 NOW £55

## High Top Zip Thermal Lined Boots - JD244

Stay warm and stylish with our Twin Zip Thermal Lined Men's Black Leather Boot. Faux fur lining provides exceptional warmth, while the thermal lining ensures cosy feet in cold weather. The twin zip design allows for easy on and off. Perfect for blending practicality with superior comfort. Colour: **Black**

Size: 6, 7, 8, 9, 10, 11, 12

# SAVE ON OUR FORMAL COLLECTION



## Tan Leather/Checked Brogue Oxford Shoes - JD308

This stylish Oxford shoe features a tan leather and checked textile upper with a classic 4-eyelet wing brogue design. It offers a comfortable fit with textile and PU lining, and a memory foam sock for added cushioning. The shoe is finished with a durable Tunit sole, perfect for all-day wear.

Colour: **Tan Leather**

Size: 6, 7, 8, 9, 10, 11, 12

SAVE  
12%

WAS £63 NOW £55

WINTER SALE

WINTER SALE

WINTER SALE

WINTER SALE



SAVE  
8%

WAS £45 NOW £41

## Smart Slip On Loafers - JD251

Centre gusset loafer. Textile lining. PU padded sock. TPR sole. Colours: **Black & Brown**  
Size: 6, 7, 8, 9, 10, 11, 12



SAVE  
7%

WAS £26 NOW £24

## Lace Up Casual Shoe - JD136

Apron 4 eye tie shoe, man-made upper, natural man-made/textile lining, PU sole. Colour: **Black**  
Size: 6, 7, 8, 9, 10, 11, 12

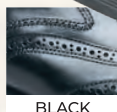


SAVE  
7%

WAS £26 NOW £24

## Slip On Casual Shoe - JD135

Casual slip on shoe with rugged grip sole looks great either casual or smart. Man-made upper and sole. Colour: **Black** Size: 6, 7, 8, 9, 10, 11, 12



BLACK



SAVE  
11%

WAS £45 NOW £40

## Leather Oxford Shoes - JD139

Leather Oxford Brogue with foam padded vamp. Cushion insole and PVC sole. Colours: **Black & Brown**  
Size: 6, 7, 8, 9, 10, 11, 12

CALL to order 0303 031 0310

58

ONLINE orders [www.jolliman.co.uk](http://www.jolliman.co.uk)



# SAVE ON OUR LEISURE COLLECTION

SAVE  
£13

TAN



## Easi-Zip Leisure Shoe - JD310

The Easi-Zip Leisure Shoe blends style and convenience with a six-eyelet lace design and side zipper for easy wear. A padded textile lining ensures comfort, while the durable TPR sole provides grip and flexibility, perfect for everyday use.



Colours: **Tan & Navy**

Size: 6, 7, 8, 9, 10, 11, 12

RRP £55 NOW £42



NAVY



WINTER SALE

WINTER SALE

WINTER SALE

WINTER SALE

SAVE  
21%



TOUCH  
FASTENING



SAVE  
19%

RRP £26 NOW £21

## Triple Touch Fastening Casual Shoe - JD313

Navy Textile Triple Touch Fastening Casual Shoe. Padded collar. TPR sole.

Colour: **Navy** Size: 7, 8, 9, 10, 11, 12



**WIDE**  
*Fitting*

RRP £38 NOW £30

## Touch Fastening Leisure Shoe - JD311

Touch Fastening Leisure Shoe. Textile lining.

Dual fitting removable in-sock.

TPR sole. Synthetic Nubuck/Microfibre.

Colours: **Black & Brown** Size: 6, 7, 8, 9, 10, 11, 12



SAVE  
26%

RRP £30 NOW £22

## Navy Lace Leisure Shoe - JD312

Navy Textile 5 Eye Leisure Shoe. Padded collar. TPR sole. Colour: **Navy** Size: 6, 7, 8, 9, 10, 11, 12

CALL to order 0303 031 0310

59

ONLINE orders [www.jolliman.co.uk](http://www.jolliman.co.uk)

# TIMELESS WINTER STYLE

# GREAT VALUE DEALS!

ONLY  
£40

TAUPE

## Suede Comfort Slip On Shoe - JD169

Crafted from real suede, this slip-on features a twin gusset design for easy wear. The TPR sole provides reliable traction, whether you're running errands or enjoying leisurely strolls, these slip-ons offer both versatility and comfort for any occasion.

Colours: **Taupe & Black**

Size: 6, 7, 8, 9, 10, 11, 12

**GREAT VALUE**



BLACK

WINTER SALE

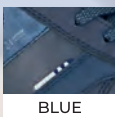
WINTER SALE

WINTER SALE

WINTER SALE

ONLY  
£39

ONLY  
£39



BLUE

**BEST PRICE**



SUPER  
LIGHTWEIGHT

**BEST PRICE**

## Two Tone Lace up Leisure Trainer - JD301

Step into style and comfort with these 6-eye, 2-tone leisure trainers. With a cosy textile lining, they ensure a soft feel with every stride. The TPR sole offers durability and stability, perfect for all your daily adventures.

Colours: **Brown & Blue**

Size: 6, 7, 8, 9, 10, 11, 12

## Premium Lace Up Leisure Shoe - JD300

These 6 eye lace leisure shoes offer a blend of style and comfort. Featuring a textile lining and sock, they provide a soft and cosy feel with every step. The TPR sole ensures durability and stability, making them perfect for all-day wear.

Colour: **Brown**

Size: 6, 7, 8, 9, 10, 11, 12

CALL to order 0303 031 0310

60

ONLINE orders [www.jolliman.co.uk](http://www.jolliman.co.uk)



# LOW PRICES ON OUR LEISURE COLLECTION

SAVE  
£6

NAVY

## Superlight Lace Up Leisure Shoe - JD283

This 3-eyelet leisure shoe features a comfortable leather sock and a super lightweight TPR/Phylon sole for optimal support and durability. The shoe also has a stylish striped textile lining. Perfect for any outdoor activities or leisure time.

Colours: **Beige & Navy**

Size: 6, 7, 8, 9, 10, 11, 12

WAS £62 NOW £56

BEIGE



WINTER SALE

WINTER SALE

WINTER SALE

WINTER SALE

ONLY  
£40

SAVE  
9%

WAS £42 NOW £38

NAVY



TOUCH  
FASTENING

## Touch Fastening Comfort Sole Shoe - JD170

Synthetic Nubuck. Touch fastening. Textile/mesh lining. PU sock. TPR sole. Colours: **Navy & Tan** Size: 6, 7, 8, 9, 10, 11, 12

SAVE  
7%

WAS £40 NOW £37

TAN



TOUCH  
FASTENING

**GREAT VALUE**

## Easi-Fasten Smart Casual Shoe - JD61

Easy-clean leather look uppers & leather lining. Touch fastening for width adjustment. PU sole.

Colours: **Black & Brown** Size: 6, 7, 8, 9, 10, 11, 12

## Cushion Comfort Sole Slip On - JD166

Twin gusset casual, textile/mesh lining PU sock, TPR sole. Colours: **Grey & Tan** Size: 6, 7, 8, 9, 10, 11, 12

CALL to order 0303 031 0310

61

ONLINE orders [www.jolliman.co.uk](http://www.jolliman.co.uk)

**SAVE UP TO 18% ON OUR LEISURE COLLECTION**

**SAVE  
13%**

BROWN

**Memory Foam Leisure Shoe - JD265**

Memory Foam Leisure Shoe with apron 3-eye tie design for a classic look. Features a soft textile lining and a comfort memory foam sock for superior cushioning. The durable TPR sole ensures flexibility and grip, making it ideal for all-day comfort and casual wear.

Colours: **Navy & Brown**

Size: 6, 7, 8, 9, 10, 11, 12

**WAS £45 NOW £39**

NAVY



MEMORY  
FOAM

**WINTER SALE**

**WINTER SALE**

**WINTER SALE**

**WINTER SALE**

**SAVE  
18%**

**SAVE  
9%**



TOUCH  
FASTENING

**PADDED  
UPPER**



SUPER  
LIGHTWEIGHT



SUPER  
LIGHTWEIGHT

**WAS £22 NOW £18**

**WAS £22 NOW £20**

**Touch Fastening Deck Shoe - JD62**

Navy Deck Shoes with touch fastening for easy wear, a padded upper for added comfort, and a cosy check textile lining. The textile-covered injected PVC sole offers durability and flexibility, making these slippers ideal for both indoor and outdoor use, providing all-day comfort.

Colour: **Navy** Size: 6, 7, 8, 9, 10, 11, 12

**Navy Denim Canvas Twin Gusset Slip On - JD165**

Canvas Twin Gusset Slip-On shoes with a padded upper for extra comfort. Featuring a stylish check textile lining and a durable textile-covered injected PVC sole for flexibility and grip. These versatile shoes are perfect for everyday wear, offering comfort and ease.

Colours: **Navy** Size: 6, 7, 8, 9, 10, 11, 12

**CALL to order 0303 031 0310**

62

**ONLINE orders [www.jolliman.co.uk](http://www.jolliman.co.uk)**



roamers

# WIDE-FIT COLLECTION

SAVE  
£5

BLACK

## Superlight Lace Up Shoe - JD189

Extra wide fitting soft leather, light-weight lace up shoe. Leather upper and lining with polyurethane sole.

Colours: **Black & Brown**

Size: 6, 7, 8, 9, 10, 11, 12

WAS £75

NOW £39

**WIDE**  
*Fitting*

BROWN



SUPER  
LIGHTWEIGHT



GENUINE  
LEATHER

WINTER SALE

WINTER SALE

WINTER SALE

WINTER SALE

## Slip On Shoe - JD154

Extra wide twin gusset casual, leather/textile lining & sock, 3 in 1 fitting system, 2 removable insoles, ideal for orthotics.

Colour: **Black & Tan**

Size: 6, 7, 8, 9, 10, 11, 12, 13, 14

BEST PRICE

TAN

ONLY  
£58

**WIDE**  
*Fitting*

BLACK



GENUINE  
LEATHER

CALL to order 0303 031 0310

63

ONLINE orders [www.jolliman.co.uk](http://www.jolliman.co.uk)



ONLY  
£58

**BEST PRICE**

**Touch Fastening Tramline  
Casual Shoe - JD296**

Extra wide touch fastening. Leather quarter lining & sock. Super lightweight. Deep toe box. PU sole. Colours: **Black**  
Size: 7, 8, 9, 10, 11, 12



**WIDE**  
*Fitting*

ONLY  
£58

**GREAT VALUE**

**Wide-fit Touch Fasten Shoe - JD212**

Extra-wide fit black leather shoes. Featuring elasticated front, soft leather lining and cushioned insole. the perfect blend of elegance and support for prolonged wear. Colours: **Black**  
Size: 6, 7, 8, 9, 10, 11, 12,



**roamers**

**WIDE-FIT COLLECTION**

**WIDE**  
*Fitting*

ONLY  
£58



**GREAT VALUE**



**Extra Wide Lace Up Shoe - JD223**

Extra wide 4 eye lace to toe. Leather/textile lining. Leather sock. 3-in-1 fitting system with PU sole.  
Colours: **Black** Size: 7, 8, 9, 10, 11, 12



ONLY  
£58

**BEST PRICE**

**Comfort Leather Shoe - JD294**

Waterproof membrane. Fuller fitting Super lightweight. Textile lining & leather sock. PU sole. Colours: **Black**  
Size: 6, 7, 8, 9, 10, 11, 12,



# roamers

## WIDE-FIT COLLECTION

SAVE  
£5

BROWN

### Softie Touch Fastening Casual Shoe - JD295

Extra wide touch fastening. Leather quarter lining & sock. Super lightweight. Deep toe box. 2 removable insoles. Ideal for Orthotics. PU air system sole.

Colour: **Black & Brown**

Size: 6, 7, 8, 9, 10, 11, 12, 13, 14, 15

WAS £60

NOW £55



**WIDE**  
*Fitting*



BLACK

## GREAT SAVINGS on WIDE-FIT SHOES

### Superlight Touch Fasten Shoe - JD143

Extra wide fitting soft leather, light-weight touch fastening. Leather upper and lining with polyurethane sole. Colours: **Black & Brown**

Size: 6, 7, 8, 9, 10, 11, 12

BLACK

SAVE  
£5

**WIDE**  
*Fitting*



BROWN

CALL to order 0303 031 0310

65

ONLINE orders [www.jolliman.co.uk](http://www.jolliman.co.uk)

# MENS COMFORT TRAINERS AT LOW PRICES!

SAVE  
£7



BLACK

WHITE

**HI-TEC®**

**Timeless Comfort**

**Lightweight Trainer - JD286**

This precision-crafted lightweight trainer offers style and versatility for your active lifestyle. The Timeless Comfort Lightweight Trainer is perfect for the gym, jogging, or a stroll around town.

Colours: **White & Black**

Size: 6, 7, 8, 9, 10, 11, 12, 13, 14, 15, 16

WAS £65

NOW £58



WINTER SALE

WINTER SALE

WINTER SALE

WINTER SALE

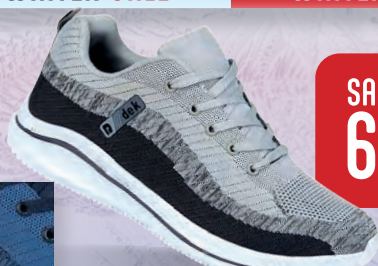


SAVE  
8%

WAS £35 NOW £32

**Superlight Lace Up Sports Trainer - JD222**

Mesh lace up trainers. Memory foam sock. Mesh textile lining. Phylon midsole inserts. Colours: **Black & Navy**  
Size: 7, 8, 9, 10, 11, 12



SAVE  
6%

WAS £32 NOW £30

**Memory Foam Superlight Trainer - JD288**

Superlight 5 eye lace design. Memory foam sock. Textile lining. Lightweight phylon sole. Colours: **Grey & Blue** Size: 6, 7, 8, 9, 10, 11



SAVE  
6%

WAS £32 NOW £30

**Black Cushion Heel Trainers - JD249**

Lace Up 7 eyelets. PU upper. Mesh lining. Textile insole. TPR rubber sole. Colours: **Black**  
Size: 6, 7, 8, 9, 10, 11, 12



SAVE  
10%

WAS £30 NOW £27

**Twin Stripe Lace Trainer - JD297**

PU twin stripe lace trainer with TPR sole. Colours: **Navy & White**  
Size: 6, 7, 8, 9, 10, 11, 12

CUSHIONED  
HEEL



SUPER  
LIGHTWEIGHT

WHITE

CALL to order 0303 031 0310

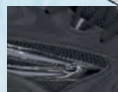
66

ONLINE orders [www.jolliman.co.uk](http://www.jolliman.co.uk)



# TIMELESS WINTER STYLE

# EFFORTLESS SAVINGS



BLACK

SAVE  
6%

WAS £32 NOW £30

## Comfort Lace Up Walking Trainer - JD271

PU/Textile Trainer. PVC sole.  
Colours: **White/Navy & Black**  
Size: 7, 8, 9, 10, 11, 12, 13



SUPER  
LIGHTWEIGHT



WHITE

SAVE  
10%

WAS £30 NOW £27

## Touch Fasten Trainer - JD142

Touch fastening velcro trainers  
with PVC sole.  
Colours: **Black & White**  
Size: 6, 7, 8, 9, 10, 11, 12



TOUCH  
FASTENING



SAVE  
6%

WAS £32 NOW £30

## Velcro Memory Foam Comfort Trainer - JD266

Textile lining. Comfort memory foam sock.  
Lightweight phylon sole.  
Colours: **Navy** Size: 6, 7, 8, 9, 10, 11, 12, 13



TOUCH  
FASTENING



MEMORY  
FOAM



BLACK

SAVE  
10%

WAS £30 NOW £27

## Lace Up Trainer - JD180

Leather, lace trainer textile lining &  
sock. TPR sole.  
Colours: **Black & White**  
Size: 6, 7, 8, 9, 10, 11, 12



100%  
GENUINE  
LEATHER

WINTER SALE

WINTER SALE

WINTER SALE

WINTER SALE

ONLY  
£45

WHITE



BLACK

## Touch Fastening Leather Trainer - JD285

Crafted from coated action  
leather and PU, this trainer exudes  
durability and style in equal  
measure. Its non-marking TPR sole  
ensures impeccable traction.

Colours: **Black & White**  
Size: 6, 7, 8, 9, 10, 11, 12, 13, 14

BEST PRICE



100%  
GENUINE  
LEATHER

CALL to order 0303 031 0310

67

ONLINE orders [www.jolliman.co.uk](http://www.jolliman.co.uk)

# SAVE UP TO 15% ON OUTDOOR FOOTWEAR

**HI-TEC®**



GREY



RUGGED  
GRIP SOLE



SAVE  
10%

WAS £65 NOW £58

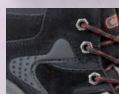
## Men's Jaguar Hi-Tec Trail Shoe - JD262

Breathable mesh upper and EVA midsole for cushioning and support, robust lugged outsole allows for grip on rough ground. Perfect for uneven terrains.

Colours: **Black & Grey** Size: 7, 8, 9, 10, 11, 12, 13



RUGGED  
GRIP SOLE



BLACK



GREY



SAVE  
8%

WAS £34 NOW £31

## Classic Lace Up Trek & Hiking Boot - JD174

Black synthetic nubuck/ textile 6 eyelet mid trek & trail boot. Colours: **Black, Grey & Khaki**

Size: 6, 7, 8, 9, 10, 11, 12, 13, 14



RUGGED  
GRIP SOLE



WAS £32 NOW £30

## Triple Fastening Trek Shoe - JD63

3 touch fastening adjustable comfort sandal. Super comfort deluxe padded suede sock with PU sole.

Colour: **Black, Grey & Brown**

Size: 6, 7, 8, 9, 10, 11, 12

## FULL LENGTH

SAVE  
£5

WAS £70

NOW £65



## Toggle Tie Thermal Lined Wellington - JD309

Toggle tie top. Fleece insulated lining. Rubber sole. Colours: **Green & Black**

Size: 4, 5, 6, 7, 8, 9, 10, 11, 12

## FULL LENGTH

SAVE  
15%

WAS £32

NOW £27



## Dunlop Wellington - JD148

Full length Wellington with black PVC cleated sole.

Colours: **Green & Black**

Size: 4, 5, 6, 7, 8, 9, 10, 11, 12, 13

## HALF LENGTH

ONLY  
£21

BEST  
PRICE



## Dunlop Half Wellington - JD213

Half length Wellington. Avg. 23cm High Leg. Colours: **Green & Black**

Size: 4, 5, 6, 7, 8, 9, 10, 11, 12

CALL to order 0303 031 0310

68

ONLINE orders [www.jolliman.co.uk](http://www.jolliman.co.uk)