

Jolliman

FAMILY RUN SINCE 1946

Free
DELIVERY*
*£60 minimum spend.

Derbyshire Polo Shirt - JB260

Classic polo shirts have become a traditional part of a man's wardrobe. Styled with a classic regular fit, horizontal coordinating stripes and contrasting trim on the placket collar and arm trim. 100% Polyester.

Colours: **Brown, Blue, Beige & Navy**

M 38/40" L 42/44"

XL 46/48" 2XL 50/52"

***Buy 1 for £17 EACH or**

Buy 2 for £14 EACH!

FROM

£14*

BUY
2

SAVE
£6



BLUE

BEIGE

NAVY

Big Summer SALE

www.jolliman.co.uk Call 0303 031 0310



WAS £30
£25

SAVE 16%

Free Travel Tube included!

Panama Style Hat - JJ30
Made from natural fibres. Folds for easy packing and storage. Colour: **Stone**
Size (circumference):
S 57cm - M 58cm - L 59cm - XL 60cm

Take advantage of our money-saving **Multi-buy Offers**, which also let you **Mix & Match** selected items!

Look out for this logo

Mix & Match

Also... Did you know?

We also have an extensive **Home & Garden Range!**

Get in touch and request a **Free Catalogue** today!



Go directly to the request page!
Use the camera app on your smart phone and **Scan the QR code.**

Via our website:
jolliman.co.uk/request-a-catalogue

Phone: **0303 031 0320**

Contents

Menswear **03 - 50**

Nightwear **51 - 55**

Underwear & Socks **56 - 57**

Accessories **58 - 60**

Slippers **61 - 63**

Sandal & Shoes **64 - 77**

Essentials *Top Picks!* **78 - 79**

DELIVERY DETAILS

Standard UK Mainland Delivery: £5.99 - If you select standard delivery our normal delivery time for items in stock is up to 7-10 days. In most cases items are delivered before this time frame. Items delivered directly from the manufacturer may take a little longer. In exceptional circumstances please allow 28 days for delivery.

Express UK Mainland Delivery: £11.99 - For an additional fee we offer an Express Delivery service of 2 working days for items in stock. This excludes weekends and Bank Holidays. Please note that items that are despatched directly from the manufacturer are not available on the express service. If this applies you will not be given the option of the express service at checkout. Orders must be placed before 1pm, Monday-Friday for same day despatch. *This service is not available to the following areas/postcodes: Scottish Highland & Islands - IV, HS, KA27 - KA28, KW, PA20 - PA49, PA60 - PA78, PH17 - PH26, PH30 - PH44, PH49 - PH50, ZE - Northern Ireland - BT, Isle of Man - IM, Isles of Scilly - TR21 - TR25, Guernsey - GY - Jersey - JE. Express orders are usually despatched within 1-2 days but please allow up to 7 days for delivery. Shipping outside the UK: Europe is £19.99. Rest of the World is £40. Please note that we will not ship to P.O. Box addresses. If you have placed an order that you would like shipped to a P.O. Box we reserve the right to cancel the transaction and will issue you with a refund. Should you not receive your parcel after 14 days please contact us immediately, before expiration of 28 days so we can contact our carrier. Failure to inform us within 28 days from the date of order will make null and void any claim against Jolliman for non receipt of goods.

Returns: In the unlikely event that you are not entirely happy with your purchase, please return your goods unworn, unwashed, and with the manufactures tags attached in the original packaging within 14 days of receipt. If goods are returned after 14 days and/or are not returned in the condition which you received them, we reserve the right to refuse such returns and exchanges. This does not affect your statutory rights. We don't refund the original post and packaging charge (unless the item arrives damaged/faulty) but if you just want an exchange then you don't pay postage for the replacement sent out. Please note, returns can take up to 14 days to be processed. If you have any queries regarding a return, please contact the customer care team. In most cases, refunds are issued back to the original payment method used, however, if your order was placed by cheque, a credit note will be issued for the any product that is returned. This credit can be used against any order you place with Jolliman in the future.

Substitutes: In the unlikely event that an item you order is out of stock, we will provide you with the next best alternative as a substitute.

MEDIA CODE: M263

Linen-Look Expanding Waist Trousers - JA181

Made from a special melange effect polyester fabric that not only adds a touch of elegance but also ensures breathability. Equipped with a shirt-gripping waistband, two side pockets, two back pockets with buttons and a front coin pocket. Experience the perfect blend of comfort and style.

Colours: **Stone & Cream**

Waist: 32" 34" 36" 38" 40" 42" 44" 46" 48"

Leg: Extra Short (27") Short (29") Regular (31")

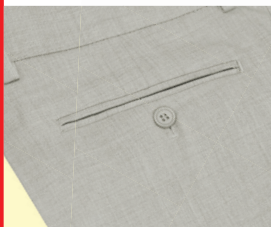
***Buy 1 for £25 EACH or Buy 2 for £22 EACH!**

FROM
£22*

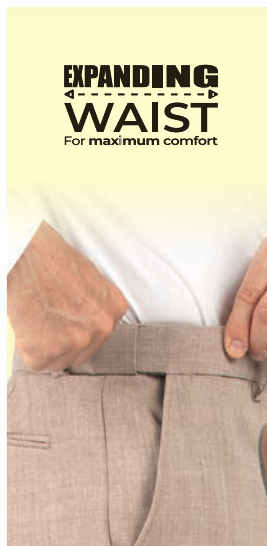
BUY
2
SAVE
£6



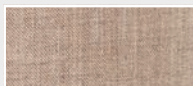
**2 Slanted
Side Pockets**



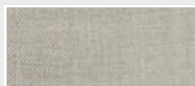
**2 Buttoned
Back Pockets**



**Adjustable Fit
Expanding Waistband**



STONE



CREAM

**LEG
SIZE**

**UP TO
31"**



**LINEN-LOOK
FABRIC**

**SUPERIOR
CREASE**

**extra £7
per trouser**

Call to order **0303 031 0310**

3

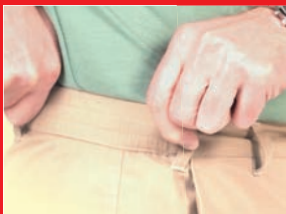
Online **www.jolliman.co.uk**

ONLY
£25

**BEST
PRICE**

**WAIST
SIZE**

**UP TO
46"**



**EXPANDING
WAIST**
For maximum comfort

Multi Pocket Shorts - JA88

These shorts boast multiple pockets and an elasticated waistband, ensuring unparalleled comfort and functionality. They are crafted from high-quality, machine-washable fabric for easy maintenance and long-lasting wear. This innovative design caters to the demands of modern life, providing a practical and stylish solution to everyday dressing. 65% Polyester | 35% Cotton.

Colours: **Khaki, Navy & Stone**

Waist: 32" 34" 36" 38" 40" 42" 44" 46"

8

**MULTI-USE
POCKETS**



**2 Slanted
Side Pockets**



**2 Zipped
Back Pockets**



NAVY



KHAKI



STONE



**MULTI
POCKET**



BUY ANY 2 POLO SHIRTS FROM £14 EACH!

1. Ashbourne Polo Shirt - JB262

Sophisticated all-over design complemented by contrasting details and a chest pocket.

Classic design, stylish placket and collar, and chest pocket.

75% Polyester | 25% Cotton.

Colours: **Wine, Grey, Beige & Blue**

M 38/40" L 42/44" XL 46/48" 2XL 50/52"

***Buy 1 for £17 EACH or Buy 2 for £14 EACH!**

UP TO
2XL

FROM
£14*

BUY **2** SAVE **£6**



WINE



GREY



BEIGE



BLUE



Mix & Match



Pattern Detail

Chest Pocket



2. Horizontal Design Polo Shirt - JB226

Styled with a classic regular fit, horizontal coordinating stripes and contrasting trim on the placket collar and arm trim. This polo shirt is a stylish and versatile choice for any wardrobe.

Colours: **Blue, Grey & Teal**

Size: M 38/40" L 42/44" XL 46/48" 2XL 50/52"

***Buy 1 for £17 EACH or Buy 2 for £14 EACH!**

UP TO
2XL

FROM
£14*

BUY **2** SAVE **£6**



BLUE



GREY



TEAL

CASMAL TROUSERS FROM £22 EACH!

FROM
£22*

NEW

BUY
2

SAVE
£6

CASMAL Flexi-Waist Trousers - JA188

*Wear anywhere and
everywhere!*

Casual meets Formal with our
**NEW 'Casmal' Flexi-Waist
Trousers.** Featuring a drawstring
tie, button fastening, and 1/2
elasticated back for the perfect fit.
With 2 buttoned back pockets and
a comfort fit. 100% Polyester.

Colours: **Salmon, Stone & Sky**

Waist: 32" 34" 36" 38"

40" 42" 44" 46" 48"

Leg: Extra Short (27")

Short (29") Regular (31")

***Buy 1 for £25 EACH or
Buy 2 for £22 EACH!**

**WAIST
SIZE**

**UP TO
48"**

**ELASTICATED
◀WAIST▶**
Pull-on and go!

SKY


**DRAWSTRING
WAIST**

STONE

SALMON



*Textured
Detail*

Call to order **0303 031 0310**

6

Online **www.jolliman.co.uk**

SAVE UP TO 20% ON MULTI-BUY OFFERS!

1. Poole Short Sleeve Shirt - JB199

Single chest pocket and a straight hem, ideal choice for both casual and formal occasions. Crafted using the yarn dyeing technique. High-quality materials and precise construction provide durability and comfort. 65% Polyester | 35% cotton.

Colours: **Blue & Red**
Size: M 40" L 42/44" XL 46"
2XL 48" 3XL 50/52"

***Buy 1 for £20 EACH or
Buy 2 for £16 EACH!**

Champion.

FROM
£16*

BUY
2

SAVE
£8



BLUE



RED



Mix & Match

Chest Pocket



2. Croyde Short Sleeve Seersucker Shirt - JB189

Its unique weave gives the seersucker fabric a crinkled texture appearance which floats the fabric above the skin to help you keep cool. The shirt also has a straight hem and a chest pocket.

65% Polyester | 35% cotton.

Colours: **Blue & Wine**
Size: M 40" L 42/44"
XL 46" 2XL 48" 3XL 50/52"

***Buy 1 for £20 EACH or
Buy 2 for £16 EACH!**

Champion.

FROM
£16*

BUY
2

SAVE
£8



BLUE



WINE

Call to order **0303 031 0310**

7

Online **www.jolliman.co.uk**

BUY ANY 2 SHORT SLEEVE SHIRTS

1. Tattersall Short Sleeve Shirt - JB10

Traditional English check design combined with extreme comfort, it's easy to see why these Tattersall short sleeve check shirts with a single breast pocket are a firm favourite.

65% Polyester | 35% Cotton.
Colours: **Blue, Red & Green**
Size: M 40" L 42/44" XL 46"
2XL 48" 3XL 50/52"

***Buy 1 for £20 EACH
or Buy 2 for £16 EACH!**

Champion.

FROM
£16*

BUY
2

SAVE
£8



BLUE



RED



GREEN



Mix & Match



2. Whitby Short Sleeve Shirt - JB171

This shirt looks good whether tucked in or out. Features a straight hem and classic chest pocket. 65% polyester and 35% cotton fabric blend making this shirt lightweight and breezy.

Colours: **Blue, Navy & Red**
Size: M 40" L 42/44" XL 46"
2XL 48" 3XL 50/52"

***Buy 1 for £20 EACH
or Buy 2 for £16 EACH!**

Champion.

FROM
£16*

BUY
2

SAVE
£8



BLUE



RED



NAVY

Call to order **0303 031 0310**

Online **www.jolliman.co.uk**

FROM ONLY £16 EACH - SAVE 20%

1. Holkham Short Sleeve Checked Shirt - JB281

Designed in a regular fit with a straight hem, it features a convenient single breast pocket for your must-have essentials. 65% Polyester | 35% Cotton.

Colours: **Blue & Red**
Size: M 40" L 42/44" XL 46"
2XL 48" 3XL 50/52"

***Buy 1 for £20 EACH or Buy 2 for £16 EACH!**

Champion.

FROM
£16*

BUY
2

SAVE
£8



Mix & Match



2. Doncaster Short Sleeve Shirt - JB102

Fresh, fantastically versatile, great value short sleeved check shirts! Generously cut for comfort and ease of care in a lightweight, crease-resistant fabric. Single breast pocket. Straight hem. 65% Polyester | 35% Cotton.

Colours: **Blue, Green & Light Blue**

Size: M 40" L 42" XL 44"
2XL 46" 3XL 48"/50"

***Buy 1 for £20 EACH or Buy 2 for £16 EACH!**

Champion.

FROM
£16*

BUY
2

SAVE
£8



Call to order **0303 031 0310**

9

Online **www.jolliman.co.uk**

Men's Poplin Short Sleeve Shirt - JB180

This classic shirt features a left breast pocket for conveniently storing small essentials like pens or glasses, while its stiffened collar maintains a polished look throughout the day, providing a sharp appearance. Adjustable cuffs offer a customisable fit and versatility, ensuring both comfort and style, complemented by a straight hem that provides a clean and tailored finish, suitable for effortless tucking in or leaving out. Crafted from easy-care fabric, it resists wrinkles and maintains crispness.

65% Polyester | 35% Cotton Poplin.

Colours: **Black, Blue, White, Pink, Wine & Navy**

Size: M 40/42", L 42/44", XL 44/46",

2XL 46/48", 3XL 50/52"

***Buy 1 for £18 EACH or Buy 2 for £15 EACH!**

FROM
£15*

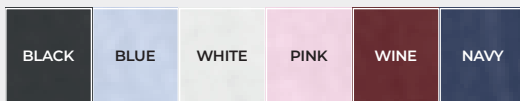
BUY
2
SAVE
£6

WHITE



Amazing Value!

Also Available In
LONG SLEEVE - JB181



Call to order **0303 031 0310**

10

Online **www.jolliman.co.uk**

WAS £20
NOW
£15

SAVE
25%

WAIST
SIZE

UP TO
60"

Quality Plus Trousers - JA01

Our versatile Quality Plus Trousers will make an indispensable addition to your wardrobe all year round, for any occasion. Classic fit styling. Easy care fabric with button & bar waist fastening, flat front, 2 side pockets and a single buttoned back pocket. Belt loops for belts 1½" wide. Machine washable.

100% Polyester.

Colours: **Grey, Navy, Fawn, Black & Brown**

Waist: 32", 34", 36", 38", 40", 42", 44",

46", 48", 50", 52", 54", 56", 58", 60"

Leg: Extra short (27")

Short (29") Regular (31") Long (33")

LEG
SIZE

UP TO
33"



2 Slanted
Side Pockets



Buttoned
Back Pocket



"I've been buying these trousers for many years. Have always been excellent quality and value."

Kathy - Eastbourne



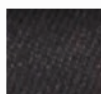
GREY



NAVY



FAWN



BLACK



BROWN

SUPERIOR
CREASE

extra **£7**
per trouser

Call to order **0303 031 0310**

Online www.jolliman.co.uk

1. Crew Neck T-Shirt - JB88

Crew neck T-shirts are the essential addition to every man's wardrobe they are simple versatile and can be worn under, layer up or just on their own.

Jolliman's Crew neck regular fit T-shirt collection in 100% pure cotton.

FROM
£6*

**BUY 3 SAVE
£6**

Colours: **Beige, Burgundy, Grey, Royal Blue, Sky, Black, Green & White**

Size: M 40" L 42/44" XL 46" 2XL 48" 3XL 50/52" 4XL 54"

***Buy 1 for £8 EACH or Buy 3 for £6 EACH!**

BLACK

WHITE

GREEN

SKY

GREY

ROYAL

BEIGE

BURGUNDY

①



AVAILABLE IN
8 COLOURS

BLACK

WHITE

GREEN

SKY

NAVY

MAROON

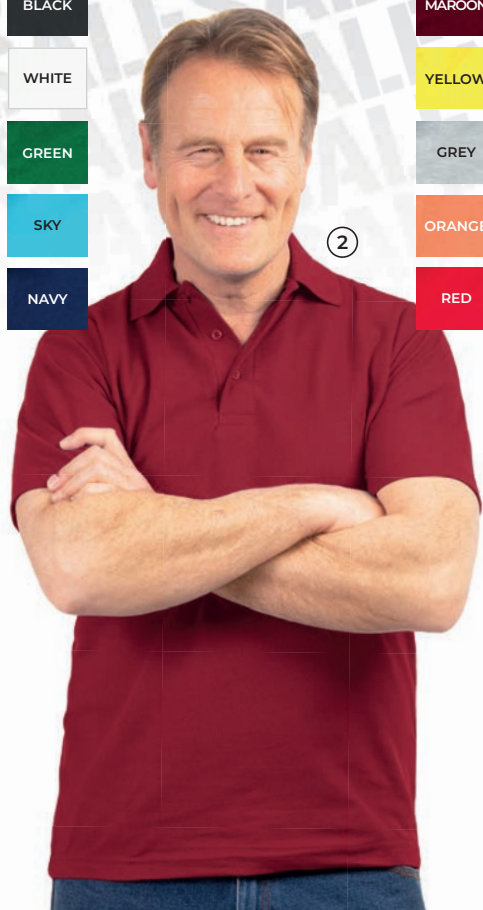
YELLOW

GREY

ORANGE

RED

②



AVAILABLE IN
10 COLOURS

2. Classic Pique Polo Shirt - JB148

Team up with your favourite shorts, jeans or chinos.

Or for those chillier days or evenings you can layer up with sweaters or simply a jacket. Generous Fit.

50% Cotton | 50% Polyester.

FROM

£10*

**BUY 2 SAVE
£4**

Colours: **Grey, White, Navy, Black, Royal Blue, Green,**

Yellow, Sky, Orange, Red and Maroon

Size: M 40" L 42/44" XL 46" 2XL 48" 3XL 50/52" 4XL 54"

***Buy 1 for £12 EACH or Buy 2 for £10 EACH!**

Call to order **0303 031 0310**

12

Online **www.jolliman.co.uk**

AVAILABLE IN 7 COLOURS



**EXPANDING
WAIST**
For maximum comfort

Walking Shorts - JA139

Our popular walking shorts are designed to offer both comfort and practicality, making them a suitable choice for leisure activities or a simple stroll in the park. Featuring an elasticated waist, which ensures a comfortable fit and ease of movement. Additionally, they are equipped with two side pockets and two button back pockets, providing ample space to store your essentials. 65% Polyester | 35% Cotton.

Colours: **Khaki, Navy, Stone, Soft Blue, Soft Green, Soft Lilac & Soft Mulberry**

Waist: 32", 34", 36", 38", 40", 42", 44", 46", 48", 50", 52", 54"

ONLY
£25

BEST PRICE

**WAIST
SIZE
UP TO
54"**



2 Buttoned
Back Pockets



2 Slanted
Side Pockets

Khaki

Navy

Stone

Soft
Blue

Soft
Green

Soft
Lilac

Soft
Mulberry



1. Drawstring Waist Cargo Shorts - JA187

Elevate your style with our Expanding Waist Cargo Shorts! Boasting a total of 6 practical pockets, a handy inner drawstring tie, reinforced durability and added belt loops.

100% Cotton.

Colours: **Navy, Khaki & Stone**

Waist: 32", 34", 36", 38", 40", 42", 44", 46", 48"

WAS £24

NOW

£21

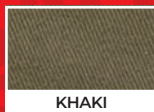
SAVE 12%

**EXPANDING
WAIST**

For maximum comfort



NAVY



KHAKI



STONE

Flapped Pockets

①

Adjustable Drawstring



100% PURE COTTON

Chest Pocket

②

2. Large Check Polo Shirt - JB326

Featuring a bold check design that adds a modern edge to a classic silhouette. Perfect for any occasion, it effortlessly elevates your look. Crafted with attention to detail, this shirt promises both style and comfort. 100% Polyester.

Colours: **Navy & Grey**

M 38/40" L 42/44"

XL 46/48" 2XL 50/52"

***Buy 1 for £13 EACH
or Buy 2 for £10 EACH!**

UP TO
2XL

FROM

£10*

BUY
2

SAVE
£6



NAVY



GREY

Call to order **0303 031 0310**

14

Online www.jolliman.co.uk

1. Sailboat Patterned Casual Polo - JB329

This charming sailboat polo features a 3-button design, contrasting knitted collar and sleeves, and a comfortable fit. The subtle sailing boat pattern adds a unique touch. 100% Polyester.

Colours: **Royal, Grey, Teal & Wine**

Size: M 40" L 42/44" XL 46"

2XL 48/50"

**POLO
SIZES**

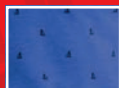
**UP TO
2XL**

WAS £23

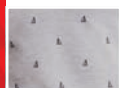
NOW

£20

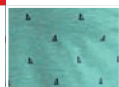
• SAVE 13%



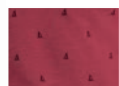
ROYAL



GREY



TEAL



WINE



*Pattern
Detail*

①

*Chest
Pocket*

②



2. Casual Horizontal Striped Polo - JB323

This eye-catching casual horizontal striped polo features a classic knitted collar with button fastening placket and a single chest pocket. Choose from 3 unique stripe patterns.

100% Polyester.

Colours: **Light Blue, Magenta, Navy & Petrol**

Size: M 40" L 42/44" XL 46"

2XL 48/50"

**UP TO
2XL**

WAS £15

NOW

£12

• SAVE 20%



GREY



BEIGE



NAVY

Call to order **0303 031 0310**

15

Online **www.jolliman.co.uk**

STYLISH SHIRT COLLARED POLOS

1. Diamond Pocket Casual Polo - JB301

Breathable poly/cotton with stretch for easy movement. Classic mesh knit on the upper body, contrasting black piping, 4 button fastening and the a breast pocket for essential items. 20% Polyester | 80% Cotton. Colours: **Light Blue, Magenta, Navy & Petrol**
Size: M 40" L 42/44" XL 46" 2XL 48/50"

***Buy 1 for £24 EACH or Buy 2 for £20 EACH!**

UP TO
2XL

FROM
£20*

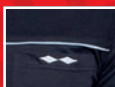
BUY **2** SAVE **£8**



LIGHT BLUE



MAGENTA



NAVY



PETROL



Mix & Match

2. Hamilton Polo Shirt - JB325

Make a bold statement with this eye-catching 3-tier design that sets you apart from the crowd. Style and comfort seamlessly, making it a must-have in your wardrobe. 80% Polyester | 20% Cotton. Colours: **Navy, Wine & Beige**
Size: M 42" L 44" XL 46/48" 2XL 50/52"

***Buy 1 for £24 EACH or Buy 2 for £20 EACH!**

UP TO
2XL

FROM
£20*

BUY **2** SAVE **£8**



NAVY



WINE



BEIGE

Call to order **0303 031 0310**

16

Online **www.jolliman.co.uk**

FROM **£20 EACH** WHEN YOU **BUY 2!**

Westminster Polo Shirt - JB185

Styled with a contrasting placket and shoulder seam, plus a chest pocket for those everyday essentials. This Polo shirt can be worn smart or casual. Poly/Cotton fabric.

Colours: **Grey, Blue, Charcoal & Wine**

Size: M 40" L 42/44" XL 46" 2XL 48/50"

***Buy 1 for £24 EACH or Buy 2 for £20 EACH!**

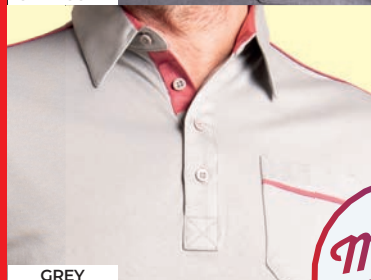
FROM
£20*

BUY
2

SAVE
£8



CHARCOAL



GREY



BLUE

Mix & Match



WINE

*Shirt Style
Collar*

**POLO
SIZES**

**UP TO
2XL**

Call to order **0303 031 0310**

17

Online **www.jolliman.co.uk**

ANY 2 POLOS FROM ONLY £16 EACH!

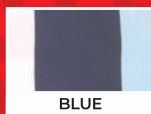
1. Striped Contrast 1/4 Zip Polo - JB287

Striped Contrast Polo shirt with stretch is another fine example of the Polo collection by Jolliman. The striking contrast of colours on the front will make you stand out from the crowd. 94% Cotton | 6% Elastane. Colours: **Blue, Grey & Green**
Size: M 38/40" L 42/44" XL 46/48" 2XL 48/50"
***Buy 1 for £19 EACH or Buy 2 for £16 EACH!**

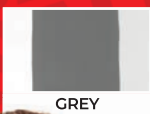
UP TO
2XL

FROM
£16*

BUY **2** SAVE **£6**



BLUE



GREY



GREEN

①

Zip Fastening

Mix & Match

②

Button Fastening

2. Austin Premium Short Sleeve Polo - JB285

Made from a luxury enriched soft material offering both comfort and sophisticated styling with contrasting colour in the button placket and neck. 100% Soft Polyester. Colours: **Navy, Mustard & Sand**
Size: M 40" L 42/44" XL 46" 2XL 48"
***Buy 1 for £19 EACH or Buy 2 for £16 EACH!**

UP TO
2XL

FROM
£16*

BUY **2** SAVE **£6**



NAVY



MUSTARD



SAND

Call to order **0303 031 0310**

18

Online **www.jolliman.co.uk**

1. Premium Chino Trouser With Belt - JA146

Comes complete with a belt and has attractive contrast piping. Flat front styling in a regular fit. 2 Side pockets and 2 back pockets. Look great styled smart or casual.

100% Premium Cotton.

Colours: **Blue & Stone**

Waist: 32", 34", 36", 38", 40", 42", 44", 46", 48"

Leg: Extra Short (27") Short (29") Regular (31")

ONLY
£30

BEST PRICE

COMES WITH A FREE BELT!

①

**WAIST
SIZE**

**UP TO
48"**



**100% PURE
COTTON**



BLUE



STONE

②

**WAIST
SIZE**

**UP TO
48"**



SKY



MULBERRY



NAVY



STONE



**EASY CARE
FABRIC**

Active Waist Cotton Chino - JA125

Now with our active stretch waist for all-day comfort. Featuring a zip fly, button fastening and belt loops. Two handy side pockets and two buttoned back pockets. 100% Cotton.

Colours: **Sky, Navy, Mulberry & Stone**

Waist: 32", 34", 36", 38", 40", 42", 44", 46", 48"

Leg: Extra Short (27")

Short (29") Regular (31")

**EXPANDING
WAIST**

For maximum comfort

WAS £40

NOW

£36

SAVE 10%

Call to order **0303 031 0310**

19

Online **www.jolliman.co.uk**

NEW & EXCLUSIVE TO JOLLIMAN!

Embroidered Sport Polo Shirts - JB333

Perfect for leisure sports enthusiasts, this contemporary fit shirt features an **embroidered sports logo** on the chest, contrast colour side panels on the front and undersleeve, a knitted collar and cuff with a contrast stripe, and internal back neck tape. It also includes twin needle stitching, a three-button placket in self-coloured buttons and reactive dyeing for long-lasting colour. 50% Polyester | 50% Cotton.

Design & Colour Options:

Bowls: Navy/Red & Black & Yellow

Darts: Navy/Red & Black & Yellow

Sizes Available:

M 40/42" L 42/44" XL 44/46"

2XL 46/48" 3XL 50/52"

Choose your Favourite Sport!

*Embroidered
Sports Logo*



DARTS
NAVY/RED

DARTS DESIGN



BLACK/YELLOW

BOWLS
BLACK/YELLOW

BOWLS DESIGN



NAVY/RED

ONLY £16 EACH

INTRODUCTORY *SPECIAL OFFER!*

Call to order **0303 031 0310**

20

Online www.jolliman.co.uk

ONLY
£28

**GREAT
VALUE**

EASY CARE FABRIC

Easy Pull On Jean Trousers - JA176

Made with a fully elasticated waist and internal drawstrings for all-day comfort, flat fly front and button fastening, 2 side pockets and one buttoned back pocket. Produced from easy care machine washable fabric. No wardrobe is complete without a pair of these comfortable jean-style trousers. Poly/Cotton Fabric.

Colour: **Denim**

Waist: 32" 34" 36" 38" 40" 42" 44" 46" 48"

50" 52" 54" 56" 58" 60"

Leg: Extra Short (27") Short (29") Regular (31")

**ELASTICATED
◀WAIST▶**

Pull-on and go!



Elasticated
Waist



2 Slanted
Side Pockets



Buttoned
Back Pocket

Full Features

- Fully elasticated waist
- Regular fitting
- Internal drawstring
- Flat front styling
- Zip and button fastening
- 2 hip pockets
- 1 back button pocket



**DRAWSTRING
WAIST**

**WAIST
SIZE**

**UP TO
60"**

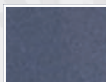


EASY PULL-ON COLLECTION

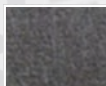
**ELASTICATED
◀WAIST▶**
Pull-on and go!



COMBAT
POCKETS



NAVY



GREY



BLACK



DRAWSTRING
WAIST

①



1. Easy Pull on Cargo Jogger - JA178

Our customer-favourite Leisure Joggers, equipped with combat pockets for your everyday essentials. Brushed interior for added comfort, an elasticated waist with drawstrings, and open hems.

Colours: **Black, Grey & Navy**

Waist: M 32/34" L 36/38" XL 40/42" 2XL 44/46"
3XL 48/50" 4XL 52/54" 5XL 56/58"

***Buy 1 for £23 EACH or Buy 2 for £20 EACH!**

FROM
£20*

BUY **2** SAVE **£6**

**ELASTICATED
◀WAIST▶**
Pull-on and go!



RECYCLED
FABRIC



7 ASSORTED
POCKETS

②



NAVY



BLACK



DRAWSTRING
WAIST



SUSTAINABLE RECYCLED FABRIC

2. Multi Pocket Full Elasticated Waist Trousers - JA182

Sustainable recycled 100% polyester herringbone effect fabric. 2 side, 2 back and 2 knee cargo pockets secured with Velcro for added convenience. We've also added a zipped side security pocket.

Colours: **Navy & Black**

Waist: 34" 36" 38" 40" 42" 44" 46" 48"

Leg: Extra Short (27") Short (29") Regular (31")

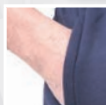
***Buy 1 for £23 EACH or Buy 2 for £20 EACH!**

FROM
£20*

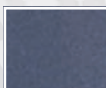
BUY **2** SAVE **£6**

BUY 2 PAIRS FROM ONLY £20 EACH!

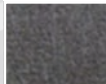
**ELASTICATED
◀WAIST▶**
Pull-on and go!



ZIP SIDE
POCKETS



NAVY



GREY



BLACK



DRAWSTRING
WAIST

①

1. Easy Pull on Leisure Jogger - JA113

Men's casual style joggers. Brushed on the inside for extra warmth and comfort. Featuring open hems and an elasticated waistband with drawstrings.

60% Cotton | 40% Polyester.

Colours: **Black, Grey & Navy**

Waist: M 32/34" L 36/38" XL 40/42" 2XL 44/46"
3XL 48/50" 4XL 52/54" 5XL 56/58"

***Buy 1 for £23 EACH or Buy 2 for £20 EACH!**

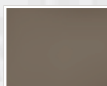
FROM
£20*

BUY **2** SAVE **£6**

**ELASTICATED
◀WAIST▶**
Pull-on and go!



②



KHAKI



SKY



STONE



NAVY



DRAWSTRING
WAIST

2. Easy Pull On Chino Trousers - JA19

RELAXED FIT elasticated waist with internal drawstring. Flat fly-front with button fastening. Two side pockets. One buttoned back pocket. Belt loops for belts 1.5" wide.
65% Polyester | 35% Cotton.

Colours: **Stone, Sky, Khaki & Navy**

Waist 34" 36" 38" 40" 42" 44" 46" 48" 50" 52" 54" 56" 58" 60"
Leg: Extra Short (27") Short (29") Regular (31")

***Buy 1 for £23 EACH or Buy 2 for £20 EACH!**

FROM
£20*

BUY **2** SAVE **£6**

ANY 2 FOR ONLY £10 EACH - SAVE 16%

1. Contrast Polo Shirt - JB216

These stunning shirts have a contrasting trim on the collar, placket and arm and sure to make you stand out from the crowd. 100% Ring Spun Combed Cotton.

Colours: **Red, White & Navy**
Size: S 38" M 40" L 42/44"
XL 46" 2XL 48" 3XL 50/52"

***Buy 1 for £12 EACH
or Buy 2 for £10 EACH!**

UP TO
3XL

FROM
£10*

BUY 2 SAVE £4



RED



WHITE



NAVY

Contrast Trim & Collar

①

Mix & Match



Chest Pocket

②

2. Soft Touch Polycotton Stretch T-Shirt - JB324

Designed for supreme comfort with a hint of stretch. Complete with a convenient single breast pocket, it's the perfect blend of style and functionality for your everyday wardrobe.

60% Polyester | 40% Cotton.
Colours: **Stone, Petrol, Rust, Black & Denim**

Size: M 40" L 42/44" XL 46" 2XL 48"

***Buy 1 for £12 EACH
or Buy 2 for £10 EACH!**

UP TO
2XL

FROM
£10*

BUY 2 SAVE £4



STONE



PETROL



RUST



BLACK



DENIM



100% PURE COTTON

Call to order **0303 031 0310**

24

Online www.jolliman.co.uk

ONLY
£36

**BEST
PRICE**

**WAIST
SIZE**

**UP TO
46"**



**EXPANDING
WAIST**
For maximum comfort

Premium Travel Chino Shorts - JA137

These active waist chino shorts feature flat front styling and an active stretch waist for comfort. They come equipped with two side pockets and two back pockets, a zip and button fastening, and belt loops. Made from 100% cotton fabric, they provide both durability and style.

100% Cotton.

Colours: **Navy, Sky, Sand & Mulberry**

Waist: 32", 34", 36", 38", 40", 42", 44", 46", 48"



**2 Slanted
Side Pockets**



**2 Buttoned
Back Pockets**



**100% PURE
COTTON**



NAVY



SKY



SAND



MULBERRY

Call to order **0303 031 0310**

25

Online **www.jolliman.co.uk**

1. Sutton Small Gingham Check Shirt - JB322

A classic wardrobe must-have featuring short sleeves and a delightful small check design and a single chest pocket. Provides durability and comfort ideal for daily wear.

80% Polyester | 20% Cotton.

Colours: **Navy, Blue, Green & Red**
M 38/40" L 42/44" XL 46/48"
2XL 50/52"



RED



NAVY



GREEN



BLUE



Chest Pocket

UP TO
2XL

WAS **£23**

NOW

£21

• **SAVE 8%**



V-style
detailing



②

2. Soft Peach Finish Crew Neck Jumper - JF214

A perfect wardrobe essential with ribbed crew neck with v-detailing, long sleeves and soft peach finish. Ideal for casual yet refined outfits.

100% Acrylic.

Colours: **Hazelnut, Midnight & Shortbread**

Size: M 38/40" L 42/44"
XL 46/48" 2XL 50/52"



HAZELNUT



MIDNIGHT



SHORTBREAD

UP TO
2XL

WAS **£25**

NOW

£21

• **SAVE 16%**

Call to order **0303 031 0310**

26

Online **www.jolliman.co.uk**

FROM
£22*

BUY
2

SAVE
£6

**EXPANDING
WAIST**
For maximum comfort

Easy Care Travel Trousers - JA69

Offering the perfect combination of style and practicality. Featuring an ingenious and discreet side self-adjusting 4" waistband that ensures they stay in place throughout the day. Lightweight, easy care fabric, 2 side pockets, 2 rear buttoned pockets and coin pocket. French bearer, button fastening and belt loops. 100% Polyester.

Colours: **Beige, Grey & Sky**

Waist: 34", 36", 38", 40", 42", 44", 46",

48", 50", 52", 54", 56", 58", 60"

Leg: Extra Short (27") Short (29") Regular (31")

***Buy 1 for £25 EACH or Buy 2 for £22 EACH!**

**WAIST
SIZE**

**UP TO
60"**

**SUPERIOR
CREASE**

**extra £7
per trouser**



**2 Slanted
Side Pockets**



**2 Buttoned
Back Pockets**



GREY



BEIGE



SKY

Call to order **0303 031 0310**

27

Online **www.jolliman.co.uk**

SAVE UP TO A MASSIVE 26%

Linen-Look Short Sleeve Shirt - JB328

Timeless sophistication with this Linen Blend Shirt, boasting a classic striped design crafted from a luxurious blend of linen and cotton. Experience unparalleled comfort and breathability, perfect for any occasion. Pair with tailored trousers for a polished look or jeans for a relaxed vibe. Elevate your style effortlessly with this versatile wardrobe essential. 100% Cotton.

Colours: **Navy, Beige & Grey**

Size: M 42" L 44" XL 46/48"
2XL 50/52"

GREY

Big Summer SALE

WAS £24

NOW

£21

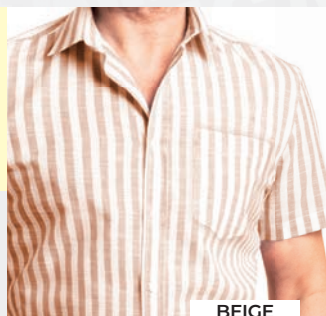
• SAVE 12%

Chest
Pocket



SHIRT
SIZES

UP TO
2XL



Call to order **0303 031 0310**

28

Online www.jolliman.co.uk

ON OUR LINEN COLLECTION!

1. Linen Blend Trousers - JA84

Discreet self-adjusting waistband that adjusts up to 2" ensuring maximum comfort. Zip fly and belt loops for belts up to 1 ½" wide. Two side slant pockets and two buttoned back pockets. 55% Cotton | 45% Linen.

Colours: **Blue & Beige**

Waist: 32" 34" 36" 38" 40" 42" 44" 46" 48" 50" 52" 54" 56" 58" 60"

Leg: Extra Short (27") Short (29") Regular (31")

***Buy 1 for £30 EACH
or Buy 2 for £22 EACH!**

FROM
£22*

**BUY 2
SAVE
£16**

**EXPANDING
WAIST**
For maximum comfort



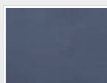
①

**WAIST
SIZE**

**UP TO
60"**

**SUPERIOR
CREASE**

**extra £7
per trouser**



BLUE



BEIGE



BLUE



BEIGE

②

**WAIST
SIZE**

**UP TO
48"**

2. Linen Blend Shorts - JA110

Featuring a self-adjusting waist with flat front, zip and button fastening, belt loops, 2 side pockets, and 2 buttoned back pockets. For a perfect match, pair these shorts with our fabulous linen shirts.

55% Linen | 45% Cotton.

Colours: **Blue & Beige**

Waist: 32", 34", 36", 38", 40", 42", 44", 46", 48"

***Buy 1 for £30 EACH
or Buy 2 for £22 EACH!**

FROM

£22*

**BUY 2
SAVE
£16**

**EXPANDING
WAIST**
For maximum comfort

ANY 2 TROUSERS FROM ONLY £22 EACH!

**EXPANDING
WAIST**
For maximum comfort

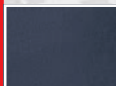
①

**WAIST
SIZE**

**UP TO
60"**

**SUPERIOR
CREASE**

**extra £7
per trouser**



NAVY



GREY



BLACK

1. Wonder Waist Trousers - JA26

Discreet Active stretch waist. Single pleat front French bearer and button fastening with zip fly. 2 slanted side pockets and buttoned back pocket. Machine washable. 65% Polyester | 35% Viscose.

Colours: **Navy, Grey & Black**

Waist: 32", 34", 36", 40", 42", 44", 46", 48", 50", 52", 54", 56", 58", 60"

Leg: Extra Short (27") Short (29") Regular (31")

***Buy 1 for £30 EACH or Buy 2 for £22 EACH!**

FROM

£22*

**BUY
2**

**SAVE
£16**

②

Mix & Match

**SUPERIOR
CREASE**

**extra £7
per trouser**



NAVY



GREY



BLACK

**LEG
SIZE**

**UP TO
33"**

2. Active Stretch Waist Trouser - JA115

Teflon-treated fabric for stain resistance, 4" self-adjusting waist, single pleat front, 2 side pockets, 1 buttoned back pocket, belt loops for belts up to 1 1/2". Zip fly and button fastening.

Colours: **Black, Grey & Navy**

Waist: 32", 34", 36", 38", 40", 42", 44", 46", 48", 50", 52", 54", 56", 58", 60"

Leg: Extra short (27") Short (29") Regular (31") Long (33")

***Buy 1 for £30 EACH or Buy 2 for £22 EACH!**

FROM

£22*

**BUY
2**

**SAVE
£16**

Call to order **0303 031 0310**

30

Online **www.jolliman.co.uk**

MIX & MATCH - WONDER-WAIST TROUSERS

①



EXPANDING WAIST
For maximum comfort

Mix & Match

WAIST SIZE
UP TO **60"**

SUPERIOR CREASE
extra **£7** per trouser

**CHARCOAL**

**BLACK**

**BROWN**



EXPANDING WAIST
For maximum comfort

Mix & Match

WAIST SIZE
UP TO **48"**

SUPERIOR CREASE
extra **£7** per trouser

**BURNT ORANGE**

**BISCUIT**

**WALNUT**

**SOFT PEACH FINISH**

WAIST SIZE
UP TO **48"**

1. Jolliman Classic Trousers - JA65

Single pleat with 4" self adjusting waist. Button fastening and zip fly. 2 slanted side and 2 button back pockets. Soft touch fabric. Belt loops for belts up to 1¼". 100% Polyester.

Colours: **Brown, Black & Charcoal**

Waist: 32", 34", 36", 38", 40", 42", 44", 46", 48", 50", 52", 54", 56", 58", 60"

Leg: Extra short (27") Short (29") Regular (31")

***Buy 1 for £30 EACH or Buy 2 for £22 EACH!**

FROM
£22*

BUY **2** SAVE **£16**

2. Premium Expanding Waist Travel Trouser - JA180

Equipped with an expanding waist that adapts to your body. Shirt-gripping waistband keeps your shirt neatly tucked in. Soft poly/viscose fabric with a peach finish and 4% stretch for a flattering fit.

Colours: **Burnt Orange, Biscuit & Walnut**

Waist: 34", 36", 38", 40", 42", 44", 46", 48"

Leg: Extra Short (27") Short (29") Regular (31")

***Buy 1 for £30 EACH or Buy 2 for £22 EACH!**

FROM
£22*

BUY **2** SAVE **£16**

Call to order **0303 031 0310**

31

Online **www.jolliman.co.uk**

The intricate Argyle design adds elegance, perfect for those who value style and practicality, whether at a meeting or on the golf course.

Colours: **Beige & Blue**
Size: M 38/40" L 42/44" XL
46/48" 2XL 50/52"

**SAVE
15%**

FROM

£17*

BUY
2

**SAVE
£6**



BLUE



BEIGE



Mix & Match



Suitable for both smart and casual wear. The timeless argyle pattern and high-quality materials ensure that this piece will remain a staple in your collection for years to come.

Colours: **Beige & Blue**
Size: M 38/40" L 42/44" XL
46/48" 2XL 50/52"

**SAVE
15%**

FROM

£17*

BUY
2

**SAVE
£6**



BLUE



BEIGE

WAS £28
NOW ONLY
£17.50
EACH

SAVE
37%

EXPANDING
WAIST
For maximum comfort

WAIST
SIZE
UP TO
60"

While stocks last!

Comfort Waist Trousers - JA64

Featuring an ingenious 2" self-adjusting system. The concealed panels expand and contract to fit you perfectly all day, every day. Flat fronted. Button and clip fastening. Zip fly, Slanted side pockets and a button back pocket. Belt loops for belts up to 1½" wide. 100% Polyester.

Colours: **Beige, Brown & Grey**

Waist: 34", 36", 38", 40", 42", 44", 46", 48", 50", 52", 54", 56", 58", 60"

Leg: Extra Short (27") Short (29") Regular (31")

LEG
SIZE

UP TO
31"



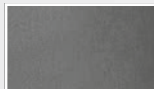
**2 Slanted
Side Pockets**



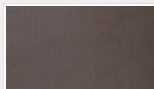
**Buttoned
Back Pocket**

**SUPERIOR
CREASE**

**extra £7
per trouser**



GREY



BROWN



BEIGE

Call to order **0303 031 0310**

33

Online **www.jolliman.co.uk**

1. Full Zip Basic Cardigan - JF205

Soft fabric and full-zip closure, it offers comfort and style for any occasion. Crafted with care for durability and easy maintenance, it's a wardrobe staple you'll cherish for years.

100% Acrylic.

Colours: **Grey, Plum & Navy**

Size: M 38/40" L 42/44"

XL 44/46" 2XL 46/48"

SIZES

UP TO
2XL

ONLY
£30

BEST PRICE



GREY



PLUM



NAVY



Made in the UK!

①



2 FRONT
POCKETS



Made in the UK!

②



2. Marl-knit Zip Front Cardigan - JF132

This jacquard cardigan is versatile for smart or casual wear. It features a mandarin-style collar, full zip fastening, 2 front patch pockets, and rib cuffs and hem. 100% Acrylic.

Colours: **Blue, Grey, Wine & Beige**

Size: M 38/40" L 42/44"

XL 46/48" 2XL 50/52"

3XL 54/56" 4XL 58/60"

***Buy 1 for £30 EACH
or Buy 2 for £27 EACH!**

UP TO
4XL

FROM
£27*

BUY
2

SAVE
£6



BLUE



GREY



WINE



BEIGE

Call to order **0303 031 0310**

34

Online www.jolliman.co.uk

1. Classic Design Zip Cardigan - JF166

This jacquard design cardigan comes with a concealed zip a half moon collar, 2 front pockets, ribbed cuffs and hem. Looks great with a plain shirt or just layer up when required.

100% Soft Acrylic.

Colours: **Grey, Black, Blue, Wine, Beige & Navy**

Size: M 38/40" L 42/44" XL 46/48" 2XL 50/52" 3XL 54/56"

***Buy 1 for £26 EACH or Buy 2 for £24 EACH!**



Made in the UK!



FROM
£24*

BUY 2 SAVE £4

Zip Fastening

②



2. Premium Marl Effect Zip Jumper - JF173

Full zip high funnel neck provides extra warmth and protection, while the two side pockets offer ample space to keep your hands warm or store your essentials. 50% Cotton | 50% Polyester.

Colours: **Beige, Grey & Navy**

Size: M 38/40" L 42/44" XL 44/46" 2XL 46/48"

***Buy 1 for £28 EACH or Buy 2 for £26 EACH!**

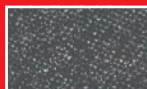
UP TO
2XL

FROM
£26*

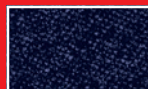
BUY 2 SAVE £4



BEIGE



GREY



NAVY

Call to order **0303 031 0310**

35

Online **www.jolliman.co.uk**

1. Classic Long Sleeve Pilot Shirt - JB81

Made from a cotton/polyester blend which is more durable than typical pure cotton shirts and is more breathable. Features two handy chest pockets that are ideal for carrying pocket-sized items. 65% Polyester | 35% Cotton.

Colours: **White & Blue**

Size: M 15½" L16" XL 17"
2XL 18" 3XL 19"

***Buy 1 for £24 EACH
or Buy 2 for £20 EACH!**

UP TO
3XL

FROM
£20*

BUY
2 SAVE
£8

SHOULDER
EPAULETTES

WHITE

BLUE

SHOULDER
EPAULETTES

Mix & Match

①

②

2. Classic Short Sleeve Pilot Shirt - JB155

Made from a cotton/polyester blend which is more durable than pure cotton shirts and is more breathable. Two handy chest pockets that are ideal for carrying pocket-sized items. 65% Polyester | 35% Cotton.

Colours: **White & Blue**

Size: M 15½" L16" XL 17"
2XL 18" 3XL 19"

***Buy 1 for £23 EACH
or Buy 2 for £20 EACH!**

UP TO
3XL

FROM
£20*

BUY
2 SAVE
£6

WHITE

BLUE

Call to order **0303 031 0310**

36

Online **www.jolliman.co.uk**

1. Farnham Multi Pocket Bodywarmer - JE54

Lightweight and comfortable with a water resistant finish. The full zip and stud fastening will keep the chill out and comes with multiple pockets to carry those everyday essential items.

85% Polyester | 15% Nylon.

Colours: **Navy, Taupe & Stone**

Size: S 38"/40" M 42"/44"

L 44"/46" XL 48"/50"

2XL 50"/52" 3XL 54"/56"

UP TO
3XL

ONLY
£35

BEST PRICE



Multi-Use Pockets



NAVY



TAUPE



STONE

①



9

MULTI-USE POCKETS

WAIST SIZE

UP TO
52"



NAVY



STONE



BLACK



2. Multi Pocket Action Trousers - JA172

Part elasticated waistband for added comfort. Water repellent finish. Designed and cut with activity and movement in mind. 6 zip & 3 open pockets.

65% Polyester | 35% Cotton.

Colours: **Navy, Black & Stone**

Waist: 32", 34", 36", 38", 40",

42", 44", 46", 48", 50", 52"

Leg: Extra Short (27")

Short (29") Regular (31")

EXPANDING WAIST
For maximum comfort

ONLY
£40

GREAT VALUE

Call to order **0303 031 0310**

37

Online **www.jolliman.co.uk**

1. Prince of Wales Check Jacket - JC200

Prince of Wales fabric jacket with high neck flap and two-button fastening. Features two side pockets with button and flap closures, one inner pocket, and contrasting ribbed cuffs and hem.

50% Polyester | 50% Cotton.

Colours: **Black & Grey**

Size: S 38" M 40"

L 42/44" XL 46"

2XL 48" 3XL 50/52"

SIZES

UP TO

3XL

ONLY

£35

GREAT DEAL



BLACK



GREY



*Made in
the UK!*

①



FLAP
POCKETS

*Zip To Neck
Fastening*

②



2. Classic Birkdale Jacket - JC67

Water repellent finish. Styled with a regular fit, full zip fastening and adjustable cuffs. 2 side entry pockets and 2 inside pockets for those essential items. 100% Polyester Microfibre.

Colours: **Navy & Stone**

Size: M 42/44" L 44/45"

XL 46/48" 2XL 50/52"

3XL 54/56"

Champion.

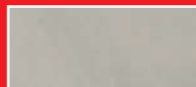
ONLY

£30

BEST PRICE



NAVY



STONE

Call to order **0303 031 0310**

38

Online **www.jolliman.co.uk**



SINGLE INSIDE POCKET

RED

Big Summer SALE

Check Lining

GREEN

BLACK

NAVY

WINE

GREEN

STONE

FROM
£30*

BUY
2
SAVE
£6

Harrington Jacket - JC121

The timeless Harrington Jacket, a classic favourite for decades, remains a popular choice today due to its versatility. Crafted from soft, easy-care fabric and featuring practical details like slanted pockets and ribbed cuffs and hem, it continues to charm across generations. 100% Peach Finish Polyester.

Colours: **Black, Navy, Wine, Green & Stone**
Chest Size: S 40" M 42" L 44" XL 46/48"
2XL 50/52" 3XL 54" 4XL 56" 5XL 58"

***Buy 1 for £33 EACH or Buy 2 for £30 EACH!**

Amazing Value!

①

**EXPANDING
WAIST**
For maximum comfort

**SUPERIOR
CREASE**

extra £7
per trouser

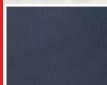


**EASY CARE
FABRIC**

②



**4 WAY ACTIVE
STRETCH**



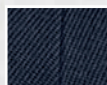
NAVY



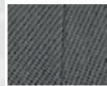
GREY



BLACK



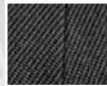
NAVY



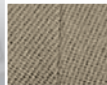
GREY



BLACK



CHARCOAL



TAUPE

1. FARAH 4 Way Active Stretch Trouser - JA130

4 way active stretch waist
easy care fabric, 2 back
pockets with buttons and 2
side pockets. Flat front with
French bearer and zip fly.

73% Polyester 21% Viscose
6% Elastane.

Colours: **Navy, Grey & Black**

Waist: 32" 34" 36" 38" 40" 42" 44" 46"

Leg: Extra Short (27")

Short (29") Regular (31")

ONLY
£45

BEST PRICE

**WAIST
SIZE**

UP TO
46"

2. FARAH Easy Care Trouser - JA131

With a stretch waistband
they not only offer style but
all-day comfort. Featuring
a French bearer, 2 side
pockets, zip fly and single
back pocket.
100% Polyester.

Colours: **Navy, Charcoal, Grey,
Black & Taupe**

Waist: 32" 34" 36" 38" 40" 42" 44" 46"

Leg: Extra Short (27") Short (29")

Regular (31")

ONLY
£45

BEST PRICE

**WAIST
SIZE**

UP TO
46"

100% Cotton Tattersall Long Sleeve Shirt - JB18

Our classic Tattersalls have made a bit of a name for themselves. Loved for their timeless British styling, generous cut and unrivalled tailoring, they look (and feel) great worn casually or with a tie. Brushed on the inside for extra comfort. Chest pocket and mock horn buttons. 2 button cuffs. Straight hem. 100% Pure Cotton.

Colours: **Blue, Red & Green**

Size: M 40" L 42" XL 44"

2XL 46/48" 3XL 50/52"

***Buy 1 for £22 EACH or Buy 2 for £20 EACH!**

FROM
£20*

BUY
2

SAVE
£4

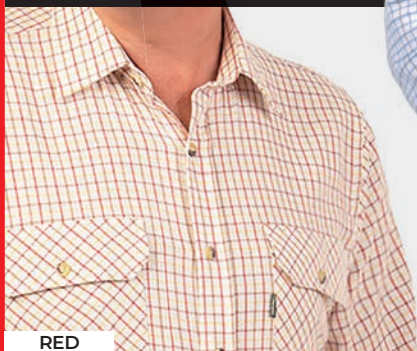
Champion.



100% PURE
COTTON

BLUE

*Flapped
Pockets*



RED



GREEN

*Best
Seller*



Call to order **0303 031 0310**

Online **www.jolliman.co.uk**

WAS £30
NOW
£25

SAVE
16%

WAIST
SIZE
UP TO
60"

SUSTAINABLE RECYCLED FABRIC

ELASTICATED
◀WAIST▶

Pull-on and go!

Easy Pull On Quality Plus Trousers - JA185

This 2-pack of trousers includes a pair in navy and a pair in grey. They feature an Elasticated waist and discreet internal drawstring. Flat fly-front with button fastening, two side pockets, and one buttoned back pocket. The belt loops for belts up to 1.5" wide. Made from sustainable recycled materials.

2 Pack Colours: **1 x Grey - 1 x Navy**

Waist: 34", 36", 38", 40", 42", 44", 46", 48", 50", 52", 54", 56", 58", 60"

Leg: Extra Short (27") Short (29") Regular (31")



RECYCLED
FABRIC



2 Slanted
Side Pockets



Buttoned
Back Pocket

Call to order 0303 031 0310

42

Online www.jolliman.co.uk

1. Bedford Cord Trousers - JA174

This five pocket trouser is made in a light traditional Bedford cord weave with a soft brush feel. Regular fit with 2 front, 2 back pockets and large coin pocket. 71% Cotton | 29% Polyester.

***Buy 1 for £35 EACH or Buy 2 for £32 EACH!**

Colours: **Black, Brown, Grey, Navy & Taupe**
Waist: 34", 36", 38", 40", 42", 44", 46", 48", 50"
Leg: Extra Short (27") Short (29") Regular (31")

FROM
£32*

BUY 2 SAVE £6

**WAIST
SIZE**

**UP TO
50"**



BLACK



BROWN



GREY



NAVY



TAUPE



①



*Pattern
Detail*

②

2. Knitted Zip Neck Polo - JB327

The perfect fusion of style and comfort that's bound to become a staple in your wardrobe. Stylish zip collar and knitted finish offers a sleek appearance and also unparalleled durability and ease of care. 100% Polyester.

Colours: **Sand & Navy**
M 38/40" L 42/44" XL 46/48"
2XL 50/52"

**UP TO
2XL**

WAS £22

NOW

£21

SAVE 4%



SAND



NAVY

Call to order **0303 031 0310**

43

Online **www.jolliman.co.uk**

1. Cavalry Twill Expanding Waist Trouser - JA02

Cavalry Twill is quality tailoring with a classic style. 2 side pockets and a single buttoned back pocket. Belt loops for belts up to 1½" wide. Machine washable. 100% Polyester.

Colours: **Navy, Grey & Camel**
Waist: 32" 34" 36" 38" 40" 42" 44" 46" 48" 50" 52" 54" 56" 58" 60"

Leg: Extra Short (27")
Short (29") Regular (31")

***Buy 1 for £30 EACH
or Buy 2 for £25 EACH!**

**EXPANDING
WAIST**
For maximum comfort

FROM
£25*

**BUY 2
SAVE
£10**

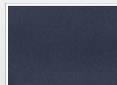
**WAIST
SIZE**

**UP TO
60"**

①

**SUPERIOR
CREASE**

**extra £7
per trouser**



NAVY



GREY



CAMEL



*Zip Neck
Fastening*

②



2. 1/4 Zip Long Sleeve Top - JB304

Crafted from premium cotton pique with vertical stripes for modern elegance. The quarter zip offers versatility and adjustability. Timeless style for any occasion. 100% Premium Cotton Pique.

Colours: **Navy & Grey**
Size: M 38/40" L 42/44"
XL 44/46" 2XL 46/48"

**UP TO
2XL**

WAS £30

NOW

£28

SAVE 6%



NAVY



GREY

Call to order **0303 031 0310**

44

Online **www.jolliman.co.uk**

1. Double Two Short Sleeve Shirt - JB289

Since 1940, Double Two is known for quality and classic fit. These shirts are versatile for both formal and casual wear, featuring a single breast pocket.

55% Cotton | 45% Recycled Polyester.

Colours: **White, Pink, Yellow & Blue**

Size (Collar): 15", 16", 17", 18", 19", 20", 21"

DOUBLETWO
— Since 1940 —

ONLY
£42

BEST PRICE



WHITE



PINK



YELLOW



BLUE



①

Chest Pocket



②



2. Peter England Warm Handle Casual Long Sleeve Shirts - JB320

Offering a cosy feel with easy-care properties. Featuring a classic collar, functional breast pocket, and adjustable cuffs. 60% Cotton | 40% Polyester.

Colours: **Red/Navy, Green Check & Brown Check**
Size: M 15"/15.5" L 16"/16.5"
XL 17"/17.5" 2XL 18"/18.5"

*Buy 1 for **£35 EACH** or
Buy 2 for **£32 EACH!**

Peter England

FROM
£32*

**BUY
2**

**SAVE
£6**



RED/NAVY



BROWN



GREEN

Call to order **0303 031 0310**

45

Online **www.jolliman.co.uk**

1. REGATTA Action Trousers - JA67

Durable & water repellent,
ideal for walking,
gardening, or work-wear.
Part elasticated waist, open
and zipped pockets.
65% Polyester | 35% Cotton.

Colours: **Black, Navy,
Grey & Beige**

Waist: 32" 34" 36" 38"
40" 42" 44" 46"

Leg: Extra Short (27")
Short (29") Regular (31")
Long (33")

REGATTA
GREAT OUTDOORS

ONLY
£30

BEST PRICE

ECO
Fabric

WATER/STAIN RESISTANT

**WAIST
SIZE**

**UP TO
46"**



**MULTI
POCKET**



BEIGE



NAVY



GREY



BLACK

**LEG
SIZE**

**UP TO
33"**

①

②

2. Eco Crew Neck Jumper - JF215

Eco-friendly jumper with rich,
lasting colour from reactive dye,
durable twin needle stitching.

Tailored set-in sleeves, offers
both style and comfort. Lycra
ribbed cuffs and neck.

**50% Recycled Polyester
30% Recycled Cotton
20% Organic Cotton**

FROM

£16*

**BUY
2**

**SAVE
£4**

Colours: **Grey, Navy, Royal, Burgundy & Black**

Size: S 38/40" M 40/42" L 42/44" XL 44/46"

2XL 46/48" 3XL 50/52"

***Buy 1 for £18 EACH or Buy 2 for £16 EACH!**



BURGUNDY



ROYAL



BLACK



CHARCOAL



NAVY

Call to order **0303 031 0310**

46

Online **www.jolliman.co.uk**

1. Classic Denim Jeans - JA86

Regular fit straight leg jeans. Classic double stitching, button waist fastening/zip fly, 5 pocket western styling & belt loops up to 1½" wide. 100% Cotton.

Colours: **Black & Stonewash**

Waist: 32" 34" 36" 38" 40"

42" 44" 46" 48" 50" 52"

54" 56" 58" 60"

Leg: Extra Short (27")

Short (29") Regular (31")

***Buy 1 for £26 EACH or**

Buy 2 for £24 EACH!

**EXPANDING
WAIST**
For maximum comfort

FROM
£24*

**BUY 2 SAVE
£4**

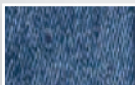
**WAIST
SIZE**

**UP TO
60"**

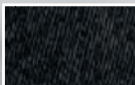
①



100% PURE
COTTON



STONEWASH



BLACK



POLY/COTTON
FABRIC



②

2. Long Sleeve Polo Shirt - JB251

This versatile polo shirt is the perfect layer for smart-casual days. Long-sleeved style 3 button placket collar, side vents and extended back with a luxurious, textured feel. 65% Polyester | 35% Cotton.

Colours: **Charcoal,**

Burgundy & Navy

Size: M 40" L 42" XL 44" 2XL

46/48" 3XL 50/52" 4XL 54/56"

***Buy 1 for £20 EACH or**

Buy 2 for £17 EACH!

UP TO
4XL

FROM
£17*

**BUY 2 SAVE
£6**



GREY



BURGUNDY



NAVY

Call to order **0303 031 0310**

47

Online **www.jolliman.co.uk**

HUGE REDUCTIONS ON MENSWEAR

WAS £18

£13

• SAVE 27%

Comfort Stretch Contrast Polo - JB296

Classic Pique knitted structure, contrasting collar and upper body, button fastening. 96% Cotton | 4% Elastane.

Colours: **Turquoise, Mint, Pink & Orange**

Size: M 38/40" L 42/44" XL 46/48" 2XL 48/50"

WAS £70

£30

• SAVE 57%

Prestbury All Weather Jacket - JC191

Waterproof, comfortable and warm. With a detachable hood, 3 front zip pockets, inside pocket, quilted lining and Velcro fastening cuffs. 100% Polyester inner and outer.

Colour: **Grey** Size: M 40" L 42" XL 44"

WAS £29

£20

• SAVE 31%

Ribbed Crewneck Patterned Jumper - JF203

The Ribbed Crew Neck Jumper is a comfortable, low maintenance and design-forward choice for any occasion.

Colours: **Claret, Taupe, Navy & Grey**

Size: M 38/40" L 42/44" XL 44/46" 2XL 46/48"

WAS £21

£14

• SAVE 33%

Patterned Short Sleeve Shirt - JB302

Regular fitting. Features a generously rounded hem, full button fastening and a breast pocket. 100% Cotton.

Colours may vary.

M 40" L 42/44" XL 46" 2XL 48" 3XL 50/52" 4XL 54"

Call to order **0303 031 0310**

48

Online **www.jolliman.co.uk**

£14

• BEST PRICE



Casual Shirt With Deer Logo - JB294

These 100% cotton twill shirts. Regular fit, with a neat button-down collar and features a subtle stag motif on the chest. Colours: **White & Pink**

Size: M 40" L 42" XL 44" 2XL 46"

WAS £25

£15

• SAVE 40%



Classic Rugby Shirt - JB225

Rugby shirt made from 100% Pre-shrunk combed cotton with a white woven collar and placket trim.

Colours: **Navy, Red, Black & Royal**

Size: S 38/40" M 40/42" L 42/44" XL 44/46" 2XL 46/48" 3XL 50/52"

WAS £20

£12

• SAVE 40%



Cashmilon V Neck Sweater - JF191

Cashmilon is super soft to the touch and perfect when creating a smarter look or simply wear casual.

Colours: **Black, Navy, Grey, Beige & Mustard**

Size: S 38" M 40" L 42/44" XL 44/46" 2XL 46/48"

WAS £36

£24

• SAVE 33%



Chenille Full Zip Lined Cardigan - JF176

Striking vertical design Cardigan, soft faux fur lining, full zip fastening and lined pockets. 100% Polyester.

Colour: **Grey**

Size: M 38/40" L 42/44" XL 44/46" 2XL 46/48"

WAS £29

£13

•SAVE 55%



1/4 Zip Cashmilon Jumper - JF212

This sweater is a versatile addition to any wardrobe. 100% Acrylic premium fabric with easy-care properties.

Colours: **Navy, Grey, Green, Black, Taupe & Maroon**

Size: S 38 M 40" L 42/44" XL 44/46" 2XL 46/48"

WAS £21

£14

•SAVE 33%



Velour Lined Check Overshirt - JB254

Check design with contrast velour lining. 2 button cuffs and single button breast pockets to carry those essential items. 100% Polyester. Colours: **Red, Blue & Green**

M 40/42" L 42/44" XL 44/46" 2XL 46/48" 3XL 50/52" 4XL 52/54" 5XL 54/56"

EXPANDING WAIST

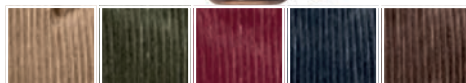
For maximum comfort



WAS £35

£25

•SAVE 28%



FAWN

OLIVE

WINE

NAVY

BROWN

Classic Expanding Waist Lincoln Cords - JA71

Expanding waist, eight wale cord, button & bar fastening, high waist, flat front, jetted pockets, soft touch cotton.

Colours: **Fawn, Olive, Wine, Navy & Brown**

Waist: 32" 34" 36" 38" 40" 42" 44" 46" 48" 50" 52" 54" 56" 58" 60"

Leg: Extra Short (27") Short (29") Regular (31")

UNBEATABLE MULTI-BUY OFFERS!

1. Harrow Nightshirt - JG33

Stylish stripes and a soft finish, this Harrow nightshirt will ensure you have a comfortable sleep. Long sleeves and chest pocket.

100% Brushed Cotton. Colours: **Navy & Blue**
M 38/40" L 42/44" XL 46" 2XL 48" 3XL 50/52"

***Buy 1 for £26 EACH or Buy 2 for £24 EACH!**



FROM
£24*

BUY
2

SAVE
£4



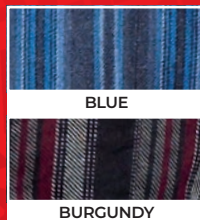
2. Kingston Pyjamas - JG50

Classically designed pyjama set designed for warmth and comfort. Single chest pocket, and trousers with an elasticated waist and button fly. Tailored with stylish piping details. 100% Brushed Cotton.

Colours: **Burgundy & Blue**

S 36/38" M 38/40" L 42/44" XL 44/46" 2XL 48/50" 3XL 52/54"

***Buy 1 for £30 EACH or
Buy 2 for £28 EACH!**



FROM
£28*

BUY
2

SAVE
£4

Call to order **0303 031 0310**

51

Online **www.jolliman.co.uk**

ANY 2 PYJAMA SETS FROM £24 EACH!

Richmond Pyjama Short Set - JG02

Experience timeless comfort in our shirt and shorts pyjama set is perfect for year-round wear. The shirt showcases a turned-down collar, chest pocket and effortlessly undo-able buttons, while the shorts offer an elasticated waist and convenient button fly for added ease. With stylish piping detail throughout. Machine washable. 65% Polyester | 35% Cotton.

Colours: **Navy & Blue**

M 38/40" L 42/44" XL 44/46" 2XL 48/50" 3XL 52/54"

***Buy 1 for £26 EACH or Buy 2 for £24 EACH!**

FROM

£24*

BUY
2

SAVE
£4

*Mix &
Match*



AVAILABLE IN
NAVY OR BLUE

Big Summer SALE

*Cool &
Lightweight*



**PYJAMA
SIZES**
UP TO
3XL

Call to order **0303 031 0310**

52

Online www.jolliman.co.uk

MIX & MATCH ON LIGHTWEIGHT PYJAMAS

Thames Pyjamas - JG11

Wrap yourself in timeless comfort and style with our versatile sleepwear set, designed to cater to your every need. Enjoy the subtle elegance of the button-down shirt with its sophisticated piping detail, perfectly paired with elasticated waist trousers that prioritise your comfort above all else. 65% Polyester | 35% Cotton.

Colours: **Navy & Blue**

S 36/38" M 38/40" L 42/44" XL 44/46"
2XL 48/50" 3XL 52/54"

***Buy 1 for £26 EACH or Buy 2 for £24 EACH!**

FROM

£24*

BUY
2

SAVE
£4

Mix & Match



NAVY

BLUE

**PYJAMA
SIZES**
**UP TO
3XL**

NAVY

Cool & Lightweight



Big Summer
SALE

AVAILABLE IN
NAVY OR BLUE

Call to order **0303 031 0310**

MIX & MATCH ON NIGHTWEAR ESSENTIALS

1. Cambridge Pyjamas - JG53

Pure brushed cotton. Button full opening jacket for easy dressing. Chest pocket. Trousers have an elasticated waistband with adjuster. 100% Brushed Cotton.

Colours: **Navy & Red**

M 38/40" L 42/44" XL 44/46" 2XL 48/50" 3XL 52/54"

***Buy 1 for £33 EACH or**

Buy 2 for £30 EACH!



RED



NAVY

FROM
£30*

BUY
2

SAVE
£6



①

100% Cotton

Mix & Match

Shawl
Collar



②

2. Knightsbridge Dressing Gown - JG51

Wear this soft touch fleece dressing gown for lazy evenings around the house. Ideal for the chilly weather, the dressing gown offers tie fastening, twin pockets and a hanging hook. 100% Polyester.

Colour: **Navy**

Sizes: M 38/40" L 42/44"

XL 46" 2XL 48"

***Buy 1 for £33 EACH or
Buy 2 for £30 EACH!**

FROM
£30*

BUY
2

SAVE
£6



ANY 2 PYJAMA SETS FROM £30 EACH!

1. Cambridge Pyjama Bottoms (2Pk) - JG54

Pyjama bottoms with a comfortable elasticated waistband, two button adjuster and button fly. Lightweight and soft, perfect for a great nights sleep. 100% Brushed Cotton.

Colour: **Blue**

Sizes: M 38/40" L 42/44"
XL 46" 2XL 48" 3XL 50/52"

***Buy 1 for £33 EACH or
Buy 2 for £30 EACH!**

FROM
£30*

BUY
2

SAVE
£6



BLUE

**2
PACK**



①

Mix & Match



②

2. Kingston Stripe Pyjama Bottoms (2Pk) - JG31

Stay comfortable all night long in these pyjama bottoms with two in a pack. Button fastening, regular fit with fully elasticated waist for extra room and comfort during the night. 100% Cotton.

Colour: **Navy**

M 38/40" L 42/44" XL 44/46"
2XL 48/50" 3XL 52/54"

***Buy 1 for £33 EACH or
Buy 2 for £30 EACH!**

FROM
£30*

BUY
2

SAVE
£6



NAVY

**2
PACK**

Call to order **0303 031 0310**

55

Online **www.jolliman.co.uk**

MEN'S UNDERWEAR

£12



3 FOR £25

BUY
3

SAVE
£11

Cotton Trunks - JH41

100% Soft Combed Cotton.
Colour: **White** Size: Medium - 5XL
£12 EACH - 3 FOR £25

£12



3 FOR £25

BUY
3

SAVE
£11

Cotton Briefs - JH40

100% Soft Combed Cotton.
Colour: **White** Size: Small - 5XL
£12 EACH - 3 FOR £25

£12

**3
PACK**



2 FOR £20

BUY
2

SAVE
£4

Yarn Dyed Boxer Shorts - JH43

65% Cotton | 35% Polyester.
Size: Small - 5XL Colours may vary.
£12 EACH - 2 FOR £20

£12



3 FOR £25

BUY
3

SAVE
£11

Sleeveless Vest - JH39

100% Soft Combed Cotton. Colour:
White Size: Medium - 5XL
£12 EACH - 3 FOR £25

**WAIST
SIZES**

	S	M	L	XL	2XL	3XL	4XL
INCH	30-32	33-35	36-39	40-42	43-45	46-48	49-51
CM	76-81	84-89	91-99	102-107	109-114	117-122	124-130

**CHEST
SIZES**

	S	M	L	XL	2XL	3XL	4XL
INCH	34-36	37-39	40-42	43-45	46-47	48-50	52-54
CM	86-91	94-99	102-107	109-114	117-119	122-127	132-137

Call to order **0303 031 0310**

56

Online www.jolliman.co.uk

SOCKS COLLECTION

Lamb Wool Lycra Socks - JI321

55% Acrylic, 25% Wool,
18% Polyester 2% Elastane Lycra
Size: 6-11

£10

3 PAIRS



CALF
LENGTH

Knee Length Lamb Wool Lycra Socks - JI322

55% Acrylic, 25% Wool
18% Polyester 2% Elastane Lycra
Size: 6-11

£12

3 PAIRS



KNEE
LENGTH

Gentle Grip Black Socks - JI290

Cotton rich
men's plain black
socks. Perfect for
everyday wear.
Size: 6-11 or 12-14

£8

3 PAIRS



CALF
LENGTH

Cotton Knee High Socks JI325

100% Cotton.
Size: 6-11.

£10

3 PAIRS



KNEE
LENGTH

Calf Length Blue Socks JI307

Various Blue
Size: 6 to 11 or 12-14

£10

3 PAIRS



CALF
LENGTH

Argyle Pattern Socks - JI248

Colours:
Blue & Grey
Size: 6-11.

£8

3 PAIRS



CALF
LENGTH

DIABETIC SOCKS

£10

1 PAIR



Diabetic Socks - JI109

Comfort fit specially designed for diabetics.
Approved by the Institute of Chiropodists &
Podiatrists 94% Cotton. 6% Elastane.

Colours: **Black & Oatmeal**
Size: 6 to 11 or 12-14

£10

3 PAIRS

**EXTRA
WIDE**



Extra Wide Diabetic Socks - JI323

Extra wide 3 pack of diabetic socks. Non
binding, stays up and comfort fit with
hand linked toe seam.

Colours: **Coffee, Beige & Brown**
Size: 6 to 11.

GREAT PRICES ON MEN'S WATCHES

Easy Read

£34.⁹⁹

BEST PRICE

TAN



BLACK

50M
WATER
RESISTANT

Limit Pilots Watch with Black Face, Day & Date Display - J1344

Features a round alloy case a black dial with an outer minute track and a day/date display. The watch fastens with a comfortable coloured PU strap. **Dial: W43mm - Strap: W22mm.**

Easy Read

£19.⁹⁹

BEST PRICE

BLUE



BLACK



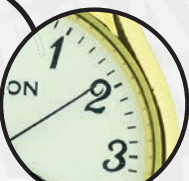
BROWN

Bravesoul Quartz Strap Watch - JT671

Quartz Strap Watch combines style and reliability with black, brown, or blue straps and a contrast stitch design. Luminous hands and dial index ensure easy reading, backed by a 12-month guarantee for peace of mind.

£19.⁹⁹

BEST PRICE



Easy Read

Gents Citron Quartz Analogue Easy Read Dial Design Watch - JT672

Our latest timepiece offers white or champagne easy-read figure dials and a padded strap for comfort. Backed by a 12-month guarantee, it promises both style and reliability.

Easy Read

£19.⁹⁹

BEST PRICE

BROWN



BLACK

Gents Citron Quartz Analogue Strap Watch - JT673

Featuring easy-to-read white or champagne Roman Numeral dials and a padded strap for enhanced comfort. With a 12-month guarantee, it ensures both style and reliability.

MEN'S ACCESSORIES AT LOW PRICES

£12

• BEST PRICE



Camo Bucket Hat - JT615

Cotton Bucket Hat.

Size: 58cm

Sun Bucket Hat - JT633

Polyester Reversible Bucket Hat.

Size: 58cm

£10

• BEST PRICE



Lightweight Baseball Cap - JT667

Tailor your comfort with this lightweight, adjustable design baseball cap. 100% Cotton.

Colours: **Black & Stone**

One Size

£14



2 FOR £20 - SAVE £8

Aviator Half Rim Style Sunglasses - JT668

UV400 PROTECTION,

Category 3 dark lenses for bright days.

Colours: **Blue, Tan & Brown**

WAS £30

£25

• SAVE 16%



**FREE REUSABLE
TRAVEL TUBE**

Panama Style Hat - JJ30

Made from natural fibres. Folds for easy packing and storage.

Colours: **Stone**

Size (circumference):

S 57cm - M 58cm -

L 59cm - XL 60cm

£15

• BEST PRICE



Dean Bakerboy Cap - JI336

Men's eight panel bakerboy hat.

Colour: **Green Multi Check**

Sizes: 58cm or 60cm

£10



2 FOR £15 - SAVE £5

Handkerchiefs - JI276

Pack of 10 Handkerchiefs. Crafted from premium 100% cotton, these timeless accessories offer durability and softness in equal measure. (Colours May Vary)

£14



2 FOR £20 - SAVE £8

Aviator Full Rim Style Sunglasses - JT670

UV400 PROTECTION,

Category 3 dark lenses for bright days.

Colours: **Silver, Black & Brown**

£9

• BEST PRICE



Black Rectangular Frame Sunglasses - JT669

UV400 PROTECTION,

Category 3

dark lenses for bright days.

Colours: **Black**

One Size

MEN'S TROUSER BRACES

Made of high-quality polyester, elastic fibre, and solid metal clips.

These braces feature a classic design that is soft to the touch and comfortable to wear, making them a necessary accessory for any gentleman.

Spotted Braces - JI266

£10

ONE
SIZE



BURGUNDY

Plain Braces - JI266

£10

ONE
SIZE



NAVY

Combination Braces - JI349

£10

ONE
SIZE



TARTAN

Use with or without brace buttons



BLACK



NAVY



BURGUNDY



BLACK

MEN'S BELTS ONLY £8 EACH

£8



Classic Belt - JI215

Synthetic leather look with leather backing.

Colours: **Black & Brown**

M 34/36" L 38/40"

XL 42/44" 2XL 46/48"

3XL 50/52" 4XL 54/56" 5XL 58"

£8



1 1/2" Wide Belt - JI219

Perfect with jeans and casual trouser. Synthetic leather look with leather backing.

Colours: **Black & Brown**

M 34/36" L 38/40" XL 42/44"

2XL 46/48" 3XL 50/52"

4XL 54/56" 5XL 58"

£8



STRETCH
FABRIC

Woven Stretch Belt - JI273

Stylish and comfortable, made with stretchy elastic fabric and high-quality PU leather loop and belt end. The attractive heavy buckle design makes you stand out.

Colour: **Navy & Black**

Waist: 30 - 44" or 46 - 52"

SLIPPER COLLECTION



£24

• GREAT VALUE

Suede Moccasin Slippers - JL06

Lovely suede moccasins with a cosy fabric lining, rubber sole & suede uppers.

Colours: **Brown, Blue & Sand**

Size: 6, 7, 8, 9, 10, 11, 12



£30

• BEST PRICE

Harlequin Slipper - JD267

Multi velour slipper.

Vulcanised rubber sole.

Colours: **One Colour**

Size: 6, 7, 8, 9, 10, 11, 12, 13



£22

• BEST PRICE

Velour Touch Fastening

Slipper - JL137 Navy blue Velour.

Touch fastening slipper Textile covered injected PVC sole.

Colours: **Navy** Size: 6, 7, 8, 9, 10, 11, 12



£16

• GREAT DEAL

Luxury Full Slippers Navy Check - JL147

Men's cosy full slippers. Checked upper design.

Two tone style twin gussets. Suitable for outdoors.

Colours: **Check Navy**

Size: 6, 7, 8, 9, 10, 11, 12

GREAT PRICES ON MEN'S SLIPPERS

£25

• BEST PRICE



WIDE
Fitting

Multi Touch Fasten Comfort Slippers - JL140

Superwide fitting. Memory foam sock. Textile sided & stitched sole.

Colour: **Black**

Size: 6, 7, 8, 9, 10, 11, 12



MEMORY
FOAM

£23

• GREAT VALUE



Dunlop Real Suede Slippers - JL155

Cognac real suede mule slipper. Faux fur lining. Textile covered PVC sole.

Colours: **Tan & Black**

Size: 6, 7, 8, 9, 10, 11, 12

FELT
LINING

£16

• GREAT DEAL



Velour Slippers - JL02

Elastic twin gusset. PVC sole. Velour upper, felt lined & PVC textile.

Colours: **Navy & Black**

Size: 6, 7, 8, 9, 10, 11, 12, 13, 14

FELT
LINING

£23

• BEST PRICE



Check Velour Slippers

Brown - JD268 Navy - JD368

Check velour twin gusset slipper. Textile covered injected PVC sole.

Colours: **Brown & Navy**

Size: 7, 8, 9, 10, 11, 12, 13, 14

VELOUR
MATERIAL

SLIPPER COLLECTION



£16

• BEST PRICE

Navy Herringbone Textile Twin Gusset Slipper - JL167

Herringbone gusset slipper. Elastic gusset. Textile covered TPR sole.

Colour: **Navy**

Size: 6, 7, 8, 9, 10, 11, 12

FELT
LINING



£22

• GREAT DEAL

Navy Check Velour Slip On Slipper - JL160

Navy check velour. Twin gusset. Memory foam sock textile lining. Textile covered sole. Colour: **Navy**

Size: 6, 7, 8, 9, 10, 11, 12, 13, 14



MEMORY
FOAM



£22

• GREAT VALUE

Brown Tweed Textile Moccasin Style Slipper - JL166

Moccasin style slipper with terry lining & sock. Textile covered TPR sole.

Colour: **Brown**

Size: 6, 7, 8, 9, 10, 11, 12

TERRY
LINING



£30

• BEST PRICE



WIDE
Fitting

Navy Nylon Superwide Touch Fastening Slipper - JL165

SUPERWIDE Fitting. Washable vulcanised rubber sole. Colour: **Navy**

Size: 6, 7, 8, 9, 10, 11, 12, 13



TOUCH
FASTENING

REDUCTIONS ON SUMMER SANDALS

WAS £40

£37

SAVE 7%



BEIGE

NAVY

Dual Touch Fastening Sports Sandal - JD263

Triple Touch Fastening. Crafted for durability and breath-ability, these sandals offer a secure fit with triple touch fastening. The neoprene lining enhances comfort, while the Phylon/Rubber sole provides traction and flexibility for any adventure.

Colours: **Beige & Navy**

Size: 6, 7, 8, 9, 10, 11, 12



**SUPER
LIGHTWEIGHT**



**TOUCH
FASTENING**

£29

BEST PRICE



GREY

BROWN

Touch Fastening Sports Sandal - JD172

Designed to provide optimal comfort and functionality for your active lifestyle. This sports sandal features an adjustable touch fastening heel strap, allowing you to customise the fit according to your preference and ensuring a secure and snug feel with every step. The PVC sole offers durability and traction, making it suitable for various outdoor activities and terrains.

Colours: **Brown & Grey**

Size: 6, 7, 8, 9, 10, 11, 12



**SUPER
LIGHTWEIGHT**



**TOUCH
FASTENING**

REDUCTIONS ON SUMMER SANDALS

BROWN

Mule Toe Post Sandal - JD173

Designed as a toe post flip flop mule sandal, it combines effortless elegance with practicality. The rich brown PU material not only lends a sophisticated touch but also ensures durability and resilience to everyday wear.

The EVA/TPR sole, offering cushioned support and reliable traction for all-day wear.

Colours: **Brown**

Size: 6, 7, 8, 9, 10, 11, 12



WAS £23

£21

• SAVE 8%

WAS £15

£14

• SAVE 6%

BLUE

Padded Easi-Fasten Sandal - JD183

A versatile choice for beach days or casual outings. With touch fastening for easy adjustment and a padded design for comfort, it's perfect for all-day wear. The EVA sole ensures lightweight cushioning and traction on any surface.

Colours: **Black & Blue** Size: 6, 7, 8, 9, 10, 11, 12

WAS £21

£19

• SAVE 9%



Open Toe Sandal - JD157

A chic crossover mule design crafted for both style and durability. Featuring a sophisticated brown hue and an EVA/TPR sole, it's perfect for any occasion, offering comfort and traction with every step.

Colour: **Brown**

Size: 6, 7, 8, 9, 10, 11, 12

IMAC® SANDALS COLLECTION



Crossover Mule Sandal - JD247

These crossover mule sandals boast durable waxy leather and a cosy textile lining. A padded suede sock adds luxury and cushioning for all-day comfort. Finished with a lightweight PU sole, they offer support and style to elevate your ensemble.

Colours: **Brown**

Size: 6, 7, 8, 9, 10, 11, 12



BROWN



**SHOCK
ABSORBER
IMPACT SOLE**

£55

• GREAT DEAL



£60

• GREAT VALUE



£45

• BEST PRICE



Leather Deluxe Sports Sandal - JD248

These extra wide fit smart black leather shoes are designed for comfort and style. They feature a soft leather lining that gently wraps around your feet.

The cushioned insole offers added support and comfort with every step. Colours: **Brown**

Size: 7, 8, 9, 10, 11, 12

Leather Touch Fastening Sandal - JD302

These brown leather sandals feature touch fastening at the back for convenience. Enjoy the luxurious feel of the padded suede sock and the comfort of the soft textile lining. Finished with a lightweight PU sole, they offer effortless support for any occasion.

Colour: **Brown** Size: 6, 7, 8, 9, 10, 11, 12

FORMAL COLLECTION



NAVY/WINE



DARK BROWN



LIGHT BROWN



NAVY/BROWN

£58

• BEST PRICE

Moccasin Leather Boat Shoes - JD250

Lightweight moccasin boat shoes with a slip-on design and cushioned insole for all-day comfort. Featuring a hard-wearing flexible outsole with moulded grip and moccasin hand stitching.

Colours: **Brown, Navy/Wine, Brown Leather & Navy**

Size: 6, 7, 8, 9, 10, 11, 12



BLACK

£40

• GREAT VALUE

Smart Slip On Loafers - JD251

Centre gusset loafer. Textile lining. PU padded sock.

TPR sole. Colours: **Black & Brown**

Size: 6, 7, 8, 9, 10, 11, 12



BLACK

£38

• BEST PRICE

Easi-Fasten

Smart Casual Shoe - JD61

Easy-clean leather look uppers & leather lining. Touch fastening for width adjustment. PU sole. Colours: **Black & Brown**

Size: 6, 7, 8, 9, 10, 11, 12



TOUCH FASTENING



£27

• BEST PRICE

Slip On Casual Shoe - JD135

Casual slip on shoe with rugged grip sole looks great either casual or smart.

Man-made upper and sole.

Colour: **Black** Size: 6, 7, 8, 9, 10, 11, 12



RUGGED GRIP SOLE



£27

• GREAT DEAL

Lace Up Casual Shoe - JD136

Apron 4 eye tie shoe, man-made upper, natural man-made/textile lining, PU sole.

Colour: **Black**

Size: 6, 7, 8, 9, 10, 11, 12



RUGGED GRIP SOLE

LEISURE COLLECTION

£55

• GREAT DEAL



NAVY

BEIGE

Superlight Lace Up Leisure Shoe - JD283

This 3-yelet leisure shoe features a comfortable leather sock and a super lightweight TPR/Phylon sole for optimal support and durability. The shoe also has a stylish striped textile lining. Perfect for any outdoor activities or leisure time.

Colours: **Beige & Navy**

Size: 6, 7, 8, 9, 10, 11, 12



£29

• BEST PRICE



Twin Gusset Casual Slip On Canvas Shoe - JD298

Denim canvas twin gusset slip on casual textile sock & lining PU sole.

Colours: **Blue & Grey** Size: 6, 7, 8, 9, 10, 11, 12



NAVY



Touch Fastening Comfort Sole Shoe - JD170

Synthetic Nubuck. Touch fastening. Textile/mesh lining. PU sock. TPR sole.

Colours: **Navy & Tan** Size: 6, 7, 8, 9, 10, 11, 12

£37

• BEST PRICE



NAVY

Cushion Comfort Sole Slip On - JD166

Twin gusset casual, textile/mesh lining PU sock, TPR sole. Colours: **Grey & Tan**

Size: 6, 7, 8, 9, 10, 11, 12

SAVE UP TO 16% ON LEISURE SHOES



WAS £33
£30
• SAVE 9%

Navy Memory Foam Comfort Leisure Shoe - JD275

Lightweight twin gusset. Textile lining. Memory foam comfort sock. Lightweight EVA sole. Colours: **Navy** Size: 6, 7, 8, 9, 10, 11, 12



BLUE



£45
• BEST PRICE

Memory Foam Leisure Shoe - JD265

Apron 3 eye tie shoe. Textile lining. Comfort memory foam sock. TPR sole. Colours: **Navy & Brown** Size: 6, 7, 8, 9, 10, 11, 12



WAS £24
£20
• SAVE 16%

Touch Fastening Deck Shoe - JD62

Touch fastening. Padded upper. Check textile lining. Textile covered injected PVC sole. Colour: **Navy** Size: 6, 7, 8, 9, 10, 11, 12

PADDED UPPER



WAS £24
£20
• SAVE 16%

Navy Denim Canvas Twin Gusset Slip On - JD165

Padded upper. Check textile lining. Textile covered injected PVC sole. Colours: **Navy** Size: 6, 7, 8, 9, 10, 11, 12



TAUPE



Suede Comfort Slip On Shoe - JD169

Crafted from real suede, this slip-on features a twin gusset design for easy wear. The TPR sole provides reliable traction, whether you're running errands or enjoying leisurely strolls, these slip-ons offer both versatility and comfort for any occasion.

Colours: **Taupe & Black** Size: 6, 7, 8, 9, 10, 11, 12

BLACK



£38

• BEST PRICE



LEISURE COLLECTION

£29

• GREAT VALUE

TAN

Moccasin Boat Shoe - JD299

Fashioned from a blend of synthetic nubuck and PU, these moccasin boat shoes seamlessly combine style and resilience. Engineered with a blown PU sole, they promise lightweight comfort and steadfast support for long days spent on deck or on shore.

Colours: **Navy & Tan**

Size: 6, 7, 8, 9, 10, 11, 12



**SUPER
LIGHTWEIGHT**

NAVY

£45

• BEST PRICE



BLUE

Two Tone Lace up Leisure Trainer - JD301

Step into style and comfort with these 6-eye, 2-tone leisure trainers. With a cosy textile lining, they ensure a soft feel with every stride. The TPR sole offers durability and stability, perfect for all your daily adventures.

Colours: **Brown & Navy**

Size: 6, 7, 8, 9, 10, 11, 12

£45

• GREAT DEAL



**SUPER
LIGHTWEIGHT**

Premium Lace Up Leisure Shoe - JD300

These 6 eye lace leisure shoes offer a blend of style and comfort. Featuring a textile lining and sock, they provide a soft and cosy feel with every step. The TPR sole ensures durability and stability, making them perfect for all-day wear.

Colour: **Brown**

Size: 6, 7, 8, 9, 10, 11, 12

HUSH PUPPIES COLLECTION



Hush Puppies®

Hush Puppies, established in 1958, is a world-famous brand that makes worry-free shoes. With a presence in over 136 countries, they bring comfort and style to people everywhere, while maintaining a light-hearted, fun-loving vibe.

Life's too short for uncomfortable shoes!



TAN

£70

• GREAT VALUE



BLACK



SUPER
LIGHTWEIGHT



GENUINE
LEATHER



MEMORY
FOAM

Eamon Slip On Shoe - JD292

Padded collar for extra comfort. Cushion comfort insole. Leather sock. Breathable textile lining. Lightweight and flexible PU sole.
Colour: **Black & Tan** Size: 6, 7, 8, 9, 10, 11, 12



BLACK

£70

• BEST PRICE

Hush Puppies®



TOUCH
FASTENING



MEMORY
FOAM

Casper Velcro Touch Fastening Shoe - JD290

Breathable textile lining. Memory foam comfort insole. Hard-wearing rubber sole unit

Colours: **Black**

Size: 6, 7, 8, 9, 10, 11, 12



BLACK

NAVY

£70

• GREAT DEAL

Hush Puppies®



MEMORY
FOAM



HARDWEAR
SOLE

Jasper Slip On Shoe - JD291

Hard-wearing sole. Memory foam comfort insole. Padded collar for extra comfort. Breathable textile lining. Colour: **Black & Navy**

Size: 6, 7, 8, 9, 10, 11, 12

Touch Fastening Tramline Casual Shoe - JD296

Extra wide touch fastening. Leather quarter lining & sock. Super lightweight. Deep toe box. PU sole. Colours: **Black**
Size: 7, 8, 9, 10, 11, 12

£58

• BEST PRICE



Wide-fit Touch Fasten Shoe - JD212

Extra-wide fit black leather shoes. Featuring elasticated front, soft leather lining and cushioned insole. the perfect blend of elegance and support for prolonged wear. Colours: **Black**
Size: 6, 7, 8, 9, 10, 11, 12,

£58

• GREAT VALUE



WIDE

Fitting



£58

• GREAT DEAL



£58

• BEST PRICE

Extra Wide Lace Up Shoe - JD223

Extra wide 4 eye lace to toe. Leather/textile lining. Leather sock. 3-in-1 fitting system with PU sole. Colours: **Black** Size: 7, 8, 9, 10, 11, 12

Comfort Leather Shoe - JD294

Waterproof membrane. Fuller fitting Super lightweight. Textile lining & leather sock. PU sole. Colours: **Black** Size: 6, 7, 8, 9, 10, 11, 12,

WAS £65
£60

• SAVE £5

BROWN

WIDE
Fitting

**Softie Touch Fastening
 Casual Shoe - JD295**

Extra wide touch fastening.
 Leather quarter lining & sock.
 Super lightweight. Deep toe
 box. 2 removable insoles.
 Ideal for Orthotics. PU air
 system sole.

Colour: **Black & Brown**

Size: 6, 7, 8, 9, 10, 11,
 12, 13, 14, 15

**3-IN-1
 FITTING**


**SUPER
 LIGHTWEIGHT**


**100%
 GENUINE
 LEATHER**


**TOUCH
 FASTENING**



BLACK

roamers

WIDE-FIT COLLECTION

WIDE
Fitting

**Superlight Touch
 Fasten Shoe - JD143**

Extra wide fitting soft leather,
 lightweight touch fastening.
 Leather upper and lining with
 polyurethane sole.

Colours: **Black & Brown**

Size: 6, 7, 8, 9, 10, 11, 12

BLACK

WAS £70
£62
• SAVE 11%


**SUPER
 LIGHTWEIGHT**


**100%
 GENUINE
 LEATHER**


**TOUCH
 FASTENING**



BROWN



Call to order **0303 031 0310**

73

Online **www.jolliman.co.uk**

WAS £70
£62
 • SAVE 11%

WIDE
Fitting

Superlight Lace Up Shoe - JD189

Extra wide fitting soft leather, lightweight lace up shoe. Leather upper and lining with polyurethane sole.

Colours: **Black & Brown**
 Size: 6, 7, 8, 9, 10, 11, 12

BLACK

BROWN


 SUPER
 LIGHTWEIGHT


 100%
 GENUINE
 LEATHER

roamers

WIDE-FIT COLLECTION

WIDE
Fitting

Slip On Shoe - JD154

Extra wide twin gusset casual, leather/textile lining & sock, 3 in 1 fitting system, 2 removable insoles, ideal for orthotics.

Colour: **Black & Tan**

Size: 6, 7, 8, 9, 10, 11, 12, 13, 14

TAN

BLACK

£60
 • BEST PRICE

**3-IN-1
 FITTING**


 100%
 GENUINE
 LEATHER

Call to order **0303 031 0310**

74

Online **www.jolliman.co.uk**

GREAT DEALS ON OUR TRAINER COLLECTION



BLACK

WHITE

Timeless Comfort Lightweight Trainer - JD286

This precision-crafted lightweight trainer offers style and versatility for your active lifestyle. The Timeless Comfort Lightwear Trainer is perfect for the gym, jogging, or a stroll around town.

Colours: **White & Black**

Size: 6, 7, 8, 9, 10, 11, 12, 13, 14, 15, 16

HI-TEC®

£56

• GREAT VALUE



£33

• GREAT VALUE

BLACK

Superlight Lace Up Sports Trainer - JD222

Mesh lace up trainers. Memory foam sock. Mesh textile lining. Phylon midsole inserts. Colours: **Black & Navy**

Size: 7, 8, 9, 10, 11, 12



£30

• BEST PRICE

BLUE

Memory Foam Superlight Trainer - JD288

Superlight 5 eye lace design. Memory foam sock. Textile lining. Lightweight phylon sole.

Colours: **Grey & Blue** Size: 6, 7, 8, 9, 10, 11



£30

• BEST PRICE

**CUSHIONED
HEEL**

Black Cushion Heel Trainers - JD249

Lace Up 7 eyelets. PU upper. Mesh lining. Textile insole. TPR rubber sole.

Colours: **Black**

Size: 6, 7, 8, 9, 10, 11, 12



£28

• GREAT DEAL

Twin Stripe Lace Trainer - JD297

PU twin stripe lace trainer with TPR sole.

Colours: **Navy & White**

Size: 6, 7, 8, 9, 10, 11, 12

WHITE

GREAT DEALS ON OUR TRAINER COLLECTION



£30

• GREAT DEAL

BLACK



SUPER
LIGHTWEIGHT

Comfort Lace Up Walking Trainer - JD271

PU/Textile Trainer. PVC sole.
Colours: **White/Navy & Black**
Size: 7, 8, 9, 10, 11, 12, 13



£30

• BEST PRICE



TOUCH
FASTENING



MEMORY
FOAM

Velcro Memory Foam Comfort Trainer - JD266

Textile lining. Comfort memory foam sock.
Lightweight phylon sole.
Colours: **Navy** Size: 6, 7, 8, 9, 10, 11, 12, 13



WAS £30

£28

• SAVE 6%

WHITE



TOUCH
FASTENING

Touch Fasten Trainer - JD142

Touch fastening velcro trainers
with PVC sole.
Colours: **Black & White**
Size: 6, 7, 8, 9, 10, 11, 12



£29

• GREAT VALUE

BLACK



100%
GENUINE
LEATHER

Lace Up Trainer - JD180

Leather, lace trainer textile lining &
sock. TPR sole.
Colours: **Black & White**
Size: 6, 7, 8, 9, 10, 11, 12

£45

• BEST PRICE

WHITE

BLACK

Touch Fastening Leather Trainer - JD285

Crafted from coated action
leather and PU, this trainer exudes
durability and style in equal
measure. Its non-marking TPR sole
ensures impeccable traction.

Colours: **Black & White**
Size: 6, 7, 8, 9, 10, 11, 12, 13, 14

100%
GENUINE
LEATHER

SAVE UP TO 16% ON OUTDOOR SHOES



WAS £32

£30

• **SAVE 6%**

Triple Fastening Trek Shoe - JD63

3 touch fastening adjustable comfort sandal. Super comfort deluxe padded suede sock with PU sole.

Colour: **Black, Grey & Brown**

Size: 6, 7, 8, 9, 10, 11, 12

HI-TEC®



GREY



RUGGED GRIP SOLE

£55

• **BEST PRICE**

Men's Jaguar Hi-Tec Trail Shoe - JD262

Breathable mesh upper and EVA midsole for cushioning and support, robust lugged outsole allows for grip on rough ground. Perfect for uneven terrains.

Colours: **Black & Grey** Size: 7, 8, 9, 10, 11, 12, 13



RUGGED GRIP SOLE



BLACK



GREY

WAS £35

£33

• **SAVE 5%**

Classic Lace Up Trek & Hiking Boot - JD174

Black synthetic nubuck/ textile 6 eyelet

mid trek & trail boot. Colours: **Black, Grey & Khaki**

Size: 6, 7, 8, 9, 10, 11, 12, 13, 14

WAS £21

£19

• **SAVE 9%**



Garden Shoe - JD26

100% Waterproof garden shoe are made from moulded PU. Deep cleated non-slip soles.

Colour: **Green**

Size: 6, 7, 8, 9, 10, 11, 12

FULL LENGTH



Dunlop Wellington - JD148

Full length Wellington with black PVC cleated sole.

Colours: **Green & Black**

Size: 4, 5, 6, 7, 8, 9, 10, 11, 12, 13

HALF LENGTH



Dunlop Half Wellington - JD213

Half length Wellington. Avg. 23cm

High Leg. Colours: **Green & Black**

Size: 4, 5, 6, 7, 8, 9, 10, 11, 12

WAS £25

£21

• **SAVE 16%**

£29

• **GREAT VALUE**

Contains 3 Suit/Shirt & 3 Dress Covers!

ONLY
£19.99

SET OF
6



JT609 - Breathable Clothes Covers (Set of 6).

The perfect solution for storing last season's clothes! Say goodbye to musty smells with these breathable cotton covers that keep garments fresh and pristine. Size H100cm x W60cm x D1cm.

Easy assembly no tools needed!

WAS £20

£12

SAVE 40%

*Stores up to
15 Pairs of shoes!*



JN820 - Metal Shoe Rack.

Made from durable, rust-resistant metal pipes and premium PP connectors, this open shoe rack is built to last. It keeps shoes ventilated and easy to find daily. Dimensions: L 63cm x W 19cm x H 67cm.

ONLY
£8.99



*Folds
Away!*

JN1031 - Fold Away Space Saving Laundry

Basket. Say hello to a clutter-free space. Experience the convenience of efficient storage without compromising on functionality. Size: H60cm x W35cm x D38cm.

ONLY
£14.99

SET OF
4



JT158 - Space Saving Hangers (2 Pack).

This set of 4 hanger holders supports up to 9 hangers, equivalent to 36 shirts (up to 5kg) without breaking. **Allows for horizontal or vertical positioning.**

ONLY
£19.99



JT220 - Clothes & Upholstery Lint Remover.

Efficient, portable lint remover with battery power for home or travel. Easy to use and compact for a polished appearance.

ONLY
£12.99

*Ergonomic Grip
for extended Use!*



JN357 - Belt Hole Puncher.

Makes holes in soft materials such as canvas, leather, soft plastics and textiles. Spring loaded punch head. Punch sizes: 2mm, 2.5mm, 3mm, 3.5mm, 4mm, 4.5mm.

Triple Action Stainless Steel Blades

JT236 - Experience a closer shave with the Omega Rotary Shaver.

This Rotary Shaver boasts stainless steel triple-action blades that provide a close shave, a floating rotary head that can be safely washed under the tap, and a pop-up trimmer for precision. Recharges with its mains charging adapter.

ONLY
£32.99

great
GIFT
IDEA!

**Safely wash
shaver head
under the tap!**

*Restore your favourite
electric shaver with...*

ONLY
£12.99

great
GIFT
IDEA!



JN114 - Ear & Nose Trimmer Kit.

Versatile grooming, effectively removing unwanted hair from the nose, ears, eyebrows, beard, and face. Powerful rotating micro-cut system. Compact and portable.

ONLY
£13.99



**Extend the life of
your rotary shaver!**

JT156 - Shaver Sharpeners. Save money with this convenient rotary shaver sharpener. Restores your shaver to original sharpness in seconds, without the need to buy expensive shaver heads.

ONLY
£14.99

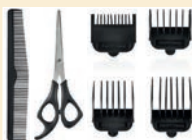
**2 Free
brush
heads**



JN784 - Rechargeable Electric Tooth Brush.

Advanced sonic technology, this electric toothbrush oscillates, rotates, and pulsates, effectively removing more plaque than traditional methods. Comes with 2 brush heads.

ONLY
£29.99



JN245 - 2-in-1 Beard & Hair Trimmer.

High-precision steel blade trimmer with 30-minute battery life. Compact and versatile for hair, beard, and detail trimming, perfect for travel. **Required: 2 X Aa Batteries (Not Included).**

*Sun Protection
with panache!*

*Folds Away for
Easy Storage!*

WAS £30
NOW
£25

• **SAVE 16%**

Panama Style Hat - JJ30

Sun Protection: Shield yourself from the harsh rays of the sun while exuding effortless elegance.

Devastatingly Stylish: Designed with impeccable taste, our Panama style hat adds a touch of sophistication to any outfit.

Easy Packing & Storage: Unlike traditional hats, our Panama style hat folds easily, making it a breeze to pack into your luggage or carry-on.

Reusable Travel Tube: Each hat is supplied folded in a reusable travel tube, ensuring convenient storage and protection when not in use. Plus, it's eco-friendly!

Colours: **Stone**

Size (circumference):

S 57cm - M 58cm - L 59cm - XL 60cm

*Free
Travel Tube
included!*

Jolliman
FAMILY RUN SINCE 1946



Order **Online** at
www.jolliman.co.uk



Order by **Phone**
0303 031 0310